

Product datasheet

Anti-Prolyl Endopeptidase antibody ab58988

★★★★★ [1 Abreviews](#) [18 References](#) [1 Image](#)

Overview

Product name	Anti-Prolyl Endopeptidase antibody
Description	Rabbit polyclonal to Prolyl Endopeptidase
Host species	Rabbit
Specificity	ab58988 does not recognize other Prolyl Endopeptidase family members.
Tested applications	Suitable for: WB
Species reactivity	Reacts with: Dog
Immunogen	Synthetic peptide based on the amino terminal end of human Prolyl Endopeptidase. (Peptide available as ab63973 .) Immunizing peptide available on request, please contact a customer service representative to ask for availability.
General notes	<p>The Life Science industry has been in the grips of a reproducibility crisis for a number of years. Abcam is leading the way in addressing this with our range of recombinant monoclonal antibodies and knockout edited cell lines for gold-standard validation. Please check that this product meets your needs before purchasing.</p> <p>If you have any questions, special requirements or concerns, please send us an inquiry and/or contact our Support team ahead of purchase. Recommended alternatives for this product can be found below, along with publications, customer reviews and Q&As</p>

Properties

Form	Liquid
Storage instructions	Shipped at 4°C. Store at -20°C. Stable for 12 months at -20°C.
Storage buffer	pH: 7.40 Preservative: 0.05% Sodium azide Constituents: PBS, 50% Glycerol, 2.9% Sodium chloride
Purity	Immunogen affinity purified
Clonality	Polyclonal
Isotype	IgG

Applications

The Abpromise guarantee

Our **Abpromise guarantee** covers the use of ab58988 in the following tested applications.

The application notes include recommended starting dilutions; optimal dilutions/concentrations should be determined by the end user.

Application	Abreviews	Notes
WB		

Application notes

WB: 1/1000 - 1/5000 dependent on substrate. Predicted molecular weight: 81 kDa.

A recommended starting concentration for Western blots is 1:1,000 when using colorimetric substrates such as BCIP/NBT, and 1:5,000 for chemiluminescent substrates.

EDTA/EGTA treatment of tissues or lysates is required to see latent zymogen.

Not yet tested in other applications.

Optimal dilutions/concentrations should be determined by the end user.

Target

Function

Cleaves peptide bonds on the C-terminal side of prolyl residues within peptides that are up to approximately 30 amino acids long.

Sequence similarities

Belongs to the peptidase S9A family.

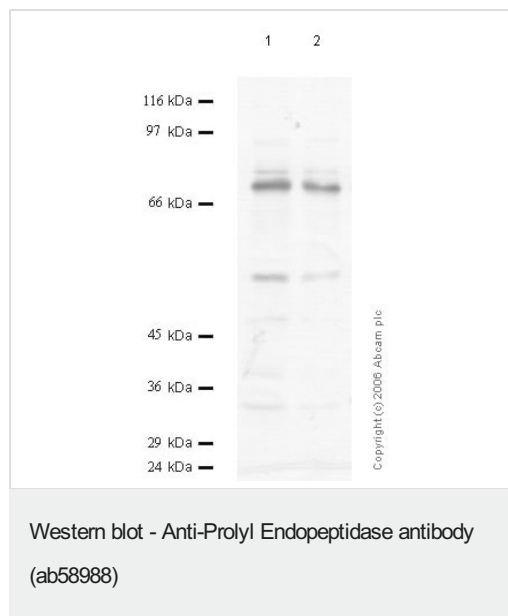
Post-translational modifications

The N-terminus is blocked.

Cellular localization

Cytoplasm.

Images



All lanes : Anti-Prolyl Endopeptidase antibody (ab58988) at 1/1000 dilution

Lane 1 : Madin Darby canine kidney (MDCK) cell lysate at 10 μ l

Lane 2 : Madin Darby canine kidney (MDCK) cell lysate at 5 μ l

Predicted band size: 81 kDa

Please note: All products are "FOR RESEARCH USE ONLY. NOT FOR USE IN DIAGNOSTIC PROCEDURES"

Our Abpromise to you: Quality guaranteed and expert technical support

- Replacement or refund for products not performing as stated on the datasheet
- Valid for 12 months from date of delivery
- Response to your inquiry within 24 hours

- We provide support in Chinese, English, French, German, Japanese and Spanish
- Extensive multi-media technical resources to help you
- We investigate all quality concerns to ensure our products perform to the highest standards

If the product does not perform as described on this datasheet, we will offer a refund or replacement. For full details of the Abpromise, please visit <https://www.abcam.com/abpromise> or contact our technical team.

Terms and conditions

- Guarantee only valid for products bought direct from Abcam or one of our authorized distributors