

Anti-Prominin 2 antibody ab118492

[1 References](#) [2 Images](#)

Overview

Product name	Anti-Prominin 2 antibody
Description	Rabbit polyclonal to Prominin 2
Host species	Rabbit
Tested applications	Suitable for: IHC-P
Species reactivity	Reacts with: Human
Immunogen	Synthetic peptide conjugated to KLH, corresponding to N terminal amino acids of Human Prominin 2 (NP_653308.2).
Positive control	Human Lung (Respiratory Epithelium) and Uterus tissues.
General notes	<p>The Life Science industry has been in the grips of a reproducibility crisis for a number of years. Abcam is leading the way in addressing this with our range of recombinant monoclonal antibodies and knockout edited cell lines for gold-standard validation. Please check that this product meets your needs before purchasing.</p> <p>If you have any questions, special requirements or concerns, please send us an inquiry and/or contact our Support team ahead of purchase. Recommended alternatives for this product can be found below, along with publications, customer reviews and Q&As</p>

Properties

Form	Liquid
Storage instructions	Shipped at 4°C. Upon delivery aliquot and store at -20°C. Avoid freeze / thaw cycles.
Storage buffer	<p>pH: 7.4</p> <p>Preservative: 0.1% Sodium azide</p> <p>Constituent: 99% PBS</p>
Purity	Protein A purified
Clonality	Polyclonal
Isotype	IgG

Applications

The Abpromise guarantee Our **Abpromise guarantee** covers the use of ab118492 in the following tested applications.

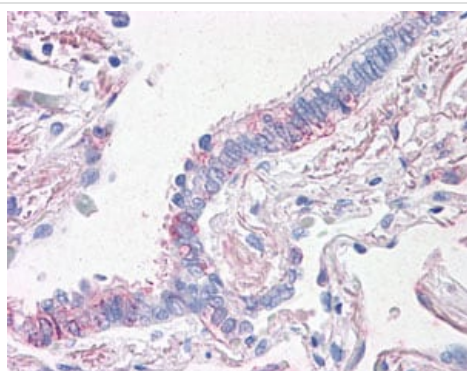
The application notes include recommended starting dilutions; optimal dilutions/concentrations should be determined by the end user.

Application	Abreviews	Notes
IHC-P		Use a concentration of 15 - 20 µg/ml.

Target

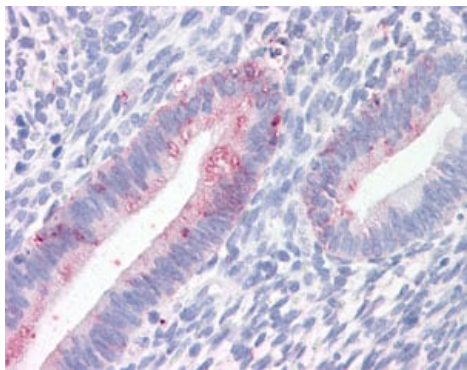
Tissue specificity	Present in saliva within small membrane particles (at protein level). Expressed in kidney, prostate, trachea, esophagus, salivary gland, thyroid gland, mammary gland adrenal gland, placenta, stomach, spinal cord and liver. In submucosal tumor, expressed in spindle-shaped or stellate stromal cells. Expressed in prostate cancer cell lines.
Sequence similarities	Belongs to the prominin family.
Post-translational modifications	Glycosylated.
Cellular localization	Apical cell membrane. Basolateral cell membrane. Cell projection > microvillus membrane. Cell projection > cilium membrane. Colocalizes with PROM1. Associates with membrane in a cholesterol-dependent manner. Localizes to the apical and basolateral membranes of epithelial cells.

Images



ab118492 at 0.5 µg/ml staining Prominin 2 in Human Lung, Respiratory Epithelium by Immunohistochemistry Formalin-fixed, Paraffin-embedded tissue.

Immunohistochemistry (Formalin/PFA-fixed paraffin-embedded sections) - Anti-Prominin 2 antibody (ab118492)



ab118492 at 0.5 µg/ml staining Prominin 2 in Human Uterus by Immunohistochemistry Formalin-fixed, Paraffin-embedded tissue.

Immunohistochemistry (Formalin/PFA-fixed paraffin-embedded sections) - Anti-Prominin 2 antibody (ab118492)

Please note: All products are "FOR RESEARCH USE ONLY. NOT FOR USE IN DIAGNOSTIC PROCEDURES"

Our Abpromise to you: Quality guaranteed and expert technical support

- Replacement or refund for products not performing as stated on the datasheet
- Valid for 12 months from date of delivery
- Response to your inquiry within 24 hours
- We provide support in Chinese, English, French, German, Japanese and Spanish
- Extensive multi-media technical resources to help you
- We investigate all quality concerns to ensure our products perform to the highest standards

If the product does not perform as described on this datasheet, we will offer a refund or replacement. For full details of the Abpromise, please visit <https://www.abcam.com/abpromise> or contact our technical team.

Terms and conditions

- Guarantee only valid for products bought direct from Abcam or one of our authorized distributors