

Product datasheet

Anti-Prostacyclin receptor antibody [EPR16518] ab196653

Recombinant RabMAb

4 Images

Overview

Product name	Anti-Prostacyclin receptor antibody [EPR16518]
Description	Rabbit monoclonal [EPR16518] to Prostacyclin receptor
Host species	Rabbit
Tested applications	Suitable for: Flow Cyt (Intra), WB, IHC-P
Species reactivity	Reacts with: Human
Immunogen	Recombinant fragment. This information is proprietary to Abcam and/or its suppliers.
Positive control	HepG2 whole cell lysate (ab7900); Human fetal kidney lysate; Human endometrium tissue; HepG2 cells.
General notes	<p>This product is a recombinant monoclonal antibody, which offers several advantages including:</p> <ul style="list-style-type: none"> - High batch-to-batch consistency and reproducibility - Improved sensitivity and specificity - Long-term security of supply - Animal-free production <p>For more information see here.</p> <p>Our RabMAb[®] technology is a patented hybridoma-based technology for making rabbit monoclonal antibodies. For details on our patents, please refer to RabMAb[®] patents.</p>

Properties

Form	Liquid
Storage instructions	Shipped at 4°C. Store at +4°C short term (1-2 weeks). Upon delivery aliquot. Store at -20°C long term. Avoid freeze / thaw cycle.
Storage buffer	<p>pH: 7.2</p> <p>Preservative: 0.01% Sodium azide</p> <p>Constituents: 59% PBS, 40% Glycerol (glycerin, glycerine), 0.05% BSA</p>
Purity	Protein A purified
Clonality	Monoclonal
Clone number	EPR16518

Applications

The Abpromise guarantee

Our **Abpromise guarantee** covers the use of ab196653 in the following tested applications.

The application notes include recommended starting dilutions; optimal dilutions/concentrations should be determined by the end user.

Application	Abreviews	Notes
Flow Cyt (Intra)		1/120. ab172730 - Rabbit monoclonal IgG, is suitable for use as an isotype control with this antibody.
WB		1/1000. Detects a band of approximately 40 kDa (predicted molecular weight: 41 kDa).
IHC-P		1/100 - 1/250. Perform heat mediated antigen retrieval with Tris/EDTA buffer pH 9.0 before commencing with IHC staining protocol.

Target

Function

Receptor for prostacyclin (prostaglandin I₂ or PGI₂). The activity of this receptor is mediated by G(s) proteins which activate adenylate cyclase.

Sequence similarities

Belongs to the G-protein coupled receptor 1 family.

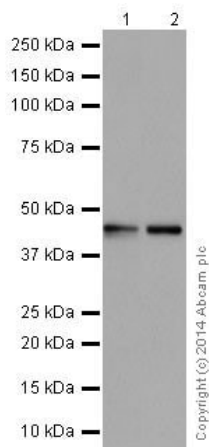
Post-translational modifications

Palmitoylation of either Cys-308 or Cys-311 is sufficient to maintain functional coupling to G(s) and signaling.
Isoprenylation does not influence ligand binding but is required for efficient coupling to the effectors adenylyl cyclase and phospholipase C.

Cellular localization

Cell membrane.

Images



Western blot - Anti-Prostacyclin receptor antibody [EPR16518] (ab196653)

All lanes : Anti-Prostacyclin receptor antibody [EPR16518] (ab196653) at 1/1000 dilution

Lane 1 : HepG2 (Human liver hepatocellular carcinoma) whole cell lysate

Lane 2 : Human fetal kidney lysate

Lysates/proteins at 20 µg per lane.

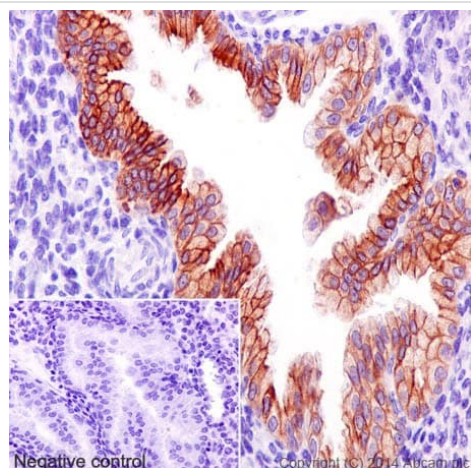
Secondary

All lanes : Goat Anti-Rabbit IgG, (H+L), Peroxidase conjugated at 1/1000 dilution

Predicted band size: 41 kDa

Observed band size: 40 kDa

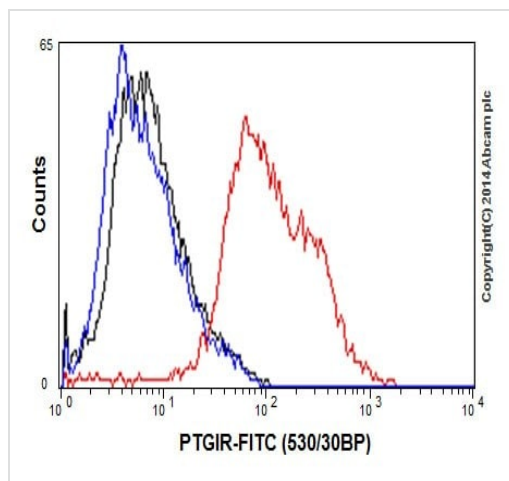
Blocking/Dilution buffer: 5% NFDM/TBST.



Immunohistochemistry (Formalin/PFA-fixed paraffin-embedded sections) - Anti-Prostacyclin receptor antibody [EPR16518] (ab196653)

Immunohistochemical analysis of paraffin-embedded Human endometrium tissue labeling Prostacyclin receptor with ab196653 at 1/250 dilution followed by Goat Anti-Rabbit IgG H&L (HRP) ([ab97051](#)) secondary antibody at 1/500 dilution. Cell membrane staining on Human endometrium is observed. Counter stained with Hematoxylin.





Perform heat mediated antigen retrieval with Tris/EDTA buffer pH 9.0 before commencing with IHC staining protocol.



Intracellular flow cytometric analysis of 2% paraformaldehyde-fixed HepG2 (Human liver hepatocellular carcinoma) cells labeling Prostacyclin receptor with ab196653 at 1/120 dilution (red) compared with a rabbit monoclonal IgG isotype control (black) and an unlabelled control (cells without incubation with primary antibody and secondary antibody; blue). Goat anti rabbit IgG (FITC) at 1/150 dilution was used as the secondary antibody.

Flow Cytometry (Intracellular) - Anti-Prostacyclin receptor antibody [EPR16518] (ab196653)

Why choose a recombinant antibody?

 <p>Research with confidence Consistent and reproducible results</p>	 <p>Long-term and scalable supply Recombinant technology</p>
 <p>Success from the first experiment Confirmed specificity</p>	 <p>Ethical standards compliant Animal-free production</p>

Anti-Prostacyclin receptor antibody [EPR16518] (ab196653)

Please note: All products are "FOR RESEARCH USE ONLY. NOT FOR USE IN DIAGNOSTIC PROCEDURES"

Our Abpromise to you: Quality guaranteed and expert technical support

- Replacement or refund for products not performing as stated on the datasheet

- Valid for 12 months from date of delivery
- Response to your inquiry within 24 hours
- We provide support in Chinese, English, French, German, Japanese and Spanish
- Extensive multi-media technical resources to help you
- We investigate all quality concerns to ensure our products perform to the highest standards

If the product does not perform as described on this datasheet, we will offer a refund or replacement. For full details of the Abpromise, please visit <https://www.abcam.com/abpromise> or contact our technical team.

Terms and conditions

- Guarantee only valid for products bought direct from Abcam or one of our authorized distributors