

# Anti-Prostaglandin D2 Receptor antibody ab99446

[3 References](#) [2 Images](#)

## Overview

|                            |   |
|----------------------------|---|
| <b>Product name</b>        | Anti-Prostaglandin D2 Receptor antibody   |
| <b>Description</b>         | Rabbit polyclonal to Prostaglandin D2 Receptor  |
| <b>Host species</b>        | Rabbit  |
| <b>Tested applications</b> | <b>Suitable for:</b> WB   |
| <b>Species reactivity</b>  | <b>Reacts with:</b> Mouse, Rat, Human   |
| <b>Immunogen</b>           | Synthetic peptide. This information is proprietary to Abcam and/or its suppliers.   |
| <b>Positive control</b>    | This antibody gave a positive signal in the following whole cell lysates: NIH3T3; EL4; Raw 264.7; A549; HepG2 and in the following tissue lysates: Mouse lung; Mouse brain; Mouse kidney; Rat small intestine; Rat kidney.  |
| <b>General notes</b>       | <p>The Life Science industry has been in the grips of a reproducibility crisis for a number of years. Abcam is leading the way in addressing this with our range of recombinant monoclonal antibodies and knockout edited cell lines for gold-standard validation. Please check that this product meets your needs before purchasing.</p> <p>If you have any questions, special requirements or concerns, please send us an inquiry and/or contact our Support team ahead of purchase. Recommended alternatives for this product can be found below, along with publications, customer reviews and Q&amp;As</p> |

## Properties

|                             |  |
|-----------------------------|--|
| <b>Form</b>                 | Liquid   |
| <b>Storage instructions</b> | Shipped at 4°C. Store at +4°C short term (1-2 weeks). Upon delivery aliquot. Store at -20°C or -80°C. Avoid freeze / thaw cycle.   |
| <b>Storage buffer</b>       | <p>pH: 7.40</p> <p>Preservative: 0.02% Sodium azide</p> <p>Constituent: PBS</p> <p>Batches of this product that have a concentration &lt; 1mg/ml may have BSA added as a stabilising agent. If you would like information about the formulation of a specific lot, please contact our scientific support team who will be happy to help.</p> |
| <b>Purity</b>               | Immunogen affinity purified  |
| <b>Clonality</b>            | Polyclonal   |

Isotype

IgG

## Applications

### The Abpromise guarantee

Our **Abpromise guarantee** covers the use of ab99446 in the following tested applications.

The application notes include recommended starting dilutions; optimal dilutions/concentrations should be determined by the end user.

| Application | Abreviews | Notes  |
|-------------|-----------|--|
| WB          |           | Use a concentration of 1 µg/ml. Detects a band of approximately 40 kDa (predicted molecular weight: 40 kDa). |

## Target

### Function

Receptor for prostaglandin D2 (PGD2). The activity of this receptor is mainly mediated by G(s) proteins that stimulate adenylate cyclase, resulting in an elevation of intracellular cAMP. A mobilization of calcium is also observed, but without formation of inositol 1,4,5-trisphosphate.

### Tissue specificity

Expressed in retinal choroid, ciliary epithelium, longitudinal and circular ciliary muscles, iris, small intestine and platelet membranes.

### Involvement in disease

Genetic variations in PTGDR are associated with susceptibility to asthma-related traits type 1 (ASRT1) [MIM:607277]. Asthma-related traits include clinical symptoms of asthma, such as coughing, wheezing and dyspnea.

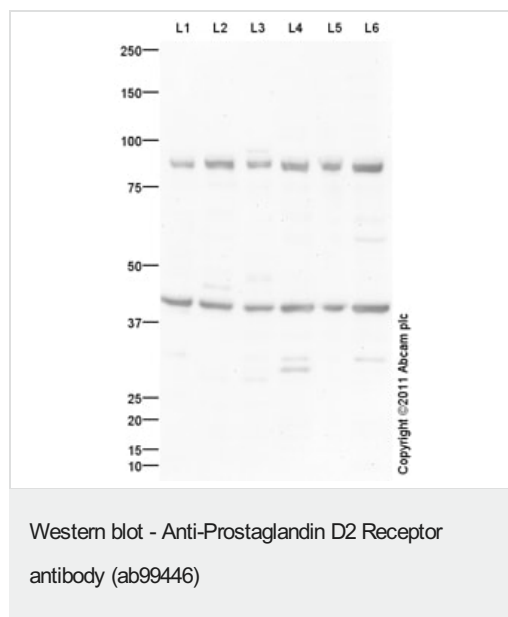
### Sequence similarities

Belongs to the G-protein coupled receptor 1 family.

### Cellular localization

Cell membrane.

## Images



**All lanes :** Anti-Prostaglandin D2 Receptor antibody (ab99446) at 1 µg/ml

**Lane 1 :** Mouse lung normal tissue lysate - total protein (**ab29297**)

**Lane 2 :** Brain (Mouse) Tissue Lysate

**Lane 3 :** Kidney (Mouse) Tissue Lysate

**Lane 4 :** NIH 3T3 (Mouse embryonic fibroblast cell line) Whole Cell Lysate

**Lane 5 :** EL4 whole cell lysate (**ab7183**)

**Lane 6 :** RAW 264.7 (Mouse leukaemic monocyte macrophage cell line) Whole Cell Lysate

Lysates/proteins at 10 µg per lane.

### Secondary

**All lanes :** Goat Anti-Rabbit IgG H&L (HRP) preadsorbed (**ab97080**) at 1/5000 dilution

Developed using the ECL technique.

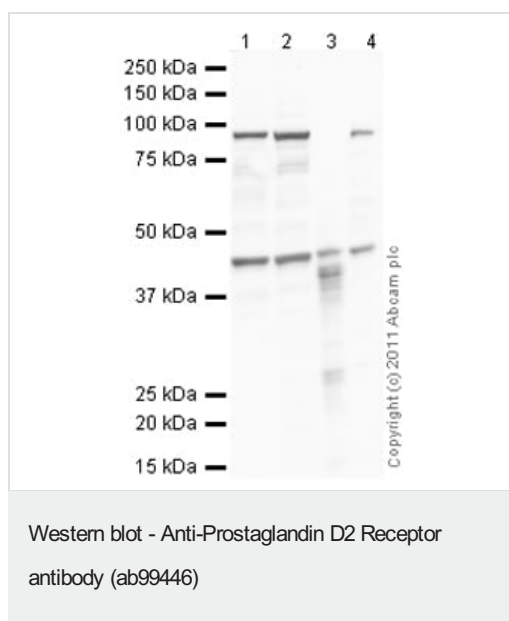
Performed under reducing conditions.

**Predicted band size:** 40 kDa

**Observed band size:** 40 kDa

**Additional bands at:** 87 kDa. We are unsure as to the identity of these extra bands.

**Exposure time:** 4 minutes



**All lanes :** Anti-Prostaglandin D2 Receptor antibody (ab99446) at 1 µg/ml

**Lane 1 :** A549 (Human lung adenocarcinoma epithelial cell line)  
Whole Cell Lysate

**Lane 2 :** HepG2 (Human hepatocellular liver carcinoma cell line)  
Whole Cell Lysate

**Lane 3 :** Small Intestine (Rat) Tissue Lysate

**Lane 4 :** Kidney (Rat) Tissue Lysate

Lysates/proteins at 10 µg per lane.

### Secondary

**All lanes :** Goat Anti-Rabbit IgG H&L (HRP) preadsorbed ([ab97080](#)) at 1/5000 dilution

Developed using the ECL technique.

Performed under reducing conditions.

**Predicted band size:** 40 kDa

**Observed band size:** 45 kDa

**Additional bands at:** 95 kDa. We are unsure as to the identity of these extra bands.

**Exposure time:** 1 minute

**Please note:** All products are "FOR RESEARCH USE ONLY. NOT FOR USE IN DIAGNOSTIC PROCEDURES"

### **Our Abpromise to you: Quality guaranteed and expert technical support**

---

- Replacement or refund for products not performing as stated on the datasheet
- Valid for 12 months from date of delivery
- Response to your inquiry within 24 hours
  
- We provide support in Chinese, English, French, German, Japanese and Spanish
- Extensive multi-media technical resources to help you
- We investigate all quality concerns to ensure our products perform to the highest standards

If the product does not perform as described on this datasheet, we will offer a refund or replacement. For full details of the Abpromise, please visit <https://www.abcam.com/abpromise> or contact our technical team.

### **Terms and conditions**

---

- Guarantee only valid for products bought direct from Abcam or one of our authorized distributors