




## Product datasheet

# Anti-Prostaglandin E Receptor EP1/PTGER1 antibody ab183073

★★★★★ [1 Abreviews](#) [2 References](#) [1 Image](#)

### Overview

<b>Product name</b>	Anti-Prostaglandin E Receptor EP1/PTGER1 antibody
<b>Description</b>	Rabbit polyclonal to Prostaglandin E Receptor EP1/PTGER1
<b>Host species</b>	Rabbit
<b>Tested applications</b>	<b>Suitable for:</b> WB
<b>Species reactivity</b>	<b>Reacts with:</b> Human <b>Predicted to work with:</b> Mouse, Rat 
<b>Immunogen</b>	Synthetic peptide within Human Prostaglandin E Receptor EP1/PTGER1 aa 350 to the C-terminus. The exact immunogen sequence used to generate this antibody is proprietary information. If additional detail on the immunogen is needed to determine the suitability of the antibody for your needs, please <b>contact</b> our Scientific Support team to discuss your requirements. Genbank: NP_000946 Database link: <a href="#">P34995</a>  <a href="#">Run BLAST with</a>  <a href="#">Run BLAST with</a>
<b>Positive control</b>	293T cell lysate, Human lymphoma tissue lysate.
<b>General notes</b>	<p>The Life Science industry has been in the grips of a reproducibility crisis for a number of years. Abcam is leading the way in addressing this with our range of recombinant monoclonal antibodies and knockout edited cell lines for gold-standard validation. Please check that this product meets your needs before purchasing.</p> <p>If you have any questions, special requirements or concerns, please send us an inquiry and/or contact our Support team ahead of purchase. Recommended alternatives for this product can be found below, along with publications, customer reviews and Q&amp;As</p>

### Properties

<b>Form</b>	Liquid
<b>Storage instructions</b>	Shipped at 4°C. Store at +4°C short term (1-2 weeks). Upon delivery aliquot. Store at -20°C long term. Avoid freeze / thaw cycle.
<b>Storage buffer</b>	pH: 7.4 Preservative: 0.05% Sodium azide Constituents: 50% Glycerol (glycerin, glycerine), 49% PBS

	(PBS is without $Mg^{2+}$ and $Ca^{2+}$ )
<b>Purity</b>	Immunogen affinity purified
<b>Clonality</b>	Polyclonal
<b>Isotype</b>	IgG

## Applications

**The Abpromise guarantee** Our **Abpromise guarantee** covers the use of ab183073 in the following tested applications. The application notes include recommended starting dilutions; optimal dilutions/concentrations should be determined by the end user.

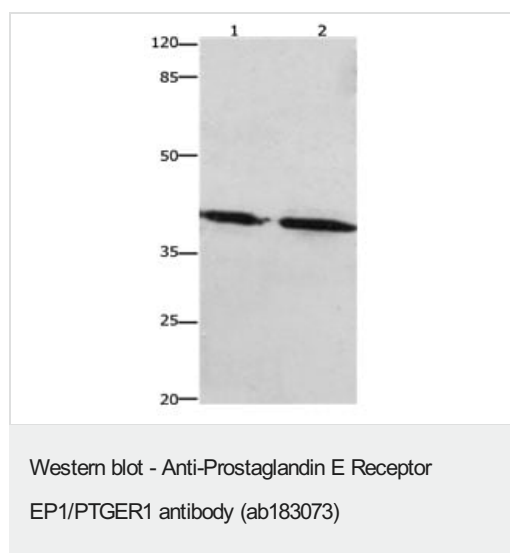
Application	Abreviews	Notes
<b>WB</b>	★★★★★ (1)	1/450 - 1/5000. Predicted molecular weight: 42 kDa.

## Target

**Relevance** PTGER1 is a subtype 1 receptor for prostaglandin E2 (PGE2). This receptor is coupled to the phosphatidylinositol-calcium second messenger system by G(q) proteins. PTGER1 may be an important modulator of renal function and is implicated in the smooth muscle contractile response to PGE2 in various tissues.

**Cellular localization** Cell Membrane; multi-pass membrane protein.

## Images



**All lanes** : Anti-Prostaglandin E Receptor EP1/PTGER1 antibody (ab183073) at 1/450 dilution

**Lane 1** : Human lymphoma tissue lysate

**Lane 2** : 293T cell lysate

Lysates/proteins at 40 µg per lane.

### Secondary

**All lanes** : Goat anti Rabbit IgG - H&L (HRP) at 1/10000 dilution

Developed using the ECL technique.

**Predicted band size:** 42 kDa

**Exposure time:** 1 minute

**Please note:** All products are "FOR RESEARCH USE ONLY. NOT FOR USE IN DIAGNOSTIC PROCEDURES"

### **Our Abpromise to you: Quality guaranteed and expert technical support**

---

- Replacement or refund for products not performing as stated on the datasheet
- Valid for 12 months from date of delivery
- Response to your inquiry within 24 hours
- We provide support in Chinese, English, French, German, Japanese and Spanish
- Extensive multi-media technical resources to help you
- We investigate all quality concerns to ensure our products perform to the highest standards

If the product does not perform as described on this datasheet, we will offer a refund or replacement. For full details of the Abpromise, please visit <https://www.abcam.com/abpromise> or contact our technical team.

### **Terms and conditions**

---

- Guarantee only valid for products bought direct from Abcam or one of our authorized distributors