

Product datasheet

Anti-Prostate Specific Antigen antibody - Catalytic domain ab40949

[1 References](#) [1 Image](#)

Overview

Product name	Anti-Prostate Specific Antigen antibody - Catalytic domain
Description	Rabbit polyclonal to Prostate Specific Antigen - Catalytic domain
Host species	Rabbit
Specificity	This antibody is specific for Kallikrein 3, it does not react with the other Kallikreins (1,2,4-15).
Tested applications	Suitable for: WB
Species reactivity	Reacts with: Human
Immunogen	Synthetic peptide based on the catalytic domain of human Kallikrein 3. (Peptide available as ab43085 .)
General notes	<p>The Life Science industry has been in the grips of a reproducibility crisis for a number of years. Abcam is leading the way in addressing this with our range of recombinant monoclonal antibodies and knockout edited cell lines for gold-standard validation. Please check that this product meets your needs before purchasing.</p> <p>If you have any questions, special requirements or concerns, please send us an inquiry and/or contact our Support team ahead of purchase. Recommended alternatives for this product can be found below, along with publications, customer reviews and Q&As</p>

Properties

Form	Liquid
Storage instructions	Shipped at 4°C. Upon delivery aliquot and store at -20°C. Avoid freeze / thaw cycles.
Storage buffer	Preservative: 0.05% Sodium azide Constituent: 50% Glycerol
Purity	Immunogen affinity purified
Clonality	Polyclonal
Isotype	IgG

Applications

The Abpromise guarantee

Our **Abpromise guarantee** covers the use of ab40949 in the following tested applications.

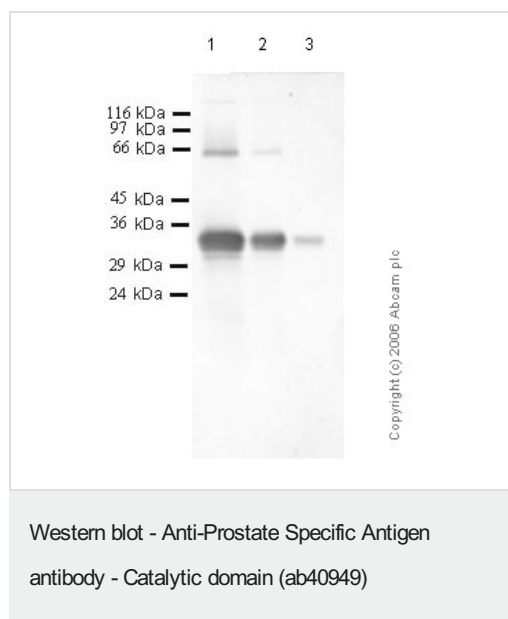
The application notes include recommended starting dilutions; optimal dilutions/concentrations should be determined by the end user.

Application	Abreviews	Notes
WB		1/1000. Predicted molecular weight: 29 kDa. 1/1000 when using colorimetric substrates such as BCIP/NBT and 1/5000 for chemiluminescent substrates. Predicted molecular weight: 29 kDa. Dilution optimised using Chromogenic detection.

Target

Function	Hydrolyzes semenogelin-1 thus leading to the liquefaction of the seminal coagulum.
Sequence similarities	Belongs to the peptidase S1 family. Kallikrein subfamily. Contains 1 peptidase S1 domain.
Cellular localization	Secreted.

Images



All lanes : Anti-Prostate Specific Antigen antibody - Catalytic domain (ab40949) at 1/1000 dilution

Lane 1 : Human Kallikrein 3 at 0.05 µg

Lane 2 : Human Kallikrein 3 at 0.01 µg

Lane 3 : Human Kallikrein 3 at 0.001 µg

Predicted band size: 29 kDa

Observed band size: 33 kDa

Please note: All products are "FOR RESEARCH USE ONLY. NOT FOR USE IN DIAGNOSTIC PROCEDURES"

Our Abpromise to you: Quality guaranteed and expert technical support

- Replacement or refund for products not performing as stated on the datasheet
- Valid for 12 months from date of delivery
- Response to your inquiry within 24 hours
- We provide support in Chinese, English, French, German, Japanese and Spanish
- Extensive multi-media technical resources to help you

- We investigate all quality concerns to ensure our products perform to the highest standards

If the product does not perform as described on this datasheet, we will offer a refund or replacement. For full details of the Abpromise, please visit <https://www.abcam.com/abpromise> or contact our technical team.

Terms and conditions

- Guarantee only valid for products bought direct from Abcam or one of our authorized distributors