

### Anti-Proteasome 19S S4/PSMC1 antibody ab3317

★★★★★ [1 Abreviews](#) [4 References](#) [1 Image](#)

#### Overview

<b>Product name</b>	Anti-Proteasome 19S S4/PSMC1 antibody
<b>Description</b>	Rabbit polyclonal to Proteasome 19S S4/PSMC1
<b>Host species</b>	Rabbit
<b>Specificity</b>	Detects proteasome 19S subunit S4.
<b>Tested applications</b>	<b>Suitable for:</b> WB
<b>Species reactivity</b>	<b>Reacts with:</b> Human
<b>Immunogen</b>	Full length protein corresponding to Proteasome 19S S4/PSMC1. Yeast proteasome 19S subunit S4.
<b>Positive control</b>	WB: HeLa cell lysate.
<b>General notes</b>	<p>The Life Science industry has been in the grips of a reproducibility crisis for a number of years. Abcam is leading the way in addressing this with our range of recombinant monoclonal antibodies and knockout edited cell lines for gold-standard validation. Please check that this product meets your needs before purchasing.</p> <p>If you have any questions, special requirements or concerns, please send us an inquiry and/or contact our Support team ahead of purchase. Recommended alternatives for this product can be found below, along with publications, customer reviews and Q&amp;As</p>

#### Properties

<b>Form</b>	Liquid
<b>Storage instructions</b>	Shipped at 4°C. Store at +4°C short term (1-2 weeks). Upon delivery aliquot. Store at -20°C or -80°C. Avoid freeze / thaw cycle.
<b>Storage buffer</b>	Constituents: 0.1% BSA, 99% PBS
<b>Purity</b>	IgG fraction
<b>Clonality</b>	Polyclonal
<b>Isotype</b>	IgG

#### Applications

**The Abpromise guarantee** Our **Abpromise guarantee** covers the use of ab3317 in the following tested applications.

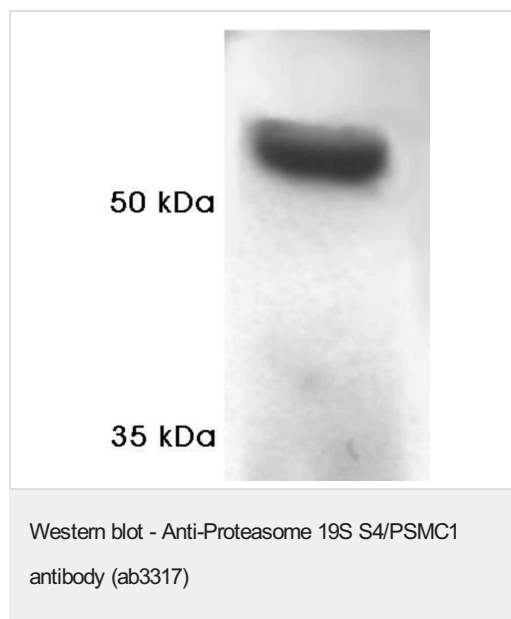
The application notes include recommended starting dilutions; optimal dilutions/concentrations should be determined by the end user.

Application	Abreviews	Notes
WB		1/1000. Detects a band of approximately 56 kDa (predicted molecular weight: 49 kDa). This antibody detects a 56 kDa protein representing proteasome 19S subunit S4 in HeLa cell lysate. This antibody detects, to a lesser extent, an ~35 kDa protein which could correspond to subunit degradation product.

## Target

Function	The 26S protease is involved in the ATP-dependent degradation of ubiquitinated proteins. The regulatory (or ATPase) complex confers ATP dependency and substrate specificity to the 26S complex.
Sequence similarities	Belongs to the AAA ATPase family.
Cellular localization	Cytoplasm. Nucleus.

## Images



Western blot of proteasome 19S subunit S4 on HeLa cell lysate using ab3317.

**Please note:** All products are "FOR RESEARCH USE ONLY. NOT FOR USE IN DIAGNOSTIC PROCEDURES"

## Our Abpromise to you: Quality guaranteed and expert technical support

- Replacement or refund for products not performing as stated on the datasheet
- Valid for 12 months from date of delivery
- Response to your inquiry within 24 hours

- We provide support in Chinese, English, French, German, Japanese and Spanish
- Extensive multi-media technical resources to help you
- We investigate all quality concerns to ensure our products perform to the highest standards

If the product does not perform as described on this datasheet, we will offer a refund or replacement. For full details of the Abpromise, please visit <https://www.abcam.com/abpromise> or contact our technical team.

#### **Terms and conditions**

---

- Guarantee only valid for products bought direct from Abcam or one of our authorized distributors