


## Product datasheet

# Anti-Proteasome 20S alpha 5/PSMA5 antibody ab11437

[8 References](#) [3 Images](#)

### Overview

<b>Product name</b>	Anti-Proteasome 20S alpha 5/PSMA5 antibody
<b>Description</b>	Rabbit polyclonal to Proteasome 20S alpha 5/PSMA5
<b>Host species</b>	Rabbit
<b>Tested applications</b>	<b>Suitable for:</b> IHC-P, ICC/IF, WB
<b>Species reactivity</b>	<b>Reacts with:</b> Human <b>Predicted to work with:</b> Cow, Zebrafish 
<b>Immunogen</b>	Synthetic peptide corresponding to Human Proteasome 20S alpha 5/PSMA5 aa 120-133. Sequence: ALQFGCEEDADPGAM  Database link: <b><u>P28066</u></b> (Peptide available as <b><u>ab41791</u></b> )

 [Run BLAST with](#)

 [Run BLAST with](#)

### General notes

The Life Science industry has been in the grips of a reproducibility crisis for a number of years. Abcam is leading the way in addressing this with our range of recombinant monoclonal antibodies and knockout edited cell lines for gold-standard validation. Please check that this product meets your needs before purchasing.

If you have any questions, special requirements or concerns, please send us an inquiry and/or contact our Support team ahead of purchase. Recommended alternatives for this product can be found below, along with publications, customer reviews and Q&As

### Properties

<b>Form</b>	Liquid
<b>Storage instructions</b>	Shipped at 4°C. Store at +4°C short term (1-2 weeks). Upon delivery aliquot. Store at -20°C. Avoid freeze / thaw cycle.
<b>Storage buffer</b>	Preservative: 0.05% Sodium azide Constituents: 99% PBS, 0.1% BSA
<b>Purity</b>	Immunogen affinity purified
<b>Clonality</b>	Polyclonal
<b>Isotype</b>	IgG

## Applications

### The Abpromise guarantee

Our **Abpromise guarantee** covers the use of ab11437 in the following tested applications.

The application notes include recommended starting dilutions; optimal dilutions/concentrations should be determined by the end user.

Application	Abreviews	Notes
IHC-P		Use a concentration of 5 µg/ml. Perform heat mediated antigen retrieval with citrate buffer pH 6 before commencing with IHC staining protocol.
ICC/IF		Use a concentration of 1 µg/ml.
WB		Use a concentration of 1 µg/ml. Detects a band of approximately 26.5 kDa (predicted molecular weight: 26.5 kDa).

## Target

### Function

The proteasome is a multicatalytic proteinase complex which is characterized by its ability to cleave peptides with Arg, Phe, Tyr, Leu, and Glu adjacent to the leaving group at neutral or slightly basic pH. The proteasome has an ATP-dependent proteolytic activity.

### Tissue specificity

Expressed in fetal brain (at protein level).

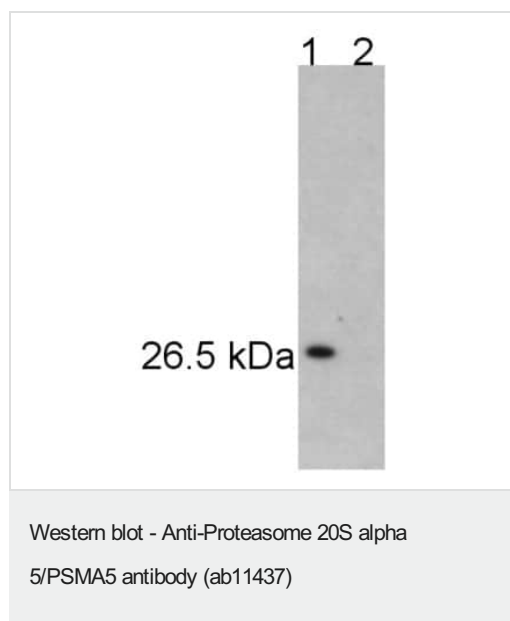
### Sequence similarities

Belongs to the peptidase T1A family.

### Cellular localization

Cytoplasm. Nucleus.

## Images



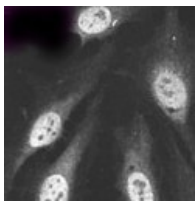
**All lanes :** Anti-Proteasome 20S alpha 5/PSMA5 antibody (ab11437)

**Lane 1 :** HeLa cell extract.

**Lane 2 :** HeLa cell extract with blocking peptide.

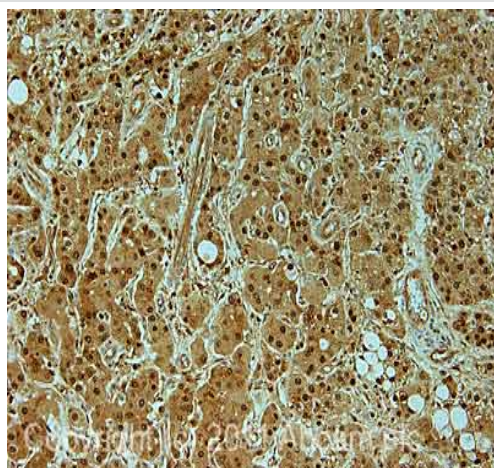
**Predicted band size:** 26.5 kDa

**Observed band size:** 26.5 kDa



Immunocytochemistry/ Immunofluorescence - Anti-Proteasome 20S alpha 5/PSMA5 antibody (ab11437)

Immunofluorescence of HeLa cells using ab11437.



Immunohistochemistry (Formalin/PFA-fixed paraffin-embedded sections) - Anti-Proteasome 20S alpha 5/PSMA5 antibody (ab11437)

IHC image of ab11437 staining in human liver carcinoma liver formalin fixed paraffin embedded tissue section, performed on a Leica Bond™ system using the standard protocol F. The section was pre-treated using heat mediated antigen retrieval with sodium citrate buffer (pH6, epitope retrieval solution 1) for 20 mins. The section was then incubated with ab11437, 5µg/ml, for 15 mins at room temperature and detected using an HRP conjugated compact polymer system. DAB was used as the chromogen. The section was then counterstained with haematoxylin and mounted with DPX.

For other IHC staining systems (automated and non-automated) customers should optimize variable parameters such as antigen retrieval conditions, primary antibody concentration and antibody incubation times.

**Please note:** All products are "FOR RESEARCH USE ONLY. NOT FOR USE IN DIAGNOSTIC PROCEDURES"

### Our Abpromise to you: Quality guaranteed and expert technical support

- Replacement or refund for products not performing as stated on the datasheet
- Valid for 12 months from date of delivery
- Response to your inquiry within 24 hours
- We provide support in Chinese, English, French, German, Japanese and Spanish
- Extensive multi-media technical resources to help you
- We investigate all quality concerns to ensure our products perform to the highest standards

If the product does not perform as described on this datasheet, we will offer a refund or replacement. For full details of the Abpromise, please visit <https://www.abcam.com/abpromise> or contact our technical team.

### Terms and conditions

- Guarantee only valid for products bought direct from Abcam or one of our authorized distributors