




## Product datasheet

# Anti-Proteasome 20S alpha 5/PSMA5 antibody ab189855

[2 References](#) [2 Images](#)

### Overview

<b>Product name</b>	Anti-Proteasome 20S alpha 5/PSMA5 antibody
<b>Description</b>	Rabbit polyclonal to Proteasome 20S alpha 5/PSMA5
<b>Host species</b>	Rabbit
<b>Tested applications</b>	<b>Suitable for:</b> WB, ICC/IF
<b>Species reactivity</b>	<b>Reacts with:</b> Mouse, Human <b>Predicted to work with:</b> Cow 
<b>Immunogen</b>	Recombinant full length protein corresponding to Human Proteasome 20S alpha 5/PSMA5 aa 1 to the C-terminus. Database link: <a href="#">P28066</a>  <a href="#">Run BLAST with</a>  <a href="#">Run BLAST with</a>
<b>General notes</b>	<p>The Life Science industry has been in the grips of a reproducibility crisis for a number of years. Abcam is leading the way in addressing this with our range of recombinant monoclonal antibodies and knockout edited cell lines for gold-standard validation. Please check that this product meets your needs before purchasing.</p> <p>If you have any questions, special requirements or concerns, please send us an inquiry and/or contact our Support team ahead of purchase. Recommended alternatives for this product can be found below, along with publications, customer reviews and Q&amp;As</p>

### Properties

<b>Form</b>	Liquid
<b>Storage instructions</b>	Shipped at 4°C. Store at +4°C short term (1-2 weeks). Upon delivery aliquot. Store at -20°C long term. Avoid freeze / thaw cycle.
<b>Storage buffer</b>	pH: 7.30 Preservative: 0.02% Sodium azide Constituents: 50% Glycerol, 49% PBS
<b>Purity</b>	Immunogen affinity purified
<b>Clonality</b>	Polyclonal
<b>Isotype</b>	IgG

## Applications

### The Abpromise guarantee

Our **Abpromise guarantee** covers the use of ab189855 in the following tested applications.

The application notes include recommended starting dilutions; optimal dilutions/concentrations should be determined by the end user.

Application	Abreviews	Notes
WB		1/500 - 1/2000. Predicted molecular weight: 26 kDa.
ICC/IF		Use at an assay dependent concentration.

## Target

### Function

The proteasome is a multicatalytic proteinase complex which is characterized by its ability to cleave peptides with Arg, Phe, Tyr, Leu, and Glu adjacent to the leaving group at neutral or slightly basic pH. The proteasome has an ATP-dependent proteolytic activity.

### Tissue specificity

Expressed in fetal brain (at protein level).

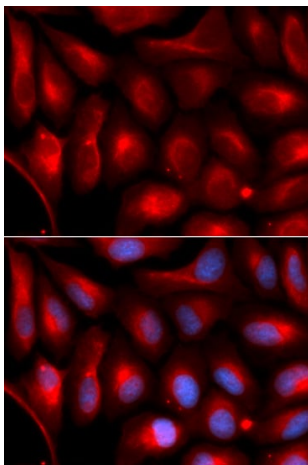
### Sequence similarities

Belongs to the peptidase T1A family.

### Cellular localization

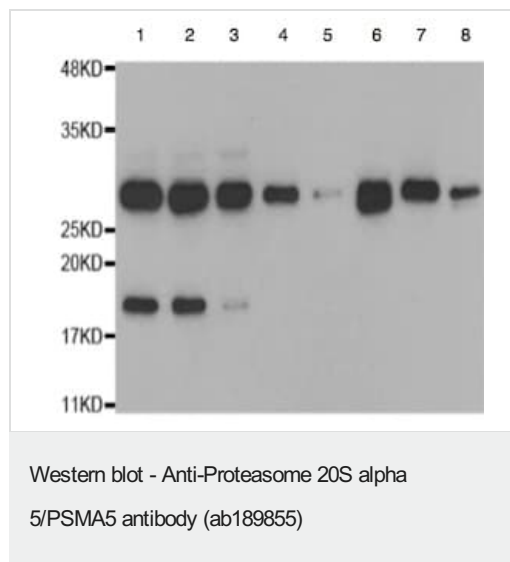
Cytoplasm. Nucleus.

## Images



Immunocytochemistry/Immunofluorescence analysis of U2OS cells using ab189855. Blue DAPI for nuclear staining.

Immunocytochemistry/ Immunofluorescence - Anti-Proteasome 20S alpha 5/PSMA5 antibody (ab189855)



**All lanes :** Anti-Proteasome 20S alpha 5/PSMA5 antibody (ab189855) at 1/500 dilution

**Lane 1 :** MCF7 cell extract

**Lane 2 :** 293T cell extract

**Lane 3 :** HepG2 cell extract

**Lane 4 :** U-251MG cell extract

**Lane 5 :** BxPC3 cell extract

**Lane 6 :** Mouse liver extract

**Lane 7 :** Mouse thymus extract

**Lane 8 :** Mouse heart extract

**Predicted band size:** 26 kDa

**Please note:** All products are "FOR RESEARCH USE ONLY. NOT FOR USE IN DIAGNOSTIC PROCEDURES"

### Our Abpromise to you: Quality guaranteed and expert technical support

- Replacement or refund for products not performing as stated on the datasheet
- Valid for 12 months from date of delivery
- Response to your inquiry within 24 hours
- We provide support in Chinese, English, French, German, Japanese and Spanish
- Extensive multi-media technical resources to help you
- We investigate all quality concerns to ensure our products perform to the highest standards

If the product does not perform as described on this datasheet, we will offer a refund or replacement. For full details of the Abpromise, please visit <https://www.abcam.com/abpromise> or contact our technical team.

### Terms and conditions

- Guarantee only valid for products bought direct from Abcam or one of our authorized distributors