


Product datasheet

Anti-Proteasome 20S beta 6 antibody [EPR9684] ab150392

Recombinant RabMAb

★★★★★ [3 Abreviews](#) [1 Reference](#) [3 Images](#)

Overview

Product name	Anti-Proteasome 20S beta 6 antibody [EPR9684]
Description	Rabbit monoclonal [EPR9684] to Proteasome 20S beta 6
Host species	Rabbit
Tested applications	Suitable for: WB, ICC/IF Unsuitable for: IHC-P
Species reactivity	Reacts with: Human Predicted to work with: Mouse, Rat 
Immunogen	Synthetic peptide. This information is proprietary to Abcam and/or its suppliers.
Positive control	Recombinant Human Proteasome 20S beta 6 protein (ab116187) can be used as a positive control in WB. Human fetal liver, NCI-H460 and Caco 2 cell lysates; HeLa cells.
General notes	<p>This product is a recombinant monoclonal antibody, which offers several advantages including:</p> <ul style="list-style-type: none">- High batch-to-batch consistency and reproducibility- Improved sensitivity and specificity- Long-term security of supply- Animal-free production <p>For more information see here.</p> <p>Our RabMAb[®] technology is a patented hybridoma-based technology for making rabbit monoclonal antibodies. For details on our patents, please refer to RabMAb[®] patents.</p>

Properties

Form	Liquid
Storage instructions	Shipped at 4°C. Store at -20°C.
Storage buffer	pH: 7.2 Preservative: 0.01% Sodium azide Constituents: 9% PBS, 40% Glycerol (glycerin, glycerine), 0.05% BSA, 50% Tissue culture supernatant
Purity	Tissue culture supernatant

Clonality	Monoclonal
Clone number	EPR9684
Isotype	IgG

Applications

The Abpromise guarantee Our **Abpromise guarantee** covers the use of ab150392 in the following tested applications. The application notes include recommended starting dilutions; optimal dilutions/concentrations should be determined by the end user.

Application	Abreviews	Notes
WB	★★★★★ (3)	1/1000 - 1/10000. Predicted molecular weight: 25 kDa.
ICC/IF		1/100 - 1/250.

Application notes Is unsuitable for IHC-P.

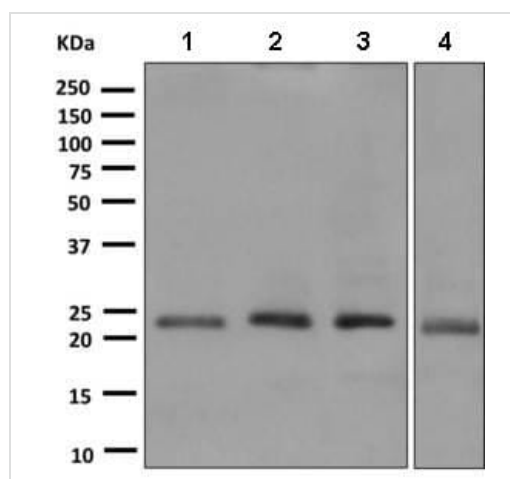
Target

Function The proteasome is a multicatalytic proteinase complex which is characterized by its ability to cleave peptides with Arg, Phe, Tyr, Leu, and Glu adjacent to the leaving group at neutral or slightly basic pH. The proteasome has an ATP-dependent proteolytic activity. This unit is responsible of the peptidyl glutamyl-like activity. May catalyze basal processing of intracellular antigens.

Sequence similarities Belongs to the peptidase T1B family.

Cellular localization Cytoplasm. Nucleus.

Images



Western blot - Anti-Proteasome 20S beta 6 antibody [EPR9684] (ab150392)

All lanes : Anti-Proteasome 20S beta 6 antibody [EPR9684] (ab150392) at 1/1000 dilution

Lane 1 : Human fetal liver cell lysate

Lane 2 : NCI-H460 cell lysate

Lane 3 : Caco 2 cell lysate

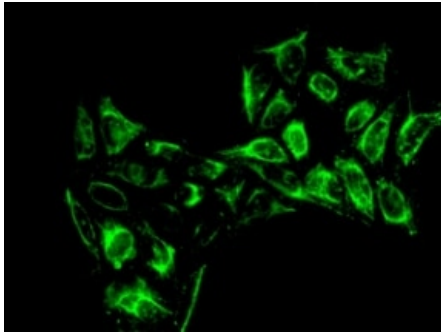
Lane 4 : HeLa cell lysate

Lysates/proteins at 10 µg per lane.

Secondary

All lanes : HRP labelled Goat anti-Rabbit at 1/2000 dilution

Predicted band size: 25 kDa



Immunofluorescent analysis of HeLa cells labelling Proteasome 20S beta 6 with ab150392 at 1/100 dilution.

Immunocytochemistry/ Immunofluorescence - Anti-Proteasome 20S beta 6 antibody [EPR9684] (ab150392)

Why choose a recombinant antibody?



Anti-Proteasome 20S beta 6 antibody [EPR9684] (ab150392)

Please note: All products are "FOR RESEARCH USE ONLY. NOT FOR USE IN DIAGNOSTIC PROCEDURES"

Our Abpromise to you: Quality guaranteed and expert technical support

- Replacement or refund for products not performing as stated on the datasheet
- Valid for 12 months from date of delivery
- Response to your inquiry within 24 hours
- We provide support in Chinese, English, French, German, Japanese and Spanish
- Extensive multi-media technical resources to help you
- We investigate all quality concerns to ensure our products perform to the highest standards

If the product does not perform as described on this datasheet, we will offer a refund or replacement. For full details of the Abpromise, please visit <https://www.abcam.com/abpromise> or contact our technical team.

Terms and conditions

- Guarantee only valid for products bought direct from Abcam or one of our authorized distributors