


Product datasheet

Anti-Proteasome 20S beta 7/PSMB7 antibody ab154745

★★★★★ [1 Abreviews](#) [1 References](#) [4 Images](#)

Overview

Product name	Anti-Proteasome 20S beta 7/PSMB7 antibody
Description	Rabbit polyclonal to Proteasome 20S beta 7/PSMB7
Host species	Rabbit
Tested applications	Suitable for: WB, IHC-P, ICC/IF
Species reactivity	Reacts with: Mouse, Human Predicted to work with: Rat, Cow, Pig 
Immunogen	Recombinant fragment corresponding to Human Proteasome 20S beta 7/PSMB7 aa 85-277. Database link: Q99436
Positive control	A549, HeLa, HepG, HCT116 and mouse brain lysates; HeLa cells; Human MDA-MB157 xenograft.
General notes	<p>The Life Science industry has been in the grips of a reproducibility crisis for a number of years. Abcam is leading the way in addressing this with our range of recombinant monoclonal antibodies and knockout edited cell lines for gold-standard validation. Please check that this product meets your needs before purchasing.</p> <p>If you have any questions, special requirements or concerns, please send us an inquiry and/or contact our Support team ahead of purchase. Recommended alternatives for this product can be found below, along with publications, customer reviews and Q&As</p>

Properties

Form	Liquid
Storage instructions	Shipped at 4°C. Upon delivery aliquot. Store at -20°C or -80°C. Avoid freeze / thaw cycle.
Storage buffer	pH: 7.00 Preservative: 0.01% Thimerosal (merthiolate) Constituents: 1.21% Tris, 0.75% Glycine, 20% Glycerol (glycerin, glycerine)
Purity	Immunogen affinity purified
Clonality	Polyclonal
Isotype	IgG

Applications

The Abpromise guarantee

Our **Abpromise guarantee** covers the use of ab154745 in the following tested applications.

The application notes include recommended starting dilutions; optimal dilutions/concentrations should be determined by the end user.

Application	Abreviews	Notes
WB	★★★★★ (1)	1/500 - 1/3000. Predicted molecular weight: 30 kDa.
IHC-P		1/100 - 1/1000. Perform heat mediated antigen retrieval before commencing with IHC staining protocol using 10mM Citrate buffer (pH6.0) or Tris-EDTA buffer (pH8.0).
ICC/IF		1/100 - 1/1000.

Target

Function

The proteasome is a multicatalytic proteinase complex which is characterized by its ability to cleave peptides with Arg, Phe, Tyr, Leu, and Glu adjacent to the leaving group at neutral or slightly basic pH. The proteasome has an ATP-dependent proteolytic activity. This unit is responsible of the trypsin-like activity.

Tissue specificity

Expressed at a low level in colonic mucosa. Up-regulated in colorectal cancer tissues.

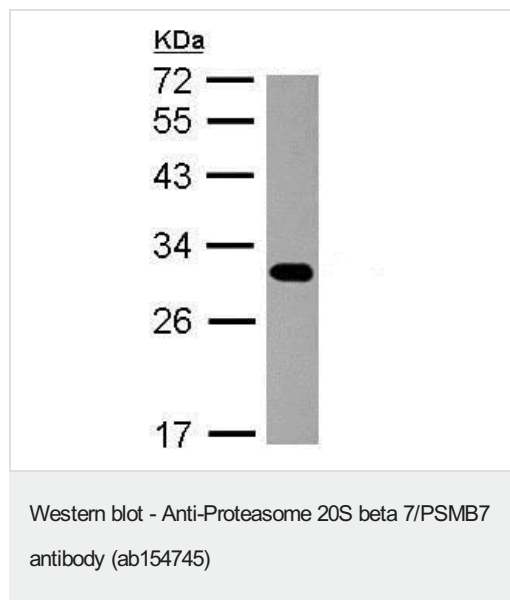
Sequence similarities

Belongs to the peptidase T1B family.

Cellular localization

Cytoplasm. Nucleus.

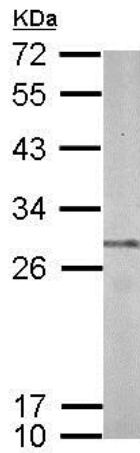
Images



Anti-Proteasome 20S beta 7/PSMB7 antibody (ab154745) at 1/1000 dilution + HepG2 whole cell lysate at 30 µg

Predicted band size: 30 kDa

12% SDS PAGE

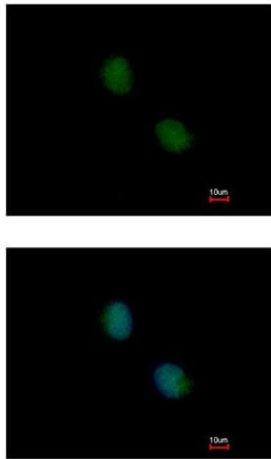


Western blot - Anti-Proteasome 20S beta 7/PSMB7 antibody (ab154745)

Anti-Proteasome 20S beta 7/PSMB7 antibody (ab154745) at 1/1000 dilution + mouse brain whole cell lysate at 50 μ g

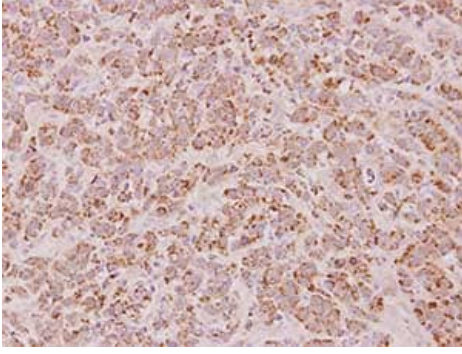
Predicted band size: 30 kDa

12% SDS PAGE



Immunocytochemistry/ Immunofluorescence - Anti-Proteasome 20S beta 7/PSMB7 antibody (ab154745)

Immunofluorescent analysis of paraformaldehyde-fixed HeLa cells labeling Proteasome 20S beta 7/PSMB7 with ab154745 at 1/200 dilution. Lower panel was co-stained with Hoechst 33342.



Immunohistochemical analysis of paraffin-embedded MDA-MB-157 xenograft labeling Proteasome 20S beta 7/PSMB7 with ab154745 at 1/100 dilution.

Immunohistochemistry (Formalin/PFA-fixed paraffin-embedded sections) - Anti-Proteasome 20S beta 7/PSMB7 antibody (ab154745)

Please note: All products are "FOR RESEARCH USE ONLY. NOT FOR USE IN DIAGNOSTIC PROCEDURES"

Our Abpromise to you: Quality guaranteed and expert technical support

- Replacement or refund for products not performing as stated on the datasheet
- Valid for 12 months from date of delivery
- Response to your inquiry within 24 hours
- We provide support in Chinese, English, French, German, Japanese and Spanish
- Extensive multi-media technical resources to help you
- We investigate all quality concerns to ensure our products perform to the highest standards

If the product does not perform as described on this datasheet, we will offer a refund or replacement. For full details of the Abpromise, please visit <https://www.abcam.com/abpromise> or contact our technical team.

Terms and conditions

- Guarantee only valid for products bought direct from Abcam or one of our authorized distributors