


Anti-Proteasome 26S S2/PSMD2 antibody ab125914

[1 References](#) [2 Images](#)

Overview

Product name	Anti-Proteasome 26S S2/PSMD2 antibody
Description	Rabbit polyclonal to Proteasome 26S S2/PSMD2
Host species	Rabbit
Tested applications	Suitable for: WB, ICC/IF
Species reactivity	Reacts with: Human Predicted to work with: Mouse, Rat, Chicken, Cow, Xenopus laevis, Zebrafish 
Immunogen	Recombinant fragment corresponding to Human Proteasome 26S S2/PSMD2 aa 504-746. Database link: Q13200
Positive control	293T, A431 and Raji cell lysates and Human A431 cells.
General notes	<p>The Life Science industry has been in the grips of a reproducibility crisis for a number of years. Abcam is leading the way in addressing this with our range of recombinant monoclonal antibodies and knockout edited cell lines for gold-standard validation. Please check that this product meets your needs before purchasing.</p> <p>If you have any questions, special requirements or concerns, please send us an inquiry and/or contact our Support team ahead of purchase. Recommended alternatives for this product can be found below, along with publications, customer reviews and Q&As</p>

Properties

Form	Liquid
Storage instructions	Shipped at 4°C. Upon delivery aliquot and store at -20°C or -80°C. Avoid repeated freeze / thaw cycles.
Storage buffer	pH: 7.00 Preservative: 0.01% Thimerosal (merthiolate) Constituents: 1.21% Tris, 0.75% Glycine, 20% Glycerol (glycerin, glycerine)
Purity	Immunogen affinity purified
Clonality	Polyclonal
Isotype	IgG

Applications

The Abpromise guarantee

Our **Abpromise guarantee** covers the use of ab125914 in the following tested applications.

The application notes include recommended starting dilutions; optimal dilutions/concentrations should be determined by the end user.

Application	Abreviews	Notes
WB		1/500 - 1/3000. Predicted molecular weight: 100 kDa.
ICC/IF		1/100 - 1/500.

Target

Function

Acts as a regulatory subunit of the 26 proteasome which is involved in the ATP-dependent degradation of ubiquitinated proteins.

Binds to the intracellular domain of tumor necrosis factor type 1 receptor. The binding domain of TRAP1 and TRAP2 resides outside the death domain of TNFR1.

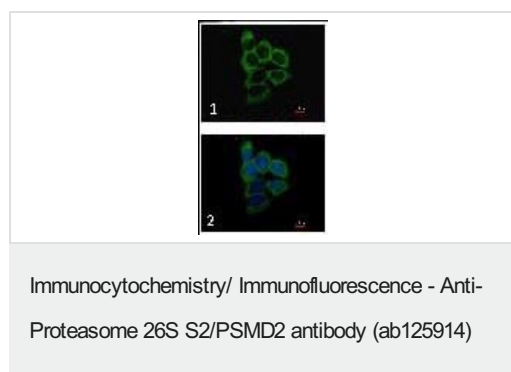
Tissue specificity

Found in skeletal muscle, liver, heart, brain, kidney, pancreas, lung and placenta.

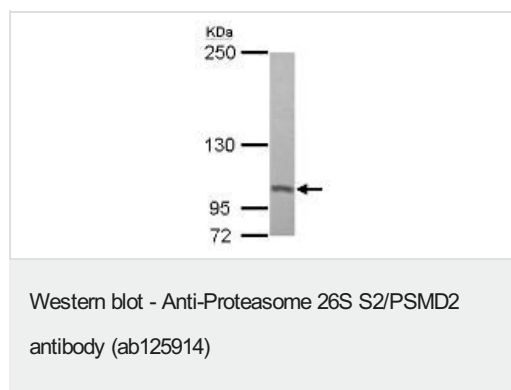
Sequence similarities

Belongs to the proteasome subunit S2 family.
Contains 7 PC repeats.

Images



ab125914, at 1/500, staining Proteasome 26S S2/PSMD2 antibody in Human A431 cells by Immunofluorescence (methanol-fixed).



Anti-Proteasome 26S S2/PSMD2 antibody (ab125914) at 1/500 dilution + A431 whole cell lysate at 30 µg

Predicted band size: 100 kDa

Gel concentration: 5%

Please note: All products are "FOR RESEARCH USE ONLY. NOT FOR USE IN DIAGNOSTIC PROCEDURES"

Our Abpromise to you: Quality guaranteed and expert technical support

- Replacement or refund for products not performing as stated on the datasheet
- Valid for 12 months from date of delivery
- Response to your inquiry within 24 hours
- We provide support in Chinese, English, French, German, Japanese and Spanish
- Extensive multi-media technical resources to help you
- We investigate all quality concerns to ensure our products perform to the highest standards

If the product does not perform as described on this datasheet, we will offer a refund or replacement. For full details of the Abpromise, please visit <https://www.abcam.com/abpromise> or contact our technical team.

Terms and conditions

- Guarantee only valid for products bought direct from Abcam or one of our authorized distributors