


Anti-Proteasome 26S S2/PSMD2 antibody ab140675

★★★★★ [2 Abreviews](#) [1 References](#) [5 Images](#)

Overview

Product name	Anti-Proteasome 26S S2/PSMD2 antibody
Description	Rabbit polyclonal to Proteasome 26S S2/PSMD2
Host species	Rabbit
Tested applications	Suitable for: IHC-Fr, WB, IP
Species reactivity	Reacts with: Mouse, Human Predicted to work with: Rat, Rabbit, Horse, Chicken, Guinea pig, Cow, Dog, Turkey, Pig, Chimpanzee, Non human primates, Zebrafish, Rhesus monkey, Gorilla, Chinese hamster, Orangutan, Xenopus tropicalis 
Immunogen	Synthetic peptide corresponding to Human Proteasome 26S S2/PSMD2 aa 50-100. Database link: NP_002799.3
Positive control	WB: HEK293T, HeLa, Jurkat, NIH 3T3 whole cell lysate. IP: HEK293T cells. IHC-Fr: Human ovarian carcinoma, Mouse renal cell carcinoma.
General notes	<p>The Life Science industry has been in the grips of a reproducibility crisis for a number of years. Abcam is leading the way in addressing this with our range of recombinant monoclonal antibodies and knockout edited cell lines for gold-standard validation. Please check that this product meets your needs before purchasing.</p> <p>If you have any questions, special requirements or concerns, please send us an inquiry and/or contact our Support team ahead of purchase. Recommended alternatives for this product can be found below, along with publications, customer reviews and Q&As</p>

Properties

Form	Liquid
Storage instructions	Shipped at 4°C. Store at +4°C.
Storage buffer	pH: 7 Preservative: 0.09% Sodium azide Constituent: 99% Tris citrate/phosphate
	pH 7-8
Purity	Immunogen affinity purified
Purification notes	Antibody concentration was determined by extinction coefficient: absorbance at 280 nm of 1.4

	equals 1.0 mg of IgG.
Clonality	Polyclonal
Isotype	IgG

Applications

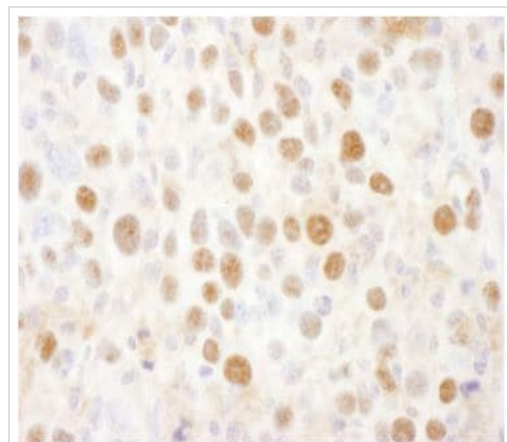
The Abpromise guarantee Our **Abpromise guarantee** covers the use of ab140675 in the following tested applications. The application notes include recommended starting dilutions; optimal dilutions/concentrations should be determined by the end user.

Application	Abreviews	Notes
IHC-Fr		1/500 - 1/2000. Epitope retrieval with citrate buffer pH 6.0 is recommended for FFPE tissue sections.
WB	★★★★★ (1)	1/1000 - 1/5000. Predicted molecular weight: 100 kDa.
IP		Use at 2-10 µg/mg of lysate.

Target

Function	Acts as a regulatory subunit of the 26 proteasome which is involved in the ATP-dependent degradation of ubiquitinated proteins. Binds to the intracellular domain of tumor necrosis factor type 1 receptor. The binding domain of TRAP1 and TRAP2 resides outside the death domain of TNFR1.
Tissue specificity	Found in skeletal muscle, liver, heart, brain, kidney, pancreas, lung and placenta.
Sequence similarities	Belongs to the proteasome subunit S2 family. Contains 7 PC repeats.

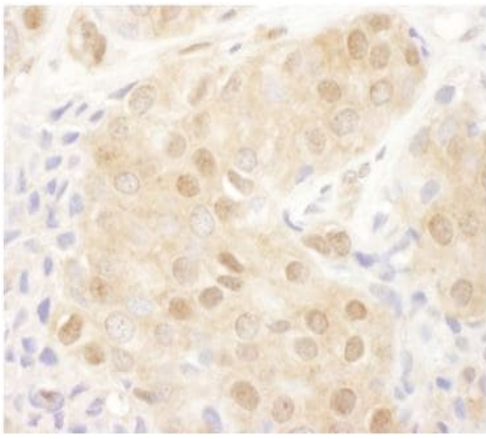
Images



Immunohistochemical analysis of frozen section of mouse renal cell carcinoma with ab140675 at 1/1000 (1 µg/ml) dilution.

Detection: DAB

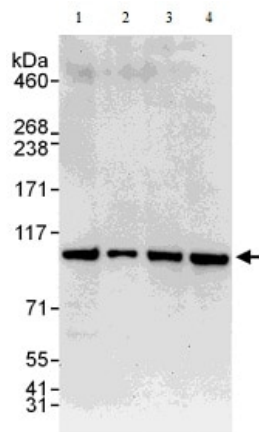
Immunohistochemistry (Frozen sections) - Anti-Proteasome 26S S2/PSMD2 antibody (ab140675)



Immunohistochemistry (Frozen sections) - Anti-Proteasome 26S S2/PSMD2 antibody (ab140675)

Immunohistochemical analysis of frozen section of human ovarian carcinoma with ab140675 at 1/1000 (1 µg/ml) dilution.

Detection: DAB



Western blot - Anti-Proteasome 26S S2/PSMD2 antibody (ab140675)

All lanes : Anti-Proteasome 26S S2/PSMD2 antibody (ab140675) at 0.4 µg/ml

Lane 1 : Whole cell lysate prepared from 293T cells at 50 µg

Lane 2 : Whole cell lysate prepared from 293T cells at 15 µg

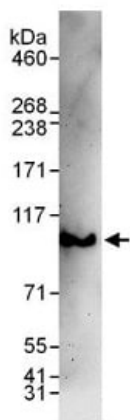
Lane 3 : Whole cell lysate prepared from HeLa cells at 50 µg

Lane 4 : Whole cell lysate prepared from Jurkat cells at 50 µg

Developed using the ECL technique.

Predicted band size: 100 kDa

Exposure time: 30 seconds



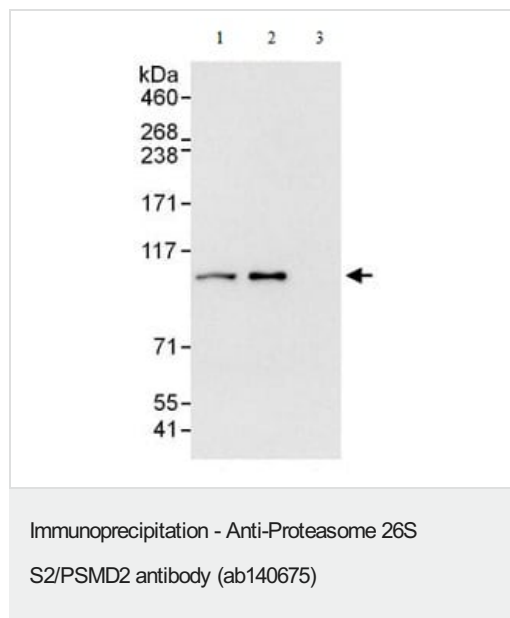
Western blot - Anti-Proteasome 26S S2/PSMD2 antibody (ab140675)

Anti-Proteasome 26S S2/PSMD2 antibody (ab140675) at 0.4 µg/ml + whole cell lysate prepared from NIH3T3 cells at 50 µg

Developed using the ECL technique.

Predicted band size: 100 kDa

Exposure time: 3 minutes



Detection of Human Proteasome 26S S2/PSMD2 by Western Blot of Immunoprecipitates. Samples: Whole cell lysate (1 mg for IP; 20% of IP loaded) from 293T cells.

Lane 1: IP with an antibody which recognizes a different epitope of anti-Proteasome 26S S2/PSMD2 antibody.

Lane 2: ab140675 used for IP at 6 µg/mg lysate.

Lane 3: Control IgG. For blotting immunoprecipitated Proteasome 26S S2/PSMD2, ab140675 was used at 1 µg/ml. Detection: Chemiluminescence with an exposure time of 3 seconds.

Please note: All products are "FOR RESEARCH USE ONLY. NOT FOR USE IN DIAGNOSTIC PROCEDURES"

Our Abpromise to you: Quality guaranteed and expert technical support

- Replacement or refund for products not performing as stated on the datasheet
- Valid for 12 months from date of delivery
- Response to your inquiry within 24 hours
- We provide support in Chinese, English, French, German, Japanese and Spanish
- Extensive multi-media technical resources to help you
- We investigate all quality concerns to ensure our products perform to the highest standards

If the product does not perform as described on this datasheet, we will offer a refund or replacement. For full details of the Abpromise, please visit <https://www.abcam.com/abpromise> or contact our technical team.

Terms and conditions

- Guarantee only valid for products bought direct from Abcam or one of our authorized distributors