


# Anti-Proteasome 26S S2/PSMD2 antibody ab197054

[1 References](#) [4 Images](#)

### Overview

<b>Product name</b>	Anti-Proteasome 26S S2/PSMD2 antibody
<b>Description</b>	Rabbit polyclonal to Proteasome 26S S2/PSMD2
<b>Host species</b>	Rabbit
<b>Tested applications</b>	<b>Suitable for:</b> IHC-P, WB, ICC/IF
<b>Species reactivity</b>	<b>Reacts with:</b> Mouse, Human <b>Predicted to work with:</b> Rat 
<b>Immunogen</b>	Recombinant fragment corresponding to Human Proteasome 26S S2/PSMD2 (N terminal). Database link: <a href="#">Q13200</a>
<b>Positive control</b>	SW480, OVCAR3, M21, U937 and SHSYSY cell lysates. Mouse testis, heart and liver lysates. Human breast cancer and lung cancer tissues. HeLa cells.
<b>General notes</b>	<p>The Life Science industry has been in the grips of a reproducibility crisis for a number of years. Abcam is leading the way in addressing this with our range of recombinant monoclonal antibodies and knockout edited cell lines for gold-standard validation. Please check that this product meets your needs before purchasing.</p> <p>If you have any questions, special requirements or concerns, please send us an inquiry and/or contact our Support team ahead of purchase. Recommended alternatives for this product can be found below, along with publications, customer reviews and Q&amp;As</p>

### Properties

<b>Form</b>	Liquid
<b>Storage instructions</b>	Shipped at 4°C. Store at +4°C short term (1-2 weeks). Upon delivery aliquot. Store at -20°C long term. Avoid freeze / thaw cycle.
<b>Storage buffer</b>	pH: 7.40 Preservative: 0.02% Sodium azide Constituents: 50% Glycerol, 49% PBS, 0.88% Sodium chloride  PBS without Mg <sup>2+</sup> and Ca <sup>2+</sup>
<b>Purity</b>	Immunogen affinity purified
<b>Clonality</b>	Polyclonal
<b>Isotype</b>	IgG

## Applications

### The Abpromise guarantee

Our **Abpromise guarantee** covers the use of ab197054 in the following tested applications.

The application notes include recommended starting dilutions; optimal dilutions/concentrations should be determined by the end user.

Application	Abreviews	Notes
IHC-P		1/50 - 1/200.
WB		1/500 - 1/2000. Predicted molecular weight: 100 kDa.
ICC/IF		1/50 - 1/200.

## Target

### Function

Acts as a regulatory subunit of the 26 proteasome which is involved in the ATP-dependent degradation of ubiquitinated proteins.

Binds to the intracellular domain of tumor necrosis factor type 1 receptor. The binding domain of TRAP1 and TRAP2 resides outside the death domain of TNFR1.

### Tissue specificity

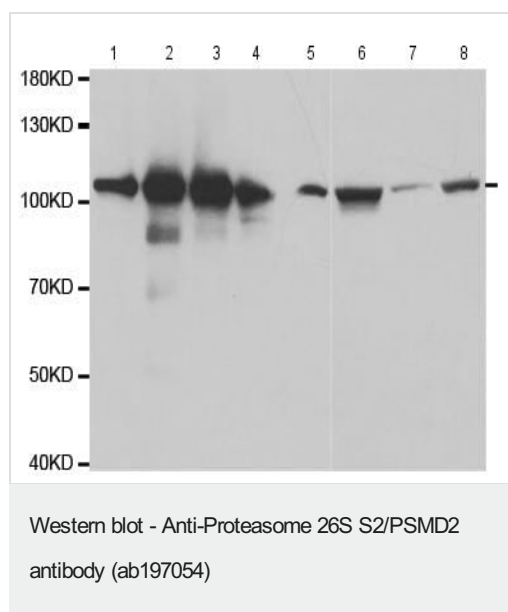
Found in skeletal muscle, liver, heart, brain, kidney, pancreas, lung and placenta.

### Sequence similarities

Belongs to the proteasome subunit S2 family.

Contains 7 PC repeats.

## Images



**All lanes :** Anti-Proteasome 26S S2/PSMD2 antibody (ab197054) at 1/500 dilution

**Lane 1 :** SW480 cell lysate

**Lane 2 :** OVCAR3 cell lysate

**Lane 3 :** M21 cell lysate

**Lane 4 :** U937 cell lysate

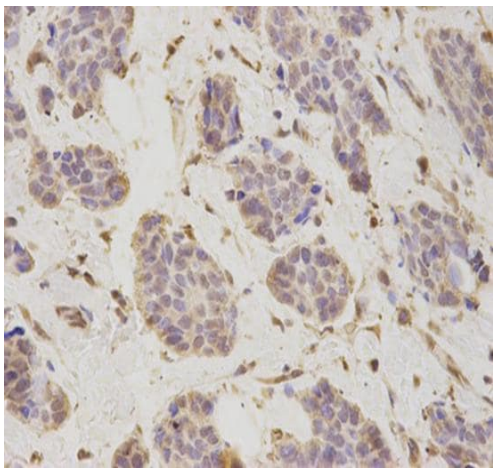
**Lane 5 :** SHSY5Y cell lysate

**Lane 6 :** mouse testis lysate

**Lane 7 :** mouse heart lysate

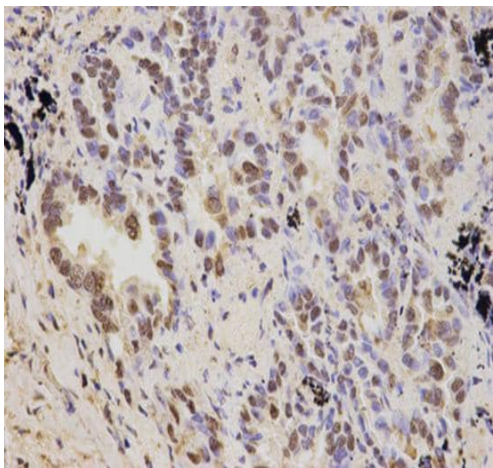
**Lane 8 :** mouse liver lysate

**Predicted band size:** 100 kDa



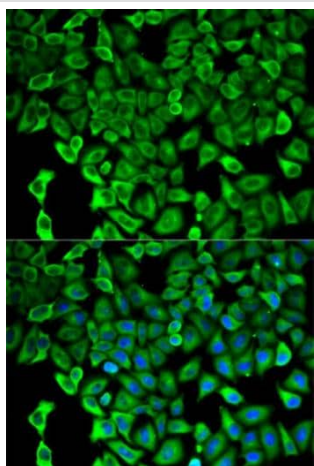
Immunohistochemical analysis of paraffin-embedded Human breast cancer tissue labeling Proteasome 26S S2/PSMD2 with ab197054 at a 1/200 dilution.

Immunohistochemistry (Formalin/PFA-fixed paraffin-embedded sections) - Anti-Proteasome 26S S2/PSMD2 antibody (ab197054)



Immunohistochemical analysis of paraffin-embedded Human lung cancer tissue labeling Proteasome 26S S2/PSMD2 with ab197054 at a 1/200 dilution.

Immunohistochemistry (Formalin/PFA-fixed paraffin-embedded sections) - Anti-Proteasome 26S S2/PSMD2 antibody (ab197054)



Immunofluorescence analysis of HeLa cells, labeling Proteasome 26S S2/PSMD2 (green) with ab197054 at a 1/50 dilution. Blue: DAPI for nuclear staining.

Immunocytochemistry/ Immunofluorescence - Anti-Proteasome 26S S2/PSMD2 antibody (ab197054)

**Please note:** All products are "FOR RESEARCH USE ONLY. NOT FOR USE IN DIAGNOSTIC PROCEDURES"

### Our Abpromise to you: Quality guaranteed and expert technical support

---

- Replacement or refund for products not performing as stated on the datasheet
- Valid for 12 months from date of delivery
- Response to your inquiry within 24 hours
- We provide support in Chinese, English, French, German, Japanese and Spanish
- Extensive multi-media technical resources to help you
- We investigate all quality concerns to ensure our products perform to the highest standards

If the product does not perform as described on this datasheet, we will offer a refund or replacement. For full details of the Abpromise, please visit <https://www.abcam.com/abpromise> or contact our technical team.

### Terms and conditions

---

- Guarantee only valid for products bought direct from Abcam or one of our authorized distributors