




Product datasheet

Anti-Proteasome 26S S3/PSMD3 antibody ab140440

★★★★★ [2 Abreviews](#) [2 Images](#)

Overview

Product name	Anti-Proteasome 26S S3/PSMD3 antibody
Description	Rabbit polyclonal to Proteasome 26S S3/PSMD3
Host species	Rabbit
Tested applications	Suitable for: WB, IP
Species reactivity	Reacts with: Mouse, Human Predicted to work with: Rat, Rabbit, Horse, Guinea pig, Cow, Dog, Chimpanzee, Ferret, Rhesus monkey, Gorilla, Chinese hamster 
Immunogen	Synthetic peptide corresponding to Human Proteasome 26S S3/PSMD3 aa 1-100. Database link: O43242  Run BLAST with  Run BLAST with
Positive control	Recombinant Human Proteasome 26S S3/PSMD3 protein (ab117003) can be used as a positive control in WB. 293T, HeLa, Jurkat and NIH 3T3 whole cell lysates.
General notes	<p>The Life Science industry has been in the grips of a reproducibility crisis for a number of years. Abcam is leading the way in addressing this with our range of recombinant monoclonal antibodies and knockout edited cell lines for gold-standard validation. Please check that this product meets your needs before purchasing.</p> <p>If you have any questions, special requirements or concerns, please send us an inquiry and/or contact our Support team ahead of purchase. Recommended alternatives for this product can be found below, along with publications, customer reviews and Q&As</p>

Properties

Form	Liquid
Storage instructions	Shipped at 4°C. Store at +4°C.
Storage buffer	pH: 7 Preservative: 0.09% Sodium azide Constituent: 99% Tris citrate/phosphate
Purity	pH 7-8 Immunogen affinity purified
Purification notes	ab140440 was affinity purified using an epitope specific to Proteasome 26S S3/PSMD3

immobilized on solid support.

Clonality

Polyclonal

Isotype

IgG

Applications

The Abpromise guarantee

Our **Abpromise guarantee** covers the use of ab140440 in the following tested applications.

The application notes include recommended starting dilutions; optimal dilutions/concentrations should be determined by the end user.

Application	Abreviews	Notes
WB	★★★★★ (2)	1/2000 - 1/10000. Predicted molecular weight: 61 kDa.
IP		Use at 2-10 µg/mg of lysate.

Target

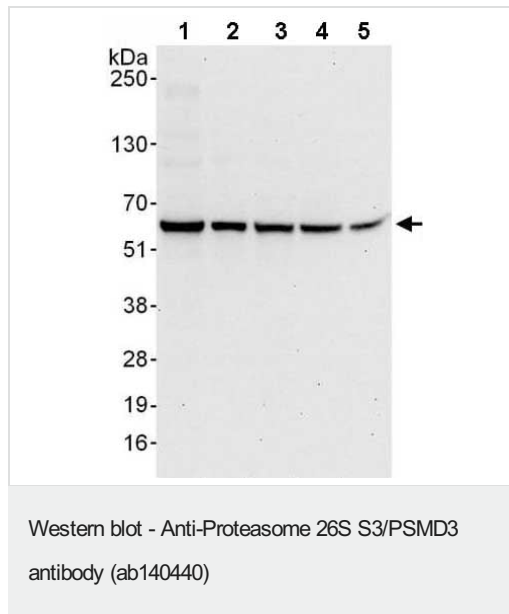
Function

Acts as a regulatory subunit of the 26 proteasome which is involved in the ATP-dependent degradation of ubiquitinated proteins.

Sequence similarities

Belongs to the proteasome subunit S3 family.
Contains 1 PCI domain.

Images



All lanes : Anti-Proteasome 26S S3/PSMD3 antibody (ab140440) at 0.1 µg/ml

Lane 1 : 293T whole cell lysate at 50 µg

Lane 2 : 293T whole cell lysate at 15 µg

Lane 3 : HeLa whole cell lysate at 50 µg

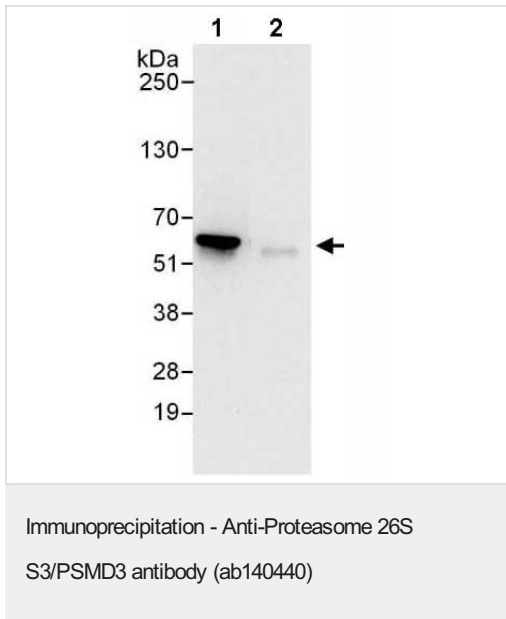
Lane 4 : Jurkat whole cell lysate at 50 µg

Lane 5 : NIH3T3 whole cell lysate at 50 µg

Developed using the ECL technique.

Predicted band size: 61 kDa

Exposure time: 30 seconds



Detection of Proteasome 26S S3/PSMD3 in Immunoprecipitates of 293T whole cell lysates (1 mg for IP, 20% of IP loaded) using **ab140428** at 6 µg/mg lysate for IP and 0.4µg/ml for WB detection (Lane 1). Lane 2 represents control IgG IP. Detection: Chemiluminescence with an exposure time of 10 seconds.

Please note: All products are "FOR RESEARCH USE ONLY. NOT FOR USE IN DIAGNOSTIC PROCEDURES"

Our Abpromise to you: Quality guaranteed and expert technical support

- Replacement or refund for products not performing as stated on the datasheet
- Valid for 12 months from date of delivery
- Response to your inquiry within 24 hours
- We provide support in Chinese, English, French, German, Japanese and Spanish
- Extensive multi-media technical resources to help you
- We investigate all quality concerns to ensure our products perform to the highest standards

If the product does not perform as described on this datasheet, we will offer a refund or replacement. For full details of the Abpromise, please visit <https://www.abcam.com/abpromise> or contact our technical team.

Terms and conditions

- Guarantee only valid for products bought direct from Abcam or one of our authorized distributors