



Product datasheet

Anti-Protein CASP antibody [2A10] - BSA and Azide free ab54583

★★★★★ [9 Abreviews](#) [22 References](#) [7 Images](#)

Overview

Product name	Anti-Protein CASP antibody [2A10] - BSA and Azide free
Description	Mouse monoclonal [2A10] to Protein CASP - BSA and Azide free
Host species	Mouse
Tested applications	Suitable for: IHC-P, WB, ICC/IF, Sandwich ELISA, Flow Cyt
Species reactivity	Reacts with: Human, Recombinant fragment
Immunogen	Recombinant fragment (GST-tag) corresponding to Human Protein CASP aa 500-650. NP_001904.2 Database link: Q13948
	 Run BLAST with  Run BLAST with
Positive control	ICC/IF: HeLa cells. IHC-P: Human spleen tissue; human malignant lymphoma, diffuse large B tissue. Flow Cytometry: MCF7 cells. WB: Protein CASP transfected HEK-293T cell lysate. Recombinant Protein CASP protein.
General notes	<p>This product was changed from ascites to tissue culture supernatant on 13th Feb 2019. Please note that the dilutions may need to be adjusted accordingly. If you have any questions, please do not hesitate to contact our scientific support team.</p> <p>The Life Science industry has been in the grips of a reproducibility crisis for a number of years. Abcam is leading the way in addressing this with our range of recombinant monoclonal antibodies and knockout edited cell lines for gold-standard validation. Please check that this product meets your needs before purchasing.</p> <p>If you have any questions, special requirements or concerns, please send us an inquiry and/or contact our Support team ahead of purchase. Recommended alternatives for this product can be found below, along with publications, customer reviews and Q&As</p>

Properties

Form	Liquid
Storage instructions	Shipped at 4°C. Upon delivery aliquot and store at -20°C or -80°C. Avoid repeated freeze / thaw cycles.
Storage buffer	pH: 7.40 Constituent: PBS

Carrier free	Yes
Purity	Tissue culture supernatant
Clonality	Monoclonal
Clone number	2A10
Isotype	IgG1
Light chain type	kappa

Applications

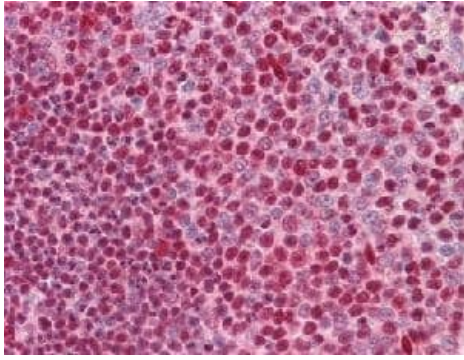
The Abpromise guarantee Our **Abpromise guarantee** covers the use of ab54583 in the following tested applications. The application notes include recommended starting dilutions; optimal dilutions/concentrations should be determined by the end user.

Application	Abreviews	Notes
IHC-P	★★★★★ (1)	Use at an assay dependent concentration.
WB	★☆☆☆☆ (1)	Use at an assay dependent concentration. Predicted molecular weight: 77.5 kDa.
ICC/IF	★★★★★ (3)	Use at an assay dependent concentration.
Sandwich ELISA		Use at an assay dependent concentration.
Flow Cyt		Use at an assay dependent concentration. ab170190 - Mouse monoclonal IgG1, is suitable for use as an isotype control with this antibody.

Target

Function	May be involved in intra-Golgi retrograde transport.
Sequence similarities	Belongs to the CASP family.
Cellular localization	Golgi apparatus membrane.

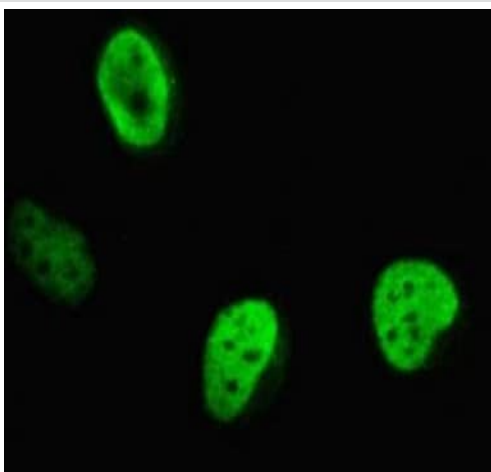
Images



Immunohistochemistry (Formalin/PFA-fixed paraffin-embedded sections) - Anti-Protein CASP antibody [2A10] - BSA and Azide free (ab54583)

Formalin-fixed, paraffin-embedded human spleen tissue stained for Protein CASP with ab54583 at 5 µg/ml in immunohistochemical analysis.

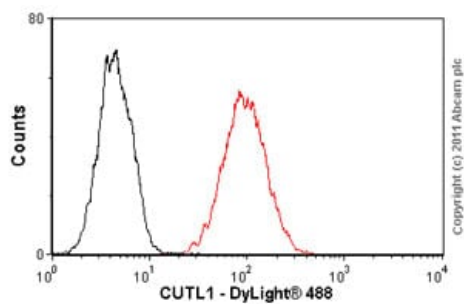
This image was generated using the ascites version of the product.



Immunocytochemistry/ Immunofluorescence - Anti-Protein CASP antibody [2A10] - BSA and Azide free (ab54583)

HeLa (human epithelial cell line from cervix adenocarcinoma) cells stained for Protein CASP (green) using ab54583 at 10 µg/ml in ICC/IF.

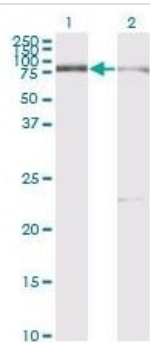
This image was generated using the ascites version of the product.



Flow Cytometry - Anti-Protein CASP antibody [2A10] - BSA and Azide free (ab54583)

Overlay histogram showing MCF7 (human breast adenocarcinoma cell line) cells stained with ab54583 (red line). The cells were fixed with 80% methanol (5 minutes) and then permeabilized with 0.1% PBS-Tween for 20 minutes. The cells were then incubated in 1x PBS / 10% normal goat serum / 0.3 M glycine to block non-specific protein-protein interactions followed by the antibody (ab54583, 1 µg/1 x 10⁶ cells) for 30 minutes at 22°C. The secondary antibody used was DyLight® 488 goat anti-mouse IgG (H+L) ([ab96879](#)) at 1/500 dilution for 30 minutes at 22°C. Isotype control antibody (black line) was mouse IgG1 [ICIGG1] ([ab91353](#), 2 µg/1 x 10⁶ cells) used under the same conditions. Acquisition of >5,000 events was performed. This antibody gave a positive signal in MCF7 cells fixed with 4% paraformaldehyde (10 minutes)/permeabilized in 0.1% PBS-Tween used under the same conditions.

This image was generated using the ascites version of the product.



Western blot - Anti-Protein CASP antibody [2A10] - BSA and Azide free (ab54583)

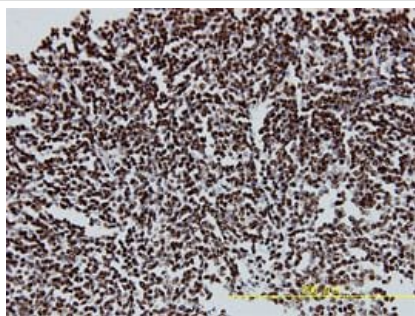
All lanes : Anti-Protein CASP antibody [2A10] - BSA and Azide free (ab54583) at 5 µg/ml

Lane 1 : Protein CASP transfected HEK-293T (human epithelial cell line from embryonic kidney transformed with large T antigen) cell lysate

Lane 2 : Non-transfected HEK-293T (human epithelial cell line from embryonic kidney transformed with large T antigen) cell lysate

Predicted band size: 77.5 kDa

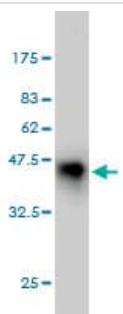
This image was generated using the ascites version of the product.



Immunohistochemistry (Formalin/PFA-fixed paraffin-embedded sections) - Anti-Protein CASP antibody [2A10] - BSA and Azide free (ab54583)

Formalin-fixed, paraffin-embedded human malignant lymphoma, diffuse large B tissue stained for Protein CASP with ab54583 at 5 µg/ml in immunohistochemical analysis.

This image was generated using the ascites version of the product.



Western blot - Anti-Protein CASP antibody [2A10] - BSA and Azide free (ab54583)

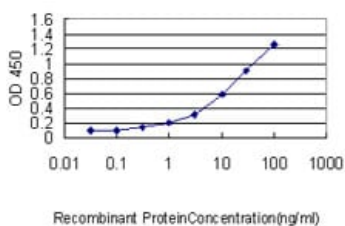
Anti-Protein CASP antibody [2A10] - BSA and Azide free (ab54583) at 5 µg/ml + Tagged recombinant Protein CASP protein

Predicted band size: 77.5 kDa

This antibody has only been tested in WB against the recombinant fragment used as immunogen. We have no data on the detection of endogenous protein.

Expected MW 38 kDa.

This image was generated using the ascites version of the product.



Detection limit of ab54583 is approximately 0.03 ng/ml as a capture antibody.

This image was generated using the ascites version of the product.

Sandwich ELISA - Anti-Protein CASP antibody
[2A10] - BSA and Azide free (ab54583)

Please note: All products are "FOR RESEARCH USE ONLY. NOT FOR USE IN DIAGNOSTIC PROCEDURES"

Our Abpromise to you: Quality guaranteed and expert technical support

- Replacement or refund for products not performing as stated on the datasheet
- Valid for 12 months from date of delivery
- Response to your inquiry within 24 hours
- We provide support in Chinese, English, French, German, Japanese and Spanish
- Extensive multi-media technical resources to help you
- We investigate all quality concerns to ensure our products perform to the highest standards

If the product does not perform as described on this datasheet, we will offer a refund or replacement. For full details of the Abpromise, please visit <https://www.abcam.com/abpromise> or contact our technical team.

Terms and conditions

- Guarantee only valid for products bought direct from Abcam or one of our authorized distributors