


Product datasheet

Anti-PROX1 antibody ab38692

★★★★★ [8 Abreviews](#) [13 References](#) [1 Image](#)

Overview

Product name	Anti-PROX1 antibody
Description	Rabbit polyclonal to PROX1
Host species	Rabbit
Specificity	We have had mixed results for use of this antibody in IHC-P. The AbReview below from an external researcher reports good staining with this antibody with human heart tissue, but we have had mixed results with this antibody in internal QC testing in IHC-P. We welcome any feedback from customers who have used this antibody in IHC-P.
Tested applications	Suitable for: WB
Species reactivity	Reacts with: Human Predicted to work with: Mouse, Rat 
Immunogen	Synthetic peptide corresponding to Human PROX1 aa 150-250 conjugated to keyhole limpet haemocyanin. (Peptide available as ab38691)
Positive control	WB: HepG2, SHSY5Y whole cell lysates
General notes	<p>The Life Science industry has been in the grips of a reproducibility crisis for a number of years. Abcam is leading the way in addressing this with our range of recombinant monoclonal antibodies and knockout edited cell lines for gold-standard validation. Please check that this product meets your needs before purchasing.</p> <p>If you have any questions, special requirements or concerns, please send us an inquiry and/or contact our Support team ahead of purchase. Recommended alternatives for this product can be found below, along with publications, customer reviews and Q&As</p>

Properties

Form	Liquid
Storage instructions	Shipped at 4°C. Store at +4°C short term (1-2 weeks). Upon delivery aliquot. Store at -20°C or -80°C. Avoid freeze / thaw cycle.
Storage buffer	pH: 7.40 Preservative: 0.02% Sodium azide Constituent: PBS

Batches of this product that have a concentration < 1mg/ml may have BSA added as a stabilising agent. If you would like information about the formulation of a specific lot, please contact our scientific support team who will be happy to help.

Purity	Immunogen affinity purified
Clonality	Polyclonal
Isotype	IgG

Applications

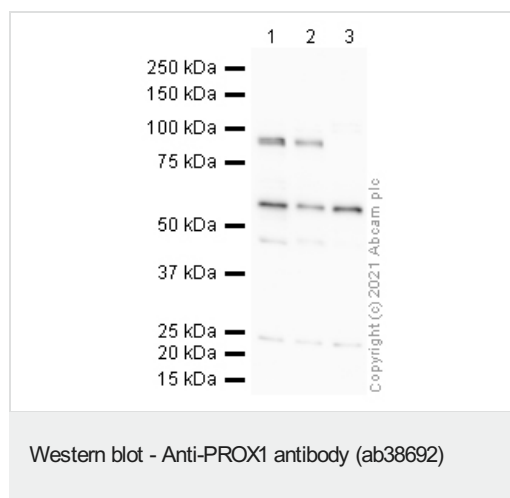
The Abpromise guarantee Our **Abpromise guarantee** covers the use of ab38692 in the following tested applications. The application notes include recommended starting dilutions; optimal dilutions/concentrations should be determined by the end user.

Application	Abreviews	Notes
WB	★★★★★ (2)	Use a concentration of 2 µg/ml. Detects a band of approximately 105 kDa (predicted molecular weight: 83 kDa).

Target

Function	Transcription factor involved in developmental processes such as cell fate determination, gene transcriptional regulation and progenitor cell regulation in a number of organs. Plays a critical role in embryonic development and functions as a key regulatory protein in neurogenesis and the development of the heart, eye lens, liver, pancreas and the lymphatic system. Involved in the regulation of the circadian rhythm. Represses: transcription of the retinoid-related orphan receptor RORγ, transcriptional activator activity of RORα and RORγ and the expression of RORα/G-target genes including core clock components: ARNTL/BMAL1, NPAS2 and CRY1 and metabolic genes: AVPR1A and ELOVL3.
Tissue specificity	Most actively expressed in the developing lens. Detected also in embryonic brain, lung, liver and kidney. In adult, it is more abundant in heart and liver than in brain, skeletal muscle, kidney and pancreas.
Sequence similarities	Belongs to the Prospero homeobox family. Contains 1 Prospero-type homeobox DNA-binding domain.
Domain	The prospero-type homeobox DNA-binding domain is essential for repression of RORγ transcriptional activator activity.
Cellular localization	Nucleus. RORγ promotes its nuclear localization.
Form	Prox1 is a specific and required regulator of the development of the lymphatic system and that the vascular and lymphatic systems develop independently. Sox18 directly activates Prox1 transcription by binding to its proximal promoter.

Images



All lanes : Anti-PROX1 antibody (ab38692) at 1 µg/ml

Lane 1 : HepG2 whole cell lysate

Lane 2 : SHSY5Y whole cell lysate

Lane 3 : Hek293 whole cell lysate

Lysates/proteins at 10 µg per lane.

Secondary

All lanes : Goat polyclonal to Rabbit IgG - H&L - Pre-Adsorbed (HRP) at 1/50000 dilution

Predicted band size: 83 kDa

Observed band size: 95 kDa

Exposure time: 12 minutes

Gel type: MOPS

Blocking buffer: 3% milk

Please note: All products are "FOR RESEARCH USE ONLY. NOT FOR USE IN DIAGNOSTIC PROCEDURES"

Our Abpromise to you: Quality guaranteed and expert technical support

- Replacement or refund for products not performing as stated on the datasheet
- Valid for 12 months from date of delivery
- Response to your inquiry within 24 hours
- We provide support in Chinese, English, French, German, Japanese and Spanish
- Extensive multi-media technical resources to help you
- We investigate all quality concerns to ensure our products perform to the highest standards

If the product does not perform as described on this datasheet, we will offer a refund or replacement. For full details of the Abpromise, please visit <https://www.abcam.com/abpromise> or contact our technical team.

Terms and conditions

- Guarantee only valid for products bought direct from Abcam or one of our authorized distributors