

Anti-PRRG2 antibody ab228870

[2 Images](#)

Overview

Product name	Anti-PRRG2 antibody
Description	Rabbit polyclonal to PRRG2
Host species	Rabbit
Tested applications	Suitable for: IHC-P, WB
Species reactivity	Reacts with: Rat, Human
Immunogen	Recombinant fragment within Human PRRG2 (internal sequence). The exact sequence is proprietary. Database link: O14669
Positive control	WB: NCI-H1299, HCT 116 and A549 whole cell extract; A549 membrane extract. IHC-P: Rat thyroid gland tissue.
General notes	<p>The Life Science industry has been in the grips of a reproducibility crisis for a number of years. Abcam is leading the way in addressing this with our range of recombinant monoclonal antibodies and knockout edited cell lines for gold-standard validation. Please check that this product meets your needs before purchasing.</p> <p>If you have any questions, special requirements or concerns, please send us an inquiry and/or contact our Support team ahead of purchase. Recommended alternatives for this product can be found below, along with publications, customer reviews and Q&As</p>

Properties

Form	Liquid
Storage instructions	Shipped at 4°C. Store at +4°C short term (1-2 weeks). Upon delivery aliquot. Store at -20°C long term. Avoid freeze / thaw cycle.
Storage buffer	pH: 7.00 Preservative: 0.01% Thimerosal (merthiolate) Constituents: 1.21% Tris, 0.75% Glycine, 20% Glycerol (glycerin, glycerine)
Purity	Immunogen affinity purified
Clonality	Polyclonal
Isotype	IgG

Applications

The Abpromise guarantee

Our **Abpromise guarantee** covers the use of ab228870 in the following tested applications.

The application notes include recommended starting dilutions; optimal dilutions/concentrations should be determined by the end user.

Application	Abreviews	Notes
IHC-P		1/100 - 1/1000.
WB		1/500 - 1/3000. Predicted molecular weight: 22 kDa.

Target

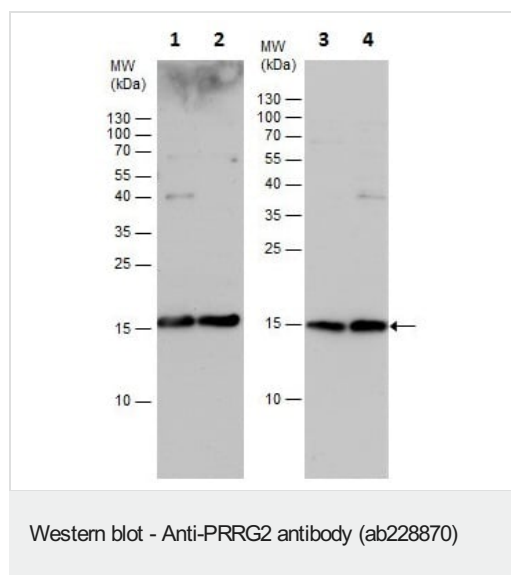
Relevance

PRRG2 interacts with NEDD4 and is highly expressed in the thyroid.

Cellular localization

Cell Membrane; Single-pass type I membrane protein.

Images



All lanes : Anti-PRRG2 antibody (ab228870) at 1/1000 dilution

Lane 1 : NCI-H1299 (human lung carcinoma cell line) whole cell extract

Lane 2 : HCT 116 (human colorectal carcinoma cell line) whole cell extract

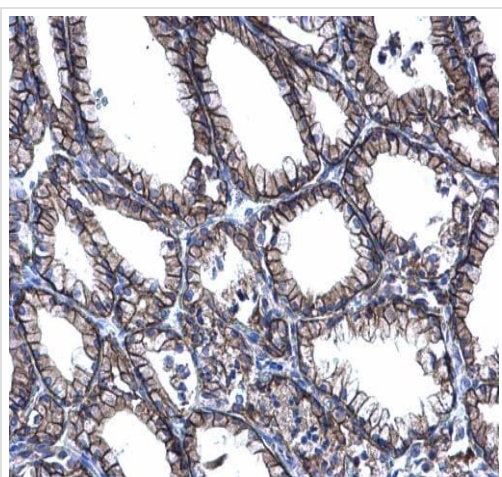
Lane 3 : A549 (human lung carcinoma cell line) whole cell extract

Lane 4 : A549 membrane extract

Lysates/proteins at 30 µg per lane.

Predicted band size: 22 kDa

15% SDS-PAGE gel.



Paraffin-embedded rat thyroid gland tissue stained for PRRG2 with ab228870 at 1/500 dilution in immunohistochemical analysis.

Immunohistochemistry (Formalin/PFA-fixed paraffin-embedded sections) - Anti-PRRG2 antibody (ab228870)

Please note: All products are "FOR RESEARCH USE ONLY. NOT FOR USE IN DIAGNOSTIC PROCEDURES"

Our Abpromise to you: Quality guaranteed and expert technical support

- Replacement or refund for products not performing as stated on the datasheet
- Valid for 12 months from date of delivery
- Response to your inquiry within 24 hours
- We provide support in Chinese, English, French, German, Japanese and Spanish
- Extensive multi-media technical resources to help you
- We investigate all quality concerns to ensure our products perform to the highest standards

If the product does not perform as described on this datasheet, we will offer a refund or replacement. For full details of the Abpromise, please visit <https://www.abcam.com/abpromise> or contact our technical team.

Terms and conditions

- Guarantee only valid for products bought direct from Abcam or one of our authorized distributors