

Product datasheet

Anti-PRSS8 antibody ab200736

1 Image

Overview

Product name	Anti-PRSS8 antibody
Description	Rabbit polyclonal to PRSS8
Host species	Rabbit
Tested applications	Suitable for: WB
Species reactivity	Reacts with: Mouse, Rat, Human
Immunogen	Synthetic peptide corresponding to Human PRSS8 aa 1-100. Database link: Q16651 Run BLAST with Run BLAST with
Positive control	HEK293T, RAW 264.7 and PC12 whole cell lysates.
General notes	<p>The Life Science industry has been in the grips of a reproducibility crisis for a number of years. Abcam is leading the way in addressing this with our range of recombinant monoclonal antibodies and knockout edited cell lines for gold-standard validation. Please check that this product meets your needs before purchasing.</p> <p>If you have any questions, special requirements or concerns, please send us an inquiry and/or contact our Support team ahead of purchase. Recommended alternatives for this product can be found below, along with publications, customer reviews and Q&As</p>

Properties

Form	Liquid
Storage instructions	Shipped at 4°C. Store at +4°C short term (1-2 weeks). Upon delivery aliquot. Store at -20°C long term. Avoid freeze / thaw cycle.
Storage buffer	pH: 7.20 Preservative: 0.0975% Sodium azide Constituent: 99% PBS
Purity	Immunogen affinity purified
Purification notes	Purity is > 95% (by SDS-PAGE).
Clonality	Polyclonal
Isotype	IgG

Applications

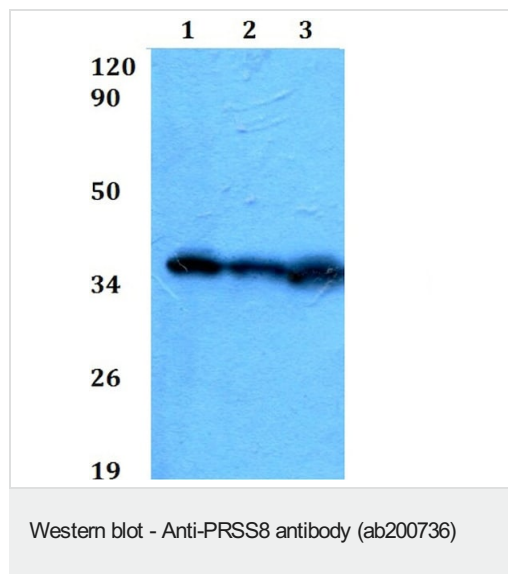
The Abpromise guarantee Our **Abpromise guarantee** covers the use of ab200736 in the following tested applications. The application notes include recommended starting dilutions; optimal dilutions/concentrations should be determined by the end user.

Application	Abreviews	Notes
WB		1/500. Predicted molecular weight: 36 kDa.

Target

Function	Possesses a trypsin-like cleavage specificity.
Tissue specificity	Found in prostate, liver, salivary gland, kidney, lung, pancreas, colon, bronchus and renal proximal tubular cells. In the prostate gland it may be synthesized in epithelial cells, secreted into the ducts, and excreted into the seminal fluid.
Sequence similarities	Belongs to the peptidase S1 family. Contains 1 peptidase S1 domain.
Cellular localization	Cell membrane and Secreted > extracellular space. Found in the seminal fluid. Secreted after cleavage of its C-terminus.

Images



All lanes : Anti-PRSS8 antibody (ab200736)

Lane 1 : HEK293T whole cell lysate

Lane 2 : RAW 264.7 whole cell lysate

Lane 3 : PC12 whole cell lysate

Predicted band size: 36 kDa

Please note: All products are "FOR RESEARCH USE ONLY. NOT FOR USE IN DIAGNOSTIC PROCEDURES"

Our Abpromise to you: Quality guaranteed and expert technical support

- Replacement or refund for products not performing as stated on the datasheet
- Valid for 12 months from date of delivery
- Response to your inquiry within 24 hours

- We provide support in Chinese, English, French, German, Japanese and Spanish
- Extensive multi-media technical resources to help you
- We investigate all quality concerns to ensure our products perform to the highest standards

If the product does not perform as described on this datasheet, we will offer a refund or replacement. For full details of the Abpromise, please visit <https://www.abcam.com/abpromise> or contact our technical team.

Terms and conditions

- Guarantee only valid for products bought direct from Abcam or one of our authorized distributors