

Product datasheet

Anti-PRUNE antibody ab88613

★★★★★ [2 Abreviews](#) [2 References](#) [4 Images](#)

Overview

Product name	Anti-PRUNE antibody
Description	Mouse polyclonal to PRUNE
Host species	Mouse
Tested applications	Suitable for: WB, ICC/IF
Species reactivity	Reacts with: Mouse, Human
Immunogen	Recombinant full length protein within Human PRUNE. The exact immunogen sequence used to generate this antibody is proprietary information. If additional detail on the immunogen is needed to determine the suitability of the antibody for your needs, please contact our Scientific Support team to discuss your requirements.
Positive control	WB: Raw 264.7 cell lysate, NIH/3T3 cell lysate, and PRUNE transfected 293T cell lysate ICC/IF: HeLa cell
General notes	<p>The Life Science industry has been in the grips of a reproducibility crisis for a number of years. Abcam is leading the way in addressing this with our range of recombinant monoclonal antibodies and knockout edited cell lines for gold-standard validation. Please check that this product meets your needs before purchasing.</p> <p>If you have any questions, special requirements or concerns, please send us an inquiry and/or contact our Support team ahead of purchase. Recommended alternatives for this product can be found below, along with publications, customer reviews and Q&As</p>

Properties

Form	Liquid
Storage instructions	Shipped at 4°C. Upon delivery aliquot and store at -20°C or -80°C. Avoid repeated freeze / thaw cycles.
Storage buffer	pH: 7.40 Constituent: 100% PBS
Purity	Protein A purified
Clonality	Polyclonal
Isotype	IgG

Applications

The Abpromise guarantee

Our **Abpromise guarantee** covers the use of ab88613 in the following tested applications.

The application notes include recommended starting dilutions; optimal dilutions/concentrations should be determined by the end user.

Application	Abreviews	Notes
WB		Use a concentration of 1 µg/ml. Predicted molecular weight: 50 kDa.
ICC/IF	★★★★★ (1)	Use a concentration of 10 µg/ml.

Target

Function

Phosphodiesterase (PDE) that has higher activity toward cAMP than cGMP, as substrate. Plays a role in cell proliferation, is able to induce cell motility and acts as a negative regulator of NME1.

Tissue specificity

Ubiquitously expressed. Seems to be overexpressed in aggressive sarcoma subtypes, such as leiomyosarcomas and malignant fibrous histiocytomas (MFH) as well as in the less malignant liposarcomas.

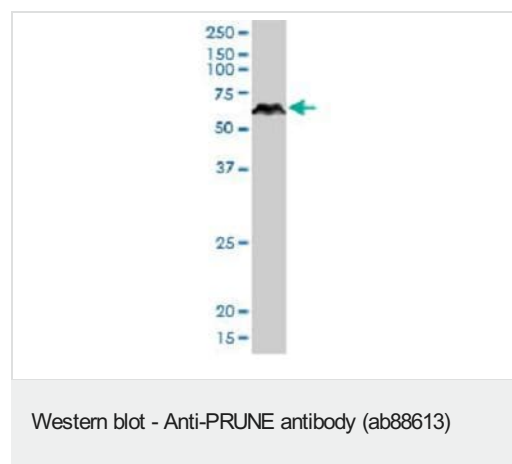
Sequence similarities

Belongs to the PPase class C family. Prune subfamily.

Cellular localization

Cytoplasm. Nucleus. Cell junction > focal adhesion. In some transfected cells a nuclear staining is also observed.

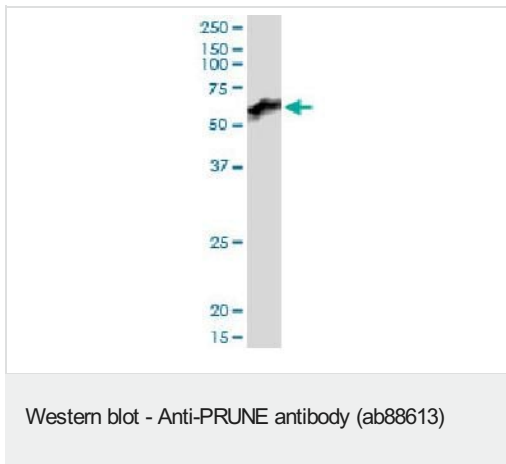
Images



Anti-PRUNE antibody (ab88613) at 1 µg/ml + Raw 264.7 cell lysate at 50 µg

Predicted band size: 50 kDa

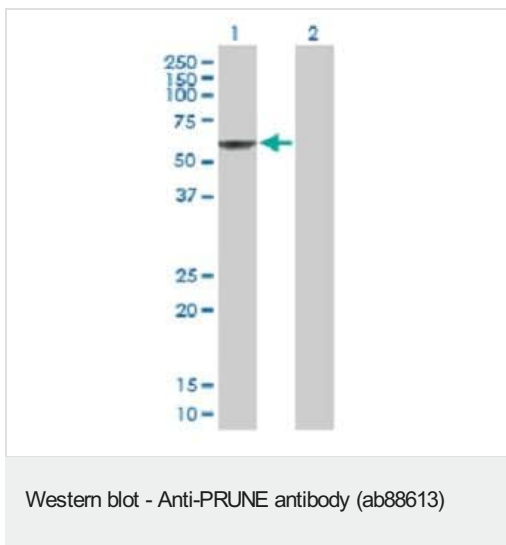
Observed band size: 60 kDa



Anti-PRUNE antibody (ab88613) at 1 µg/ml + NIH/3T3 cell lysate at 50 µg

Predicted band size: 50 kDa

Observed band size: 60 kDa



All lanes : Anti-PRUNE antibody (ab88613) at 1 µg/ml

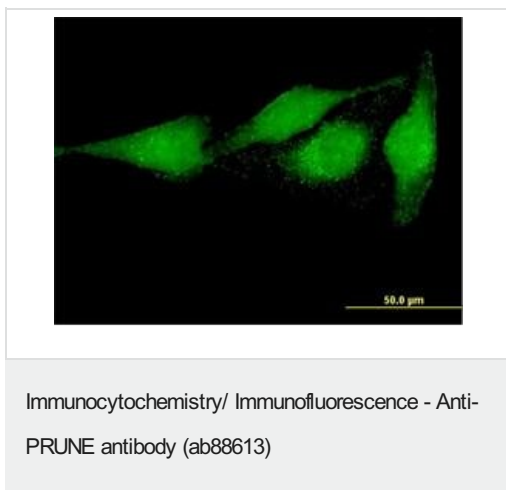
Lane 1 : PRUNE transfected 293T cell lysate

Lane 2 : Non transfected 293T cell lysate

Lysates/proteins at 25 µg per lane.

Predicted band size: 50 kDa

Observed band size: 60 kDa



ab88613, at 10 µg/ml, staining PRUNE in HeLa cell by Immunofluorescence.

Please note: All products are "FOR RESEARCH USE ONLY. NOT FOR USE IN DIAGNOSTIC PROCEDURES"

Our Abpromise to you: Quality guaranteed and expert technical support

- Replacement or refund for products not performing as stated on the datasheet
- Valid for 12 months from date of delivery
- Response to your inquiry within 24 hours

- We provide support in Chinese, English, French, German, Japanese and Spanish
- Extensive multi-media technical resources to help you
- We investigate all quality concerns to ensure our products perform to the highest standards

If the product does not perform as described on this datasheet, we will offer a refund or replacement. For full details of the Abpromise, please visit <https://www.abcam.com/abpromise> or contact our technical team.

Terms and conditions

- Guarantee only valid for products bought direct from Abcam or one of our authorized distributors