




## Product datasheet

### Anti-PSMB4 antibody ab166792

★★★★★ [1 Abreviews](#) [2 References](#) [2 Images](#)

#### Overview

Product name	Anti-PSMB4 antibody
Description	Goat polyclonal to PSMB4
Host species	Goat
Tested applications	<b>Suitable for:</b> WB, IHC-P
Species reactivity	<b>Reacts with:</b> Human <b>Predicted to work with:</b> Mouse, Rat, Rabbit, Hamster, Cow, Dog, Pig, Monkey, Gorilla 
Immunogen	Synthetic peptide corresponding to Human PSMB4 aa 233-243 (internal sequence) (Cysteine residue). Sequence: QIATVTEKGVE  Database link: <a href="#">P28070</a> <div>  <a href="#">Run BLAST with</a>  <a href="#">Run BLAST with</a> </div>

#### General notes

The Life Science industry has been in the grips of a reproducibility crisis for a number of years. Abcam is leading the way in addressing this with our range of recombinant monoclonal antibodies and knockout edited cell lines for gold-standard validation. Please check that this product meets your needs before purchasing.

If you have any questions, special requirements or concerns, please send us an inquiry and/or contact our Support team ahead of purchase. Recommended alternatives for this product can be found below, along with publications, customer reviews and Q&As

#### Properties

Form	Liquid
Storage instructions	Shipped at 4°C. Upon delivery aliquot and store at -20°C. Avoid freeze / thaw cycles.
Storage buffer	pH: 7.30 Preservative: 0.02% Sodium azide Constituents: 0.5% BSA, 99% Tris buffered saline
Purity	Immunogen affinity purified
Clonality	Polyclonal
Isotype	IgG

## Applications

### The Abpromise guarantee

Our **Abpromise guarantee** covers the use of ab166792 in the following tested applications.

The application notes include recommended starting dilutions; optimal dilutions/concentrations should be determined by the end user.

Application	Abreviews	Notes
WB		Use a concentration of 0.3 - 1 µg/ml. Detects a band of approximately 25 kDa (predicted molecular weight: 29 kDa).
IHC-P		Use a concentration of 3.75 µg/ml.

## Target

### Function

The proteasome is a multicatalytic proteinase complex which is characterized by its ability to cleave peptides with Arg, Phe, Tyr, Leu, and Glu adjacent to the leaving group at neutral or slightly basic pH. The proteasome has an ATP-dependent proteolytic activity. Mediates the lipopolysaccharide-induced signal macrophage proteasome (By similarity). SMAD1/OAZ1/PSMB4 complex mediates the degradation of the CREBBP/EP300 repressor SNIP1.

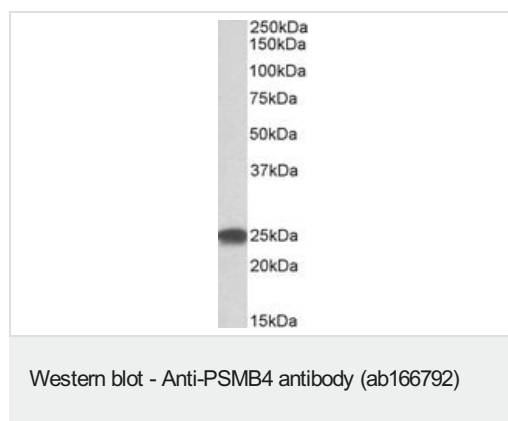
### Sequence similarities

Belongs to the peptidase T1B family.

### Cellular localization

Cytoplasm. Nucleus.

## Images



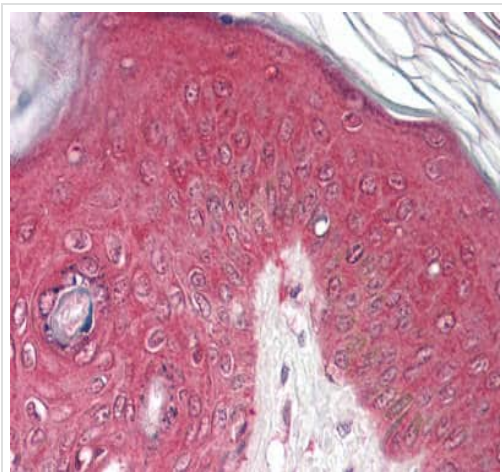
Anti-PSMB4 antibody (ab166792) at 0.3 µg/ml + HEK293 cell lysate (in RIPA buffer) at 35 µg

Developed using the ECL technique.

**Predicted band size:** 29 kDa

**Observed band size:** 25 kDa

Primary incubation: 1 hour.



Immunohistochemical analysis of formalin-fixed, paraffin-embedded Human skin tissue labeling PSMB4 with ab166792 at 3.75 µg/ml.

Immunohistochemistry (Formalin/PFA-fixed paraffin-embedded sections) - Anti-PSMB4 antibody (ab166792)

**Please note:** All products are "FOR RESEARCH USE ONLY. NOT FOR USE IN DIAGNOSTIC PROCEDURES"

### Our Abpromise to you: Quality guaranteed and expert technical support

---

- Replacement or refund for products not performing as stated on the datasheet
- Valid for 12 months from date of delivery
- Response to your inquiry within 24 hours
- We provide support in Chinese, English, French, German, Japanese and Spanish
- Extensive multi-media technical resources to help you
- We investigate all quality concerns to ensure our products perform to the highest standards

If the product does not perform as described on this datasheet, we will offer a refund or replacement. For full details of the Abpromise, please visit <https://www.abcam.com/abpromise> or contact our technical team.

### Terms and conditions

---

- Guarantee only valid for products bought direct from Abcam or one of our authorized distributors