


Product datasheet

Anti-PSMD14 antibody [EPR4257] ab109123

Recombinant RabMAb

★★★★★ [2 Abreviews](#) [4 References](#) [4 Images](#)

Overview

Product name	Anti-PSMD14 antibody [EPR4257]
Description	Rabbit monoclonal [EPR4257] to PSMD14
Host species	Rabbit
Tested applications	Suitable for: WB, IHC-P, ICC/IF Unsuitable for: Flow Cyt or IP
Species reactivity	Reacts with: Human Predicted to work with: Mouse, Rat 
Immunogen	Synthetic peptide. This information is proprietary to Abcam and/or its suppliers.
Positive control	HepG2, A431, HeLa, Namalwa, K562 and MCF7 cell lysates; Human colon tissue; HeLa cells.
General notes	<p>This product is a recombinant monoclonal antibody, which offers several advantages including:</p> <ul style="list-style-type: none">- High batch-to-batch consistency and reproducibility- Improved sensitivity and specificity- Long-term security of supply- Animal-free production <p>For more information see here.</p> <p>Our RabMAb[®] technology is a patented hybridoma-based technology for making rabbit monoclonal antibodies. For details on our patents, please refer to RabMAb[®] patents.</p>

Properties

Form	Liquid
Storage instructions	Shipped at 4°C. Store at -20°C. Stable for 12 months at -20°C.
Storage buffer	pH: 7.20 Preservative: 0.05% Sodium azide Constituents: 0.1% BSA, 40% Glycerol (glycerin, glycerine), 9.85% Tris glycine, 50% Tissue culture supernatant
Purity	Protein A purified
Clonality	Monoclonal
Clone number	EPR4257

Isotype

IgG

Applications

The Abpromise guarantee

Our **Abpromise guarantee** covers the use of ab109123 in the following tested applications.

The application notes include recommended starting dilutions; optimal dilutions/concentrations should be determined by the end user.

Application	Abreviews	Notes
WB	★★★★★ (2)	1/1000 - 1/10000. Predicted molecular weight: 35 kDa.
IHC-P		1/500 - 1/1000. Perform heat mediated antigen retrieval before commencing with IHC staining protocol. (Heat to 98°C allow to cool for 10-20 min).
ICC/IF		1/500 - 1/1000.

Application notes

Is unsuitable for Flow Cyt or IP.

Target

Function

Metalloprotease component of the 26S proteasome that specifically cleaves 'Lys-63'-linked polyubiquitin chains. The 26S proteasome is involved in the ATP-dependent degradation of ubiquitinated proteins. The function of the 'Lys-63'-specific deubiquitination of the proteasome is unclear.

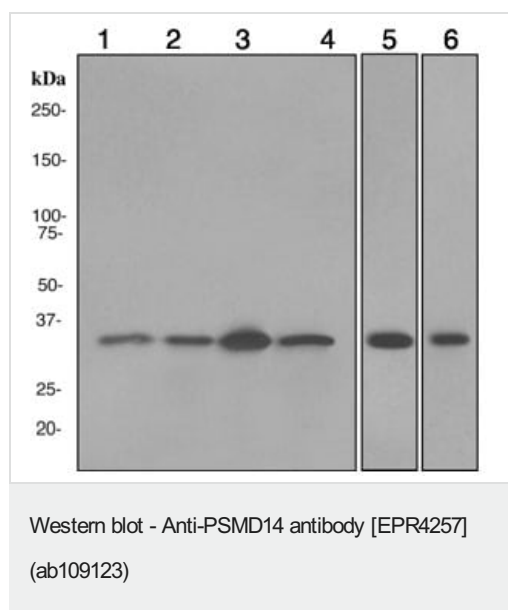
Tissue specificity

Widely expressed. Highest levels in heart and skeletal muscle.

Sequence similarities

Belongs to the peptidase M67A family. PSMD14 subfamily.
Contains 1 MPN (JAB/Mov34) domain.

Images



All lanes : Anti-PSMD14 antibody [EPR4257] (ab109123) at 1/1000 dilution

Lane 1 : Hep G2 (Human liver hepatocellular carcinoma cell line) whole cell lysate

Lane 2 : A-431 (Human epidermoid carcinoma cell line) whole cell lysate

Lane 3 : HeLa (Human cervix adenocarcinoma epithelial cell) whole cell lysate

Lane 4 : Namalwa (Burkitt's lymphoma cell line) whole cell lysates

Lane 5 : K-562 (Human chronic myelogenous leukemia lymphoblast cell line) whole cell lysate

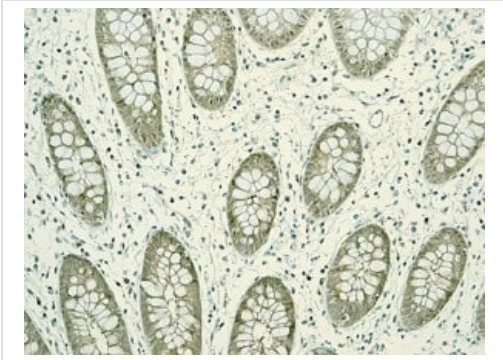
Lane 6 : MCF7 (Human breast adenocarcinoma cell line) whole cell lysate

Lysates/proteins at 10 µg per lane.

Secondary

All lanes : HRP labelled Goat anti-Rabbit at 1/2000 dilution

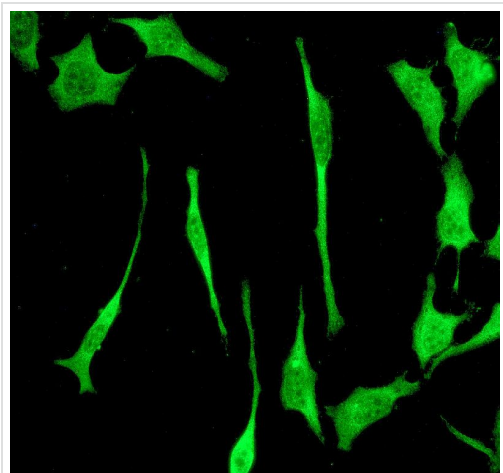
Predicted band size: 35 kDa



Immunohistochemistry (Formalin/PFA-fixed paraffin-embedded sections) - Anti-PSMD14 antibody [EPR4257] (ab109123)

ab109123, at 1/500 dilution staining PSMD14 in paraffin-embedded Human colon tissue, by Immunohistochemistry.

Perform heat mediated antigen retrieval before commencing with IHC staining protocol.



Immunocytochemistry/ Immunofluorescence - Anti-PSMD14 antibody [EPR4257] (ab109123)

ab109123, at 1/500 dilution, staining PSMD14 in HeLa cells by Immunofluorescence.

Why choose a recombinant antibody?



Research with confidence
Consistent and reproducible results



Long-term and scalable supply
Recombinant technology



Success from the first experiment
Confirmed specificity



Ethical standards compliant
Animal-free production

Anti-PSMD14 antibody [EPR4257] (ab109123)

Please note: All products are "FOR RESEARCH USE ONLY. NOT FOR USE IN DIAGNOSTIC PROCEDURES"

Our Abpromise to you: Quality guaranteed and expert technical support

- Replacement or refund for products not performing as stated on the datasheet
- Valid for 12 months from date of delivery
- Response to your inquiry within 24 hours
- We provide support in Chinese, English, French, German, Japanese and Spanish
- Extensive multi-media technical resources to help you
- We investigate all quality concerns to ensure our products perform to the highest standards

If the product does not perform as described on this datasheet, we will offer a refund or replacement. For full details of the Abpromise, please visit <https://www.abcam.com/abpromise> or contact our technical team.

Terms and conditions

- Guarantee only valid for products bought direct from Abcam or one of our authorized distributors