


## Product datasheet

### Anti-PSMD14 antibody [EPR4258] $\alpha$ b109130

Recombinant RabMAb

[2 References](#) [3 Images](#)

#### Overview

Product name	Anti-PSMD14 antibody [EPR4258]
Description	Rabbit monoclonal [EPR4258] to PSMD14
Host species	Rabbit
Tested applications	<b>Suitable for:</b> WB, IP <b>Unsuitable for:</b> Flow Cyt, ICC/IF or IHC-P
Species reactivity	<b>Reacts with:</b> Human <b>Predicted to work with:</b> Mouse, Rat 
Immunogen	Synthetic peptide. This information is proprietary to Abcam and/or its suppliers.
Positive control	WB: HepG2, A431, K562, Namalwa, HeLa, and MCF7 cell lysates. IP: K-562 cell lysate.
General notes	This product is a recombinant monoclonal antibody, which offers several advantages including: <ul style="list-style-type: none"> <li>- High batch-to-batch consistency and reproducibility</li> <li>- Improved sensitivity and specificity</li> <li>- Long-term security of supply</li> <li>- Animal-free production</li> </ul> For more information <a href="#">see here</a> . Our RabMAb <sup>®</sup> technology is a patented hybridoma-based technology for making rabbit monoclonal antibodies. For details on our patents, please refer to <a href="#">RabMAb<sup>®</sup> patents</a> .

#### Properties

Form	Liquid
Storage instructions	Shipped at 4°C. Store at -20°C. Stable for 12 months at -20°C.
Storage buffer	pH: 7.20 Preservative: 0.05% Sodium azide Constituents: 0.1% BSA, 40% Glycerol (glycerin, glycerine), 9.85% Tris glycine, 50% Tissue culture supernatant
Purity	Protein A purified
Clonality	Monoclonal
Clone number	EPR4258

Isotype

IgG

## Applications

### The Abpromise guarantee

Our **Abpromise guarantee** covers the use of ab109130 in the following tested applications.

The application notes include recommended starting dilutions; optimal dilutions/concentrations should be determined by the end user.

Application	Abreviews	Notes
WB		1/1000 - 1/10000. Detects a band of approximately 35 kDa (predicted molecular weight: 35 kDa).
IP		1/30.

### Application notes

Is unsuitable for Flow Cyt, ICC/IF or IHC-P.

## Target

### Function

Metalloprotease component of the 26S proteasome that specifically cleaves 'Lys-63'-linked polyubiquitin chains. The 26S proteasome is involved in the ATP-dependent degradation of ubiquitinated proteins. The function of the 'Lys-63'-specific deubiquitination of the proteasome is unclear.

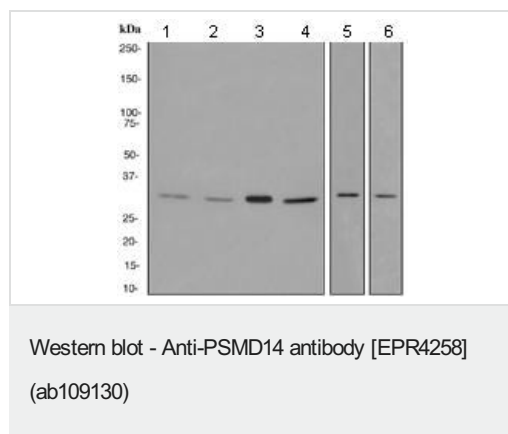
### Tissue specificity

Widely expressed. Highest levels in heart and skeletal muscle.

### Sequence similarities

Belongs to the peptidase M67A family. PSMD14 subfamily.  
Contains 1 MPN (JAB/Mov34) domain.

## Images



**All lanes :** Anti-PSMD14 antibody [EPR4258] (ab109130) at 1/1000 dilution

**Lane 1 :** HepG2 cell lysate

**Lane 2 :** A431 cell lysate

**Lane 3 :** K562 cell lysate

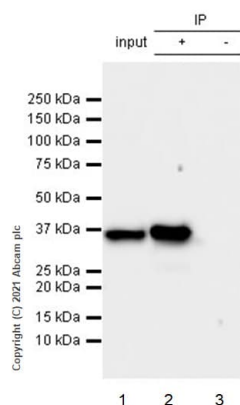
**Lane 4 :** Namalwa cell lysate

**Lane 5 :** HeLa cell lysate

**Lane 6 :** MCF7 cell lysate

Lysates/proteins at 10 µg per lane.

**Predicted band size:** 35 kDa



Immunoprecipitation - Anti-PSMD14 antibody  
[EPR4258] (ab109130)

PSMD14 was immunoprecipitated from 0.35 mg K-562 (Human chronic myelogenous leukemia lymphoblast) whole cell lysate 10 µg with 109130 at 1/50 dilution (2µg). VeriBlot for IP Detection Reagent (HRP)([ab131366](#)) was used at 1/5000 dilution.

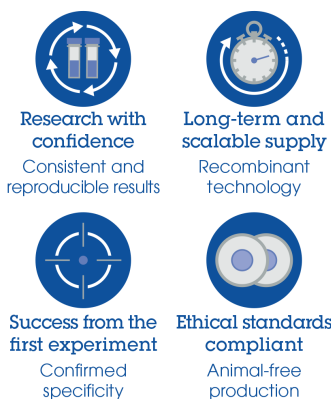
Lane 1: K-562 (Human chronic myelogenous leukemia lymphoblast) whole cell lysate 10 µg

Lane 2: ab109130 IP in K-562 whole cell lysate

Lane 3: Rabbit monoclonal IgG ([ab172730](#)) instead of ab109130 in K-562 whole cell lysate

Blocking and dilution buffer and concentration: 5% NFDM/TBST.

### Why choose a recombinant antibody?



Anti-PSMD14 antibody [EPR4258] (ab109130)

**Please note:** All products are "FOR RESEARCH USE ONLY. NOT FOR USE IN DIAGNOSTIC PROCEDURES"

### Our Abpromise to you: Quality guaranteed and expert technical support

- Replacement or refund for products not performing as stated on the datasheet
- Valid for 12 months from date of delivery
- Response to your inquiry within 24 hours
- We provide support in Chinese, English, French, German, Japanese and Spanish
- Extensive multi-media technical resources to help you
- We investigate all quality concerns to ensure our products perform to the highest standards

If the product does not perform as described on this datasheet, we will offer a refund or replacement. For full details of the Abpromise, please visit <https://www.abcam.com/abpromise> or contact our technical team.

## Terms and conditions

---

- Guarantee only valid for products bought direct from Abcam or one of our authorized distributors