

Product datasheet

Anti-Psoriasin antibody [47C1068] ab13680

★★★★★ [2 Abreviews](#) [25 References](#) [5 Images](#)

Overview

Product name	Anti-Psoriasin antibody [47C1068]
Description	Mouse monoclonal [47C1068] to Psoriasin
Host species	Mouse
Tested applications	Suitable for: IP, ICC/IF, Flow Cyt, IHC-Fr, Flow Cyt (Intra), WB, IHC-P
Species reactivity	Reacts with: Human
Immunogen	Recombinant full length protein corresponding to Human Psoriasin. Database link: P31151
Positive control	Confluent MCF10A cells.
General notes	<p>The Life Science industry has been in the grips of a reproducibility crisis for a number of years. Abcam is leading the way in addressing this with our range of recombinant monoclonal antibodies and knockout edited cell lines for gold-standard validation. Please check that this product meets your needs before purchasing.</p> <p>If you have any questions, special requirements or concerns, please send us an inquiry and/or contact our Support team ahead of purchase. Recommended alternatives for this product can be found below, along with publications, customer reviews and Q&As</p>

Properties

Form	Liquid
Storage instructions	Shipped at 4°C. Store at +4°C short term (1-2 weeks). Upon delivery aliquot. Store at -20°C or -80°C. Avoid freeze / thaw cycle.
Storage buffer	pH: 7.40 Preservative: 0.05% Sodium azide Constituents: PBS, 0.05% BSA
Purity	Protein G purified
Purification notes	This antibody is affinity purified.
Clonality	Monoclonal
Clone number	47C1068
Isotype	IgG1
Light chain type	kappa

Applications

The Abpromise guarantee Our **Abpromise guarantee** covers the use of ab13680 in the following tested applications.

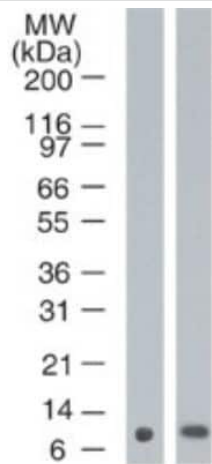
The application notes include recommended starting dilutions; optimal dilutions/concentrations should be determined by the end user.

Application	Abreviews	Notes
IP		Use at an assay dependent concentration.
ICC/IF		Use a concentration of 5 µg/ml.
Flow Cyt	★★★★★ (1)	Use at an assay dependent concentration. ab170190 - Mouse monoclonal IgG1, is suitable for use as an isotype control with this antibody.
IHC-Fr	★★★★★ (1)	Use at an assay dependent concentration. (PMID 18606705).
Flow Cyt (Intra)		Use at an assay dependent concentration.
WB		Use a concentration of 1 - 3 µg/ml. Detects a band of approximately 11 kDa (predicted molecular weight: 12.1 kDa).
IHC-P		Use at an assay dependent concentration. Perform heat mediated antigen retrieval before commencing with IHC staining protocol.

Target

Tissue specificity	Fetal ear, skin, and tongue and human cell lines. Highly up-regulated in psoriatic epidermis. Also highly expressed in the urine of bladder squamous cell carcinoma (SCC) bearing patients.
Sequence similarities	Belongs to the S-101 family. Contains 2 EF-hand domains.
Cellular localization	Cytoplasm. Secreted. Secreted by a non-classical secretory pathway.

Images



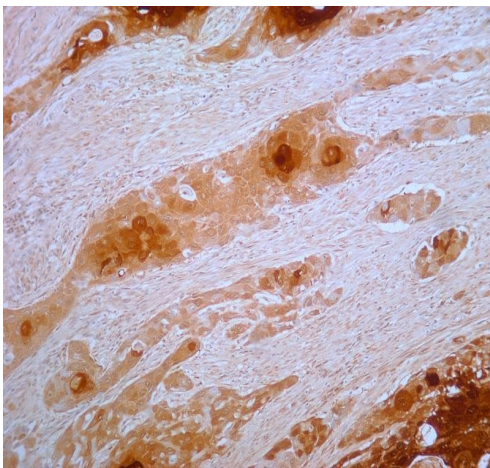
Western blot - Anti-Psoriasin antibody [47C1068]
(ab13680)

All lanes : Anti-Psoriasin antibody [47C1068] (ab13680) at 1 $\mu\text{g/ml}$

Lane 1 : MCF10A cell lysate

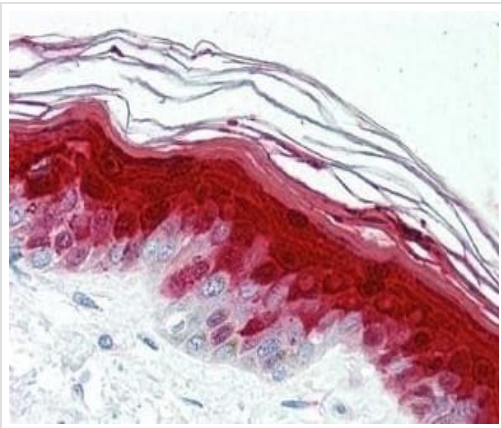
Lane 2 : MCF7 cell lysate

Predicted band size: 12.1 kDa



Immunohistochemistry (Formalin/PFA-fixed paraffin-
embedded sections) - Anti-Psoriasin antibody
[47C1068] (ab13680)

Immunohistochemistry analysis of human esophageal squamous
cell carcinoma (SCC) staining psoriasin with ab13680 in 5 $\mu\text{g/mL}$
concentration.



Immunohistochemistry analysis of formalin-fixed paraffin-embedded human skin tissue after heat-induced antigen retrieval, staining psoriasin with ab13680 in 10 µg/mL concentration.

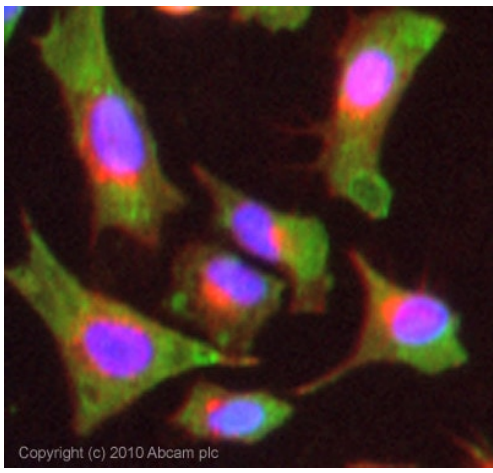
Immunohistochemistry (Formalin/PFA-fixed paraffin-embedded sections) - Anti-Psoriasin antibody [47C1068] (ab13680)



Western blot analysis of Psoriasin in confluent MCF10A cells using ab13680 at 1 µg/ml.

Western blot analysis of Psoriasin in confluent MCF10A cells using ab13680 at 1 µg/ml.

Western blot - Anti-Psoriasin antibody [47C1068] (ab13680)



ICC/IF image of ab13680 stained HeLa cells. The cells were 4% formaldehyde fixed (10 min) and then incubated in 1%BSA / 10% normal goat serum / 0.3M glycine in 0.1% PBS-Tween for 1h to permeabilise the cells and block non-specific protein-protein interactions. The cells were then incubated with the antibody (ab13680, 5µg/ml) overnight at +4°C. The secondary antibody (green) was Alexa Fluor® 488 goat anti-mouse IgG (H+L) used at a 1/1000 dilution for 1h. Alexa Fluor® 594 WGA was used to label plasma membranes (red) at a 1/200 dilution for 1h. DAPI was used to stain the cell nuclei (blue) at a concentration of 1.43µM.

Immunocytochemistry/ Immunofluorescence - Anti-Psoriasin antibody [47C1068] (ab13680)

Please note: All products are "FOR RESEARCH USE ONLY. NOT FOR USE IN DIAGNOSTIC PROCEDURES"

Our Abpromise to you: Quality guaranteed and expert technical support

- Replacement or refund for products not performing as stated on the datasheet
- Valid for 12 months from date of delivery
- Response to your inquiry within 24 hours
- We provide support in Chinese, English, French, German, Japanese and Spanish
- Extensive multi-media technical resources to help you
- We investigate all quality concerns to ensure our products perform to the highest standards

If the product does not perform as described on this datasheet, we will offer a refund or replacement. For full details of the Abpromise, please visit <https://www.abcam.com/abpromise> or contact our technical team.

Terms and conditions

- Guarantee only valid for products bought direct from Abcam or one of our authorized distributors