


## Product datasheet

### Anti-PSPC1 antibody ab115184

★★★★★ [1 Abreviews](#) [1 References](#) [2 Images](#)

#### Overview

|                            |   |
|----------------------------|---|
| <b>Product name</b>        | Anti-PSPC1 antibody   |
| <b>Description</b>         | Rabbit polyclonal to PSPC1  |
| <b>Host species</b>        | Rabbit  |
| <b>Tested applications</b> | <b>Suitable for:</b> WB, IP   |
| <b>Species reactivity</b>  | <b>Reacts with:</b> Human<br><b>Predicted to work with:</b> Mouse, Rat, Rabbit, Horse, Cow, Chimpanzee, Chinese hamster, Bat, Elephant   |
| <b>Immunogen</b>           | Synthetic peptide, corresponding to a region within amino acids 245-275 of Human PSPC1 (NP_001035879.1).  |
| <b>Positive control</b>    | HeLa, 293T or Jurkat whole cell lysate ( <a href="#">ab7899</a> ).  |
| <b>General notes</b>       | <p>The Life Science industry has been in the grips of a reproducibility crisis for a number of years. Abcam is leading the way in addressing this with our range of recombinant monoclonal antibodies and knockout edited cell lines for gold-standard validation. Please check that this product meets your needs before purchasing.</p> <p>If you have any questions, special requirements or concerns, please send us an inquiry and/or contact our Support team ahead of purchase. Recommended alternatives for this product can be found below, along with publications, customer reviews and Q&amp;As</p> |

#### Properties

|                             |   |
|-----------------------------|---|
| <b>Form</b>                 | Liquid  |
| <b>Storage instructions</b> | Shipped at 4°C. Upon delivery aliquot and store at -20°C. Avoid freeze / thaw cycles. |
| <b>Storage buffer</b>       | pH: 7<br>Preservative: 0.09% Sodium azide<br>Constituent: 99% Tris citrate/phosphate  |
| <b>Purity</b>               | Immunogen affinity purified   |
| <b>Clonality</b>            | Polyclonal  |
| <b>Isotype</b>              | IgG   |

#### Applications

## The Abpromise guarantee

Our **Abpromise guarantee** covers the use of ab115184 in the following tested applications.

The application notes include recommended starting dilutions; optimal dilutions/concentrations should be determined by the end user.

| Application | Abreviews | Notes   |
|-------------|-----------|---|
| WB          |           | 1/2000 - 1/10000. Predicted molecular weight: 59 kDa. |
| IP          |           | Use at 2-10 µg/mg of lysate.                          |

## Target

### Function

Regulates, cooperatively with NONO and SFPQ, androgen receptor-mediated gene transcription activity in Sertoli cell line (By similarity). Binds to poly(A), poly(G) and poly(U) RNA homopolymers.

### Tissue specificity

Expressed in pancreas, kidney, skeletal muscle, liver, lung, placenta, brain and heart.

### Sequence similarities

Belongs to the PSPC family.  
Contains 2 RRM (RNA recognition motif) domains.

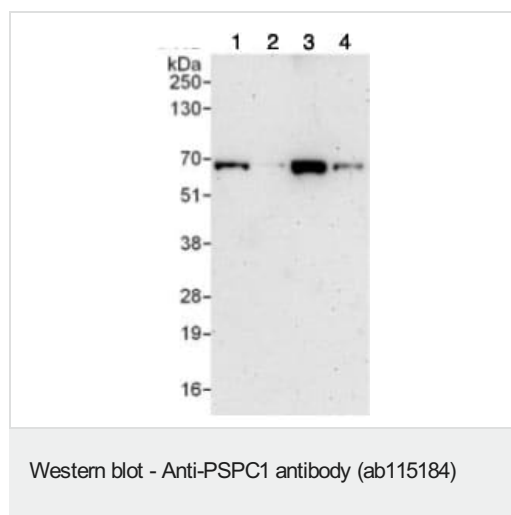
### Post-translational modifications

Phosphorylated upon DNA damage, probably by ATM or ATR.

### Cellular localization

Nucleus > nucleolus. Nucleus matrix. Cytoplasm. In punctate subnuclear structures often located adjacent to splicing speckles, called paraspeckles. Colocalizes with NONO and SFPQ in paraspeckles and perinucleolar caps in a RNA-dependent manner. May cycles between paraspeckles and nucleolus. In telophase, when daughter nuclei form, localizes to perinucleolar caps.

## Images



**All lanes :** Anti-PSPC1 antibody (ab115184) at 0.04 µg/ml

**Lane 1 :** HeLa whole cell lysate at 50 µg

**Lane 2 :** HeLa whole cell lysate at 15 µg

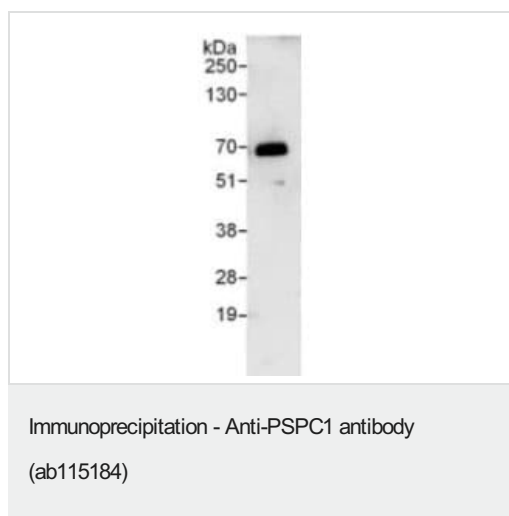
**Lane 3 :** 293T whole cell lysate at 50 µg

**Lane 4 :** Jurkat whole cell lysate at 50 µg

Developed using the ECL technique.

**Predicted band size:** 59 kDa

**Exposure time:** 3 minutes



Samples: whole cell lysate from HeLa cells (1 mg for IP, 20% of IP loaded).

Antibodies: ab115184 used for WB at 0.4 µg/ml and used for IP at 6 µg/mg lysate.

Detection: chemiluminescence with exposure time of 30 seconds (B).

**Please note:** All products are "FOR RESEARCH USE ONLY. NOT FOR USE IN DIAGNOSTIC PROCEDURES"

### Our Abpromise to you: Quality guaranteed and expert technical support

---

- Replacement or refund for products not performing as stated on the datasheet
- Valid for 12 months from date of delivery
- Response to your inquiry within 24 hours
- We provide support in Chinese, English, French, German, Japanese and Spanish
- Extensive multi-media technical resources to help you
- We investigate all quality concerns to ensure our products perform to the highest standards

If the product does not perform as described on this datasheet, we will offer a refund or replacement. For full details of the Abpromise, please visit <https://www.abcam.com/abpromise> or contact our technical team.

### Terms and conditions

---

- Guarantee only valid for products bought direct from Abcam or one of our authorized distributors