

Product datasheet

Anti-PTGIS/PGIS antibody ab23668

★★★★★ [2 Abreviews](#) [13 References](#) [1 Image](#)

Overview

Product name	Anti-PTGIS/PGIS antibody
Description	Rabbit polyclonal to PTGIS/PGIS
Host species	Rabbit
Tested applications	Suitable for: WB, ICC/IF, IHC-Fr, IHC-P
Species reactivity	Reacts with: Mouse, Rat, Sheep, Cow, Human
Immunogen	Synthetic peptide corresponding to Mouse PTGIS/PGIS aa 475-490. Sequence: PEFDLSRYGFGLMQPE

(Peptide available as [ab187257](#))

 [Run BLAST with](#)

 [Run BLAST with](#)

General notes

The Life Science industry has been in the grips of a reproducibility crisis for a number of years. Abcam is leading the way in addressing this with our range of recombinant monoclonal antibodies and knockout edited cell lines for gold-standard validation. Please check that this product meets your needs before purchasing.

If you have any questions, special requirements or concerns, please send us an inquiry and/or contact our Support team ahead of purchase. Recommended alternatives for this product can be found below, along with publications, customer reviews and Q&As

Properties

Form	Liquid
Storage instructions	Shipped at 4°C. Upon delivery aliquot and store at -20°C. Avoid freeze / thaw cycles.
Purification notes	Affinity purified
Clonality	Polyclonal
Isotype	IgG

Applications

The Abpromise guarantee

Our [Abpromise guarantee](#) covers the use of ab23668 in the following tested applications.

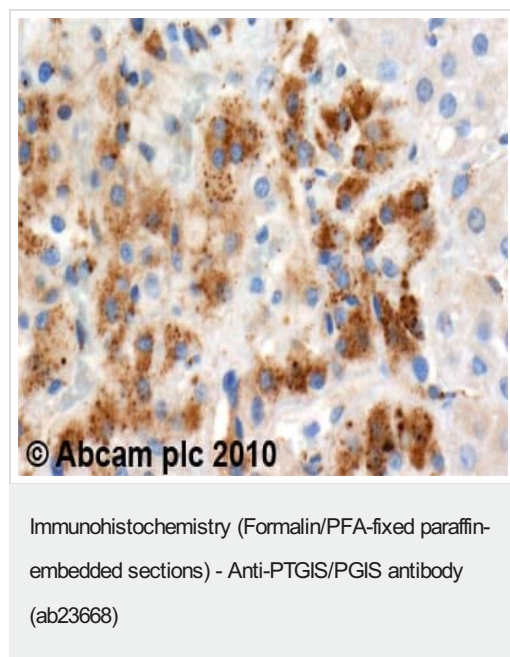
The application notes include recommended starting dilutions; optimal dilutions/concentrations should be determined by the end user.

Application	Abreviews	Notes
WB	★★★★★ (1)	Use at an assay dependent concentration.
ICC/IF	★★★★★ (1)	Use at an assay dependent concentration.
IHC-Fr		Use at an assay dependent concentration.
IHC-P		Use at an assay dependent concentration.

Target

Function	Catalyzes the isomerization of prostaglandin H2 to prostacyclin (= prostaglandin I2).
Tissue specificity	Widely expressed; particularly abundant in ovary, heart, skeletal muscle, lung and prostate.
Sequence similarities	Belongs to the cytochrome P450 family.
Cellular localization	Endoplasmic reticulum membrane.

Images



ab23668 (4µg/ml) staining PTGIS/PGIS in human adrenal gland using an automated system (DAKO Autostainer Plus). Using this protocol there is apical cytoplasmic/ endoplasmic reticulum staining.

Sections were rehydrated and antigen retrieved with the Dako 3 in 1 AR buffer EDTA pH 9.0 in a DAKO PT Link. Slides were peroxidase blocked in 3% H2O2 in methanol for 10 mins. They were then blocked with Dako Protein block for 10 minutes (containing casein 0.25% in PBS) then incubated with primary antibody for 20 min and detected with Dako Envision Flex amplification kit for 30 minutes. Colorimetric detection was completed with Diaminobenzidine for 5 minutes. Slides were counterstained with Haematoxylin and coverslipped under DePeX. Please note that, for manual staining, optimization of primary antibody concentration and incubation time is recommended. Signal amplification may be required.

Please note: All products are "FOR RESEARCH USE ONLY. NOT FOR USE IN DIAGNOSTIC PROCEDURES"

Our Abpromise to you: Quality guaranteed and expert technical support

- Replacement or refund for products not performing as stated on the datasheet

- Valid for 12 months from date of delivery
- Response to your inquiry within 24 hours
- We provide support in Chinese, English, French, German, Japanese and Spanish
- Extensive multi-media technical resources to help you
- We investigate all quality concerns to ensure our products perform to the highest standards

If the product does not perform as described on this datasheet, we will offer a refund or replacement. For full details of the Abpromise, please visit <https://www.abcam.com/abpromise> or contact our technical team.

Terms and conditions

- Guarantee only valid for products bought direct from Abcam or one of our authorized distributors