


## Product datasheet

# Anti-PTP zeta/ Phosphacan antibody ab110479

[1 Image](#)

### Overview

<b>Product name</b>	Anti-PTP zeta/ Phosphacan antibody
<b>Description</b>	Rabbit polyclonal to PTP zeta/ Phosphacan
<b>Host species</b>	Rabbit
<b>Tested applications</b>	<b>Suitable for:</b> WB
<b>Species reactivity</b>	<b>Reacts with:</b> Human <b>Predicted to work with:</b> Mouse, Rat 
<b>Immunogen</b>	A synthesized peptide derived from the N terminal region of Human PTP zeta/ Phosphacan.
<b>Positive control</b>	Extracts from A549 cells
<b>General notes</b>	<p>The Life Science industry has been in the grips of a reproducibility crisis for a number of years. Abcam is leading the way in addressing this with our range of recombinant monoclonal antibodies and knockout edited cell lines for gold-standard validation. Please check that this product meets your needs before purchasing.</p> <p>If you have any questions, special requirements or concerns, please send us an inquiry and/or contact our Support team ahead of purchase. Recommended alternatives for this product can be found below, along with publications, customer reviews and Q&amp;As</p>

### Properties

<b>Form</b>	Liquid
<b>Storage instructions</b>	Shipped at 4°C. Store at -20°C. Stable for 12 months at -20°C.
<b>Storage buffer</b>	pH: 7.40 Preservative: 0.02% Sodium azide Constituents: PBS, 0.88% Sodium chloride, 50% Glycerol (glycerin, glycerine)  PBS is without Mg <sup>2+</sup> and Ca <sup>2+</sup> .
<b>Purity</b>	Immunogen affinity purified
<b>Purification notes</b>	ab110479 was affinity-purified from rabbit antiserum by affinity-chromatography using epitope-specific immunogen.
<b>Clonality</b>	Polyclonal
<b>Isotype</b>	IgG

## Applications

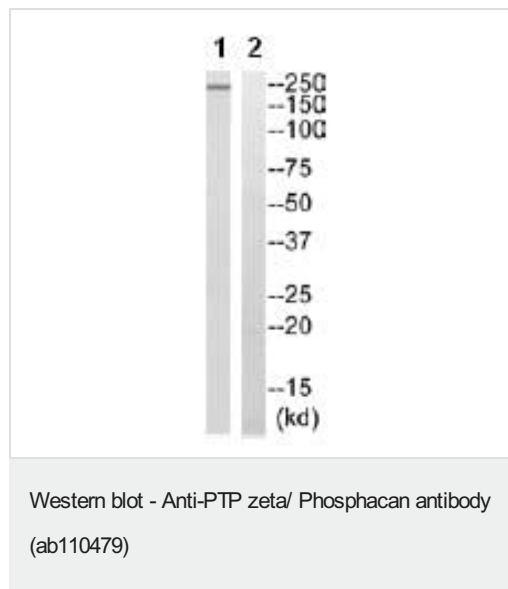
**The Abpromise guarantee** Our **Abpromise guarantee** covers the use of ab110479 in the following tested applications. The application notes include recommended starting dilutions; optimal dilutions/concentrations should be determined by the end user.

Application	Abreviews	Notes
WB		1/500 - 1/1000. Predicted molecular weight: 255 kDa.

## Target

<b>Function</b>	May be involved in the regulation of specific developmental processes in the CNS.
<b>Tissue specificity</b>	Specifically expressed in the central nervous system, where it is localized in the Purkinje cell layer of the cerebellum, the dentate gyrus, and the subependymal layer of the anterior horn of the lateral ventricle. Developmentally regulated in the brain.
<b>Sequence similarities</b>	Belongs to the protein-tyrosine phosphatase family. Receptor class 5 subfamily. Contains 1 alpha-carbonic anhydrase domain. Contains 1 fibronectin type-III domain. Contains 2 tyrosine-protein phosphatase domains.
<b>Cellular localization</b>	Membrane.

## Images



**All lanes** : Anti-PTP zeta/ Phosphacan antibody (ab110479) at 1/500 dilution

**Lane 1** : Extract from A549 cells

**Lane 2** : Extract from A549 cells with immunizing peptide at 10 µg

Lysates/proteins at 30 µg per lane.

**Predicted band size:** 255 kDa

**Please note:** All products are "FOR RESEARCH USE ONLY. NOT FOR USE IN DIAGNOSTIC PROCEDURES"

## Our Abpromise to you: Quality guaranteed and expert technical support

- Replacement or refund for products not performing as stated on the datasheet
- Valid for 12 months from date of delivery

- Response to your inquiry within 24 hours
- We provide support in Chinese, English, French, German, Japanese and Spanish
- Extensive multi-media technical resources to help you
- We investigate all quality concerns to ensure our products perform to the highest standards

If the product does not perform as described on this datasheet, we will offer a refund or replacement. For full details of the Abpromise, please visit <https://www.abcam.com/abpromise> or contact our technical team.

### **Terms and conditions**

---

- Guarantee only valid for products bought direct from Abcam or one of our authorized distributors