


Product datasheet

Anti-PTP4A2/PRL2 antibody [EPR3800] ab109118

Recombinant RabMAb

[1 References](#) [2 Images](#)

Overview

Product name	Anti-PTP4A2/PRL2 antibody [EPR3800]
Description	Rabbit monoclonal [EPR3800] to PTP4A2/PRL2
Host species	Rabbit
Specificity	The immunogen used for this product shares 71% identity (78% positives) with PRL-1. Cross-reactivity with this protein has not been confirmed experimentally.
Tested applications	Suitable for: WB Unsuitable for: Flow Cyt, ICC/IF or IHC-P
Species reactivity	Reacts with: Human Predicted to work with: Mouse, Rat 
Immunogen	Synthetic peptide. This information is proprietary to Abcam and/or its suppliers.
Positive control	WB: SW480, SKBR-3, A549 and HeLa cell lysates.
General notes	This product is a recombinant monoclonal antibody, which offers several advantages including: <ul style="list-style-type: none"> - High batch-to-batch consistency and reproducibility - Improved sensitivity and specificity - Long-term security of supply - Animal-free production For more information see here . Our RabMAb [®] technology is a patented hybridoma-based technology for making rabbit monoclonal antibodies. For details on our patents, please refer to RabMAb[®] patents .

Properties

Form	Liquid
Storage instructions	Shipped at 4°C. Store at -20°C. Stable for 12 months at -20°C.
Storage buffer	pH: 7.20 Preservative: 0.05% Sodium azide Constituents: 0.1% BSA, 40% Glycerol (glycerin, glycerine), 9.85% Tris glycine, 50% PBS
Purity	Protein A purified
Clonality	Monoclonal

Clone number EPR3800

Isotype IgG

Applications

The Abpromise guarantee Our **Abpromise guarantee** covers the use of ab109118 in the following tested applications. The application notes include recommended starting dilutions; optimal dilutions/concentrations should be determined by the end user.

Application	Abreviews	Notes
WB		1/1000 - 1/10000. Detects a band of approximately 23 kDa (predicted molecular weight: 19 kDa).

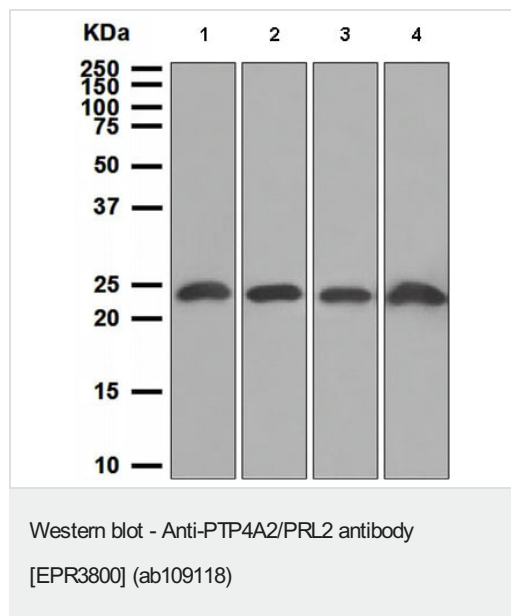
Application notes Is unsuitable for Flow Cyt, ICC/IF or IHC-P.

Target

Relevance Protein tyrosine phosphatase which stimulates progression from G1 into S phase during mitosis. Promotes tumors. Inhibits geranylgeranyl transferase type II activity by blocking the association between RABGGTA and RABGGTB. Ubiquitously expressed, with highest levels in skeletal muscle, heart and thymus. Overexpressed in prostate tumor tissue.

Cellular localization Cell Membrane, Early Endosome and Cytoplasm.

Images



All lanes : Anti-PTP4A2/PRL2 antibody [EPR3800] (ab109118) at 1/1000 dilution

Lane 1 : SW480 cell lysate

Lane 2 : SKBR-3 cell lysate





Lane 3 : A549 cell lysate

Lane 4 : HeLa cell lysate

Lysates/proteins at 10 µg per lane.

Predicted band size: 19 kDa

Why choose a recombinant antibody?

 <p>Research with confidence Consistent and reproducible results</p>	 <p>Long-term and scalable supply Recombinant technology</p>
 <p>Success from the first experiment Confirmed specificity</p>	 <p>Ethical standards compliant Animal-free production</p>

Anti-PTP4A2/PRL2 antibody [EPR3800] (ab109118)

Please note: All products are "FOR RESEARCH USE ONLY. NOT FOR USE IN DIAGNOSTIC PROCEDURES"

Our Abpromise to you: Quality guaranteed and expert technical support

- Replacement or refund for products not performing as stated on the datasheet
- Valid for 12 months from date of delivery
- Response to your inquiry within 24 hours
- We provide support in Chinese, English, French, German, Japanese and Spanish
- Extensive multi-media technical resources to help you
- We investigate all quality concerns to ensure our products perform to the highest standards

If the product does not perform as described on this datasheet, we will offer a refund or replacement. For full details of the Abpromise, please visit <https://www.abcam.com/abpromise> or contact our technical team.

Terms and conditions

- Guarantee only valid for products bought direct from Abcam or one of our authorized distributors