

### Anti-PTP4A3/PRL-R antibody ab26947

[1 References](#) [1 Image](#)

#### Overview

<b>Product name</b>	Anti-PTP4A3/PRL-R antibody
<b>Description</b>	Rabbit polyclonal to PTP4A3/PRL-R
<b>Host species</b>	Rabbit
<b>Tested applications</b>	<b>Suitable for:</b> WB
<b>Species reactivity</b>	<b>Reacts with:</b> Recombinant fragment
<b>Immunogen</b>	Recombinant full length protein corresponding to Human PTP4A3/PRL-R.
<b>General notes</b>	<p>The Life Science industry has been in the grips of a reproducibility crisis for a number of years. Abcam is leading the way in addressing this with our range of recombinant monoclonal antibodies and knockout edited cell lines for gold-standard validation. Please check that this product meets your needs before purchasing.</p> <p>If you have any questions, special requirements or concerns, please send us an inquiry and/or contact our Support team ahead of purchase. Recommended alternatives for this product can be found below, along with publications, customer reviews and Q&amp;As</p>

#### Properties

<b>Form</b>	Liquid
<b>Storage instructions</b>	Shipped at 4°C. Store at +4°C short term (1-2 weeks). Upon delivery aliquot. Store at -20°C long term.
<b>Storage buffer</b>	Constituent: Whole serum
<b>Purity</b>	Whole antiserum
<b>Clonality</b>	Polyclonal
<b>Isotype</b>	IgG

#### Applications

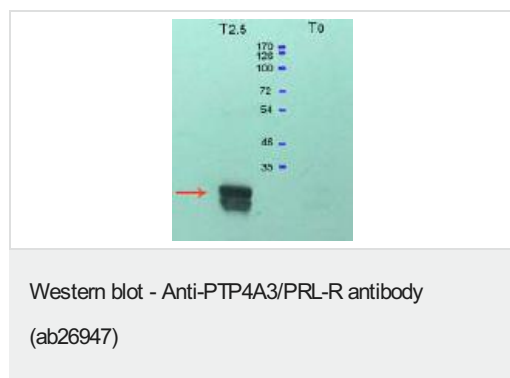
**The Abpromise guarantee** Our **Abpromise guarantee** covers the use of ab26947 in the following tested applications. The application notes include recommended starting dilutions; optimal dilutions/concentrations should be determined by the end user.

Application	Abreviews	Notes
WB		1/5000. Predicted molecular weight: 19 kDa.

## Target

<b>Function</b>	Protein tyrosine phosphatase which stimulates progression from G1 into S phase during mitosis. Enhances cell proliferation, cell motility and invasive activity, and promotes cancer metastasis. May be involved in the progression of cardiac hypertrophy by inhibiting intracellular calcium mobilization in response to angiotensin II.
<b>Tissue specificity</b>	Mainly expressed in cardiomyocytes and skeletal muscle; also found in pancreas. Consistently overexpressed in colon cancer metastasis.
<b>Sequence similarities</b>	Belongs to the protein-tyrosine phosphatase family. Contains 1 tyrosine-protein phosphatase domain.
<b>Post-translational modifications</b>	Farnesylated. Farnesylation is required for membrane targeting.
<b>Cellular localization</b>	Cell membrane. Early endosome.

## Images



**All lanes :** Anti-PTP4A3/PRL-R antibody (ab26947) at 1/5000 dilution

**Lane 1 :** (T2.5) IPTG induction of the recombinant protein expression for 2.5 hours.

**Lane 2 :** (T0) before IPTG induction of the protein expression

**Predicted band size:** 19 kDa

**Observed band size:** 23.9 kDa

**Please note:** All products are "FOR RESEARCH USE ONLY. NOT FOR USE IN DIAGNOSTIC PROCEDURES"

## Our Abpromise to you: Quality guaranteed and expert technical support

- Replacement or refund for products not performing as stated on the datasheet
- Valid for 12 months from date of delivery
- Response to your inquiry within 24 hours
- We provide support in Chinese, English, French, German, Japanese and Spanish
- Extensive multi-media technical resources to help you
- We investigate all quality concerns to ensure our products perform to the highest standards

If the product does not perform as described on this datasheet, we will offer a refund or replacement. For full details of the Abpromise, please visit <https://www.abcam.com/abpromise> or contact our technical team.

#### **Terms and conditions**

---

- Guarantee only valid for products bought direct from Abcam or one of our authorized distributors