

Product datasheet

Anti-PTPLA antibody - N-terminal ab192772

3 Images

Overview

Product name	Anti-PTPLA antibody - N-terminal
Description	Rabbit polyclonal to PTPLA - N-terminal
Host species	Rabbit
Tested applications	Suitable for: WB, IHC-P
Species reactivity	Reacts with: Human
Immunogen	Synthetic peptide corresponding to Human PTPLA aa 1-100 (N terminal) conjugated to keyhole limpet haemocyanin. Database link: B0YJ81
	Run BLAST with Run BLAST with
Positive control	Human breast and prostate tissue. MDA-MB231 cell lysate.
General notes	<p>The Life Science industry has been in the grips of a reproducibility crisis for a number of years. Abcam is leading the way in addressing this with our range of recombinant monoclonal antibodies and knockout edited cell lines for gold-standard validation. Please check that this product meets your needs before purchasing.</p> <p>If you have any questions, special requirements or concerns, please send us an inquiry and/or contact our Support team ahead of purchase. Recommended alternatives for this product can be found below, along with publications, customer reviews and Q&As</p>

Properties

Form	Liquid
Storage instructions	Shipped at 4°C. Store at +4°C short term (1-2 weeks). Upon delivery aliquot. Store at -20°C long term. Avoid freeze / thaw cycle.
Storage buffer	pH: 7.4 Preservative: 0.09% Sodium azide Constituent: 99% PBS
Purity	Immunogen affinity purified
Clonality	Polyclonal
Isotype	IgG

Applications

The Abpromise guarantee Our **Abpromise guarantee** covers the use of ab192772 in the following tested applications.

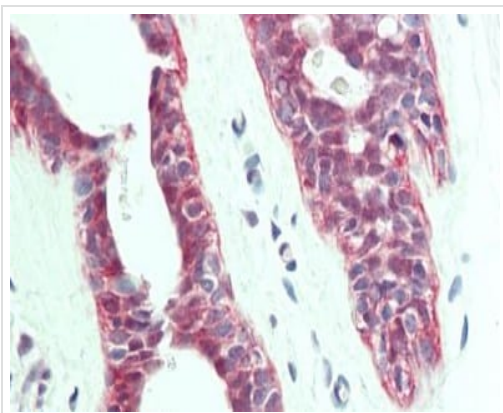
The application notes include recommended starting dilutions; optimal dilutions/concentrations should be determined by the end user.

Application	Abreviews	Notes
WB		1/1000. Predicted molecular weight: 32 kDa.
IHC-P		1/100.

Target

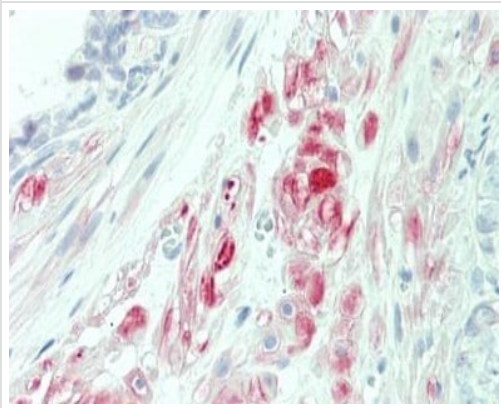
Function	Responsible for the dehydration step in very long-chain fatty acids (VLCFAs) synthesis.
Tissue specificity	Highly expressed in the myocardium, and to a lesser extent in skeletal and smooth muscular tissues including those from stomach, jejunum, and bladder.
Sequence similarities	Belongs to the very long-chain fatty acids dehydratase HACD family.
Developmental stage	Expressed in fetal heart.
Cellular localization	Endoplasmic reticulum membrane.

Images



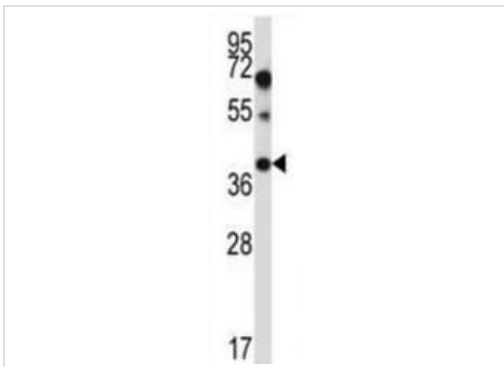
Immunohistochemistry of formalin-fixed, paraffin-embedded human breast tissue labeling PTPLA with ab192772 at a 1/100 dilution.

Immunohistochemistry (Formalin/PFA-fixed paraffin-embedded sections) - Anti-PTPLA antibody - N-terminal (ab192772)



Immunohistochemistry of formalin-fixed, paraffin-embedded human prostate tissue labeling PTPLA with ab192772 at a 1/100 dilution.

Immunohistochemistry (Formalin/PFA-fixed paraffin-embedded sections) - Anti-PTPLA antibody - N-terminal (ab192772)



Anti-PTPLA antibody - N-terminal (ab192772) at 1/1000 dilution + MDA-MB231 cell line lysates at 35 µg

Predicted band size: 32 kDa

Western blot - Anti-PTPLA antibody - N-terminal (ab192772)

Please note: All products are "FOR RESEARCH USE ONLY. NOT FOR USE IN DIAGNOSTIC PROCEDURES"

Our Abpromise to you: Quality guaranteed and expert technical support

- Replacement or refund for products not performing as stated on the datasheet
- Valid for 12 months from date of delivery
- Response to your inquiry within 24 hours
- We provide support in Chinese, English, French, German, Japanese and Spanish
- Extensive multi-media technical resources to help you

- We investigate all quality concerns to ensure our products perform to the highest standards

If the product does not perform as described on this datasheet, we will offer a refund or replacement. For full details of the Abpromise, please visit <https://www.abcam.com/abpromise> or contact our technical team.

Terms and conditions

- Guarantee only valid for products bought direct from Abcam or one of our authorized distributors