

Anti-PUMA antibody - C-terminal ab227130

4 Images

Overview

Product name	Anti-PUMA antibody - C-terminal
Description	Rabbit polyclonal to PUMA - C-terminal
Host species	Rabbit
Tested applications	Suitable for: IHC-P, WB, IP
Species reactivity	Reacts with: Human
Immunogen	Synthetic peptide within Human PUMA (C terminal). The exact sequence is proprietary. (Carrier-protein conjugated). Database link: Q9BXH1
Positive control	WB: HCT 116 treated with cisplatin whole cell lysate; K562 and THP-1 whole cell extracts. IP: HCT 116 treated with cisplatin whole cell extract. IHC-P: Human hepatoma tissue.
General notes	<p>The Life Science industry has been in the grips of a reproducibility crisis for a number of years. Abcam is leading the way in addressing this with our range of recombinant monoclonal antibodies and knockout edited cell lines for gold-standard validation. Please check that this product meets your needs before purchasing.</p> <p>If you have any questions, special requirements or concerns, please send us an inquiry and/or contact our Support team ahead of purchase. Recommended alternatives for this product can be found below, along with publications, customer reviews and Q&As</p>

Properties

Form	Liquid
Storage instructions	Shipped at 4°C. Store at +4°C short term (1-2 weeks). Upon delivery aliquot. Store at -20°C long term. Avoid freeze / thaw cycle.
Storage buffer	pH: 7.00 Preservative: 0.01% Thimerosal (merthiolate) Constituents: 1.21% Tris, 0.75% Glycine, 10% Glycerol (glycerin, glycerine)
Purity	Immunogen affinity purified
Clonality	Polyclonal
Isotype	IgG

Applications

The Abpromise guarantee

Our **Abpromise guarantee** covers the use of ab227130 in the following tested applications.

The application notes include recommended starting dilutions; optimal dilutions/concentrations should be determined by the end user.

Application	Abreviews	Notes
IHC-P		1/100 - 1/1000.
WB		1/500 - 1/3000. Predicted molecular weight: 21 kDa.
IP		1/100 - 1/500.

Target

Function

Essential mediator of p53-dependent and p53-independent apoptosis.

Tissue specificity

Ubiquitously expressed.

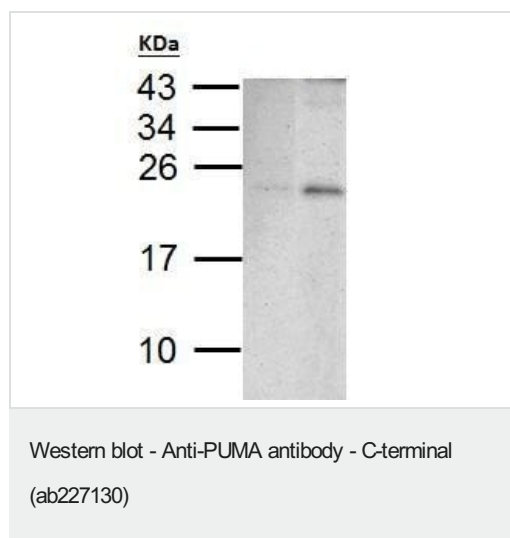
Sequence similarities

Belongs to the Bcl-2 family.

Cellular localization

Mitochondrion. Localized to the mitochondria in order to induce cytochrome c release.

Images



All lanes : Anti-PUMA antibody - C-terminal (ab227130) at 1/1000 dilution

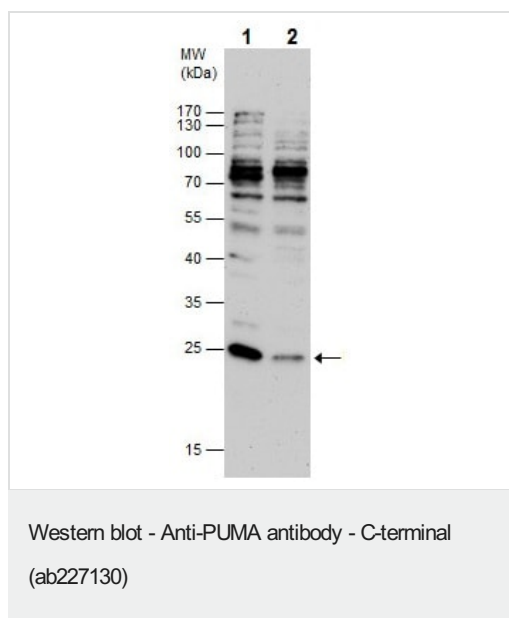
Lane 1 : HCT 116 (human colorectal carcinoma cell line) with mock treatment for 0 hours, whole cell lysate

Lane 2 : HCT 116 (human colorectal carcinoma cell line) with 30 uM cisplatin treatment for 24 hours, whole cell lysate

Lysates/proteins at 30 µg per lane.

Predicted band size: 21 kDa

15% SDS-PAGE gel.



All lanes : Anti-PUMA antibody - C-terminal (ab227130) at 1/500 dilution

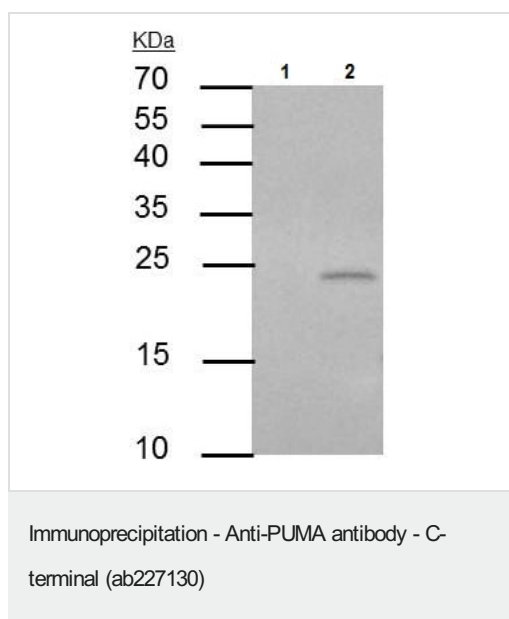
Lane 1 : K562 (human chronic myelogenous leukemia cell line from bone marrow) whole cell extract

Lane 2 : THP-1 (human monocytic leukemia cell line) whole cell extract

Lysates/proteins at 30 µg per lane.

Predicted band size: 21 kDa

12 % SDS-PAGE gel.

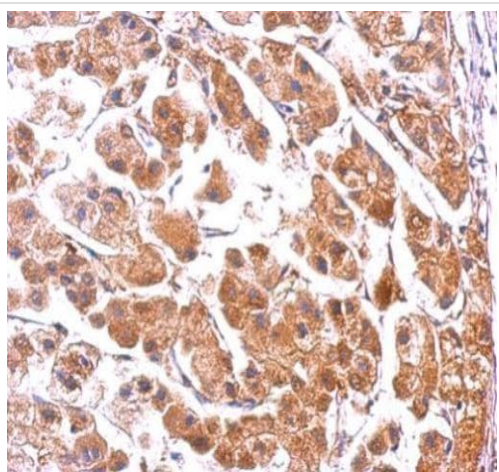


PUMA was immunoprecipitated from HCT 116 (human colorectal carcinoma cell line) treated with 30 µM cisplatin for 24 hours, whole cell extract with 4 µg of ab227130. Western blot was performed from the immunoprecipitate using ab227130. Anti-rabbit IgG was used as a secondary reagent.

Lane 1: Preimmune Rabbit IgG instead of ab227130 in HCT 116 treated with 30 µM cisplatin for 24 hours, whole cell extract.

Lane 2: ab227130 IP in HCT 116 treated with 30 µM cisplatin for 24 hours, whole cell extract.

15 % SDS-PAGE gel.



Paraffin-embedded human hepatoma tissue stained for PUMA using ab227130 at 1/500 dilution in immunohistochemical analysis.

Immunohistochemistry (Formalin/PFA-fixed paraffin-embedded sections) - Anti-PUMA antibody - C-terminal (ab227130)

Please note: All products are "FOR RESEARCH USE ONLY. NOT FOR USE IN DIAGNOSTIC PROCEDURES"

Our Abpromise to you: Quality guaranteed and expert technical support

- Replacement or refund for products not performing as stated on the datasheet
- Valid for 12 months from date of delivery
- Response to your inquiry within 24 hours
- We provide support in Chinese, English, French, German, Japanese and Spanish
- Extensive multi-media technical resources to help you
- We investigate all quality concerns to ensure our products perform to the highest standards

If the product does not perform as described on this datasheet, we will offer a refund or replacement. For full details of the Abpromise, please visit <https://www.abcam.com/abpromise> or contact our technical team.

Terms and conditions

- Guarantee only valid for products bought direct from Abcam or one of our authorized distributors