

Product datasheet

Anti-PWP1 antibody [EPR16130] ab190794

Recombinant RabMAb

[2 References](#) [5 Images](#)

Overview

Product name	Anti-PWP1 antibody [EPR16130]
Description	Rabbit monoclonal [EPR16130] to PWP1
Host species	Rabbit
Tested applications	Suitable for: Flow Cyt (Intra), IHC-P, WB
Species reactivity	Reacts with: Human
Immunogen	Synthetic peptide. This information is proprietary to Abcam and/or its suppliers.
Positive control	Jurkat, HeLa, 293, HepG2 cell lysates, Human pancreas tissue, Jurkat cells
General notes	<p>This product is a recombinant monoclonal antibody, which offers several advantages including:</p> <ul style="list-style-type: none">- High batch-to-batch consistency and reproducibility- Improved sensitivity and specificity- Long-term security of supply- Animal-free production <p>For more information see here.</p> <p>Our RabMAb[®] technology is a patented hybridoma-based technology for making rabbit monoclonal antibodies. For details on our patents, please refer to RabMAb[®] patents.</p>

Properties

Form	Liquid
Storage instructions	Shipped at 4°C. Store at +4°C short term (1-2 weeks). Upon delivery aliquot. Store at -20°C long term. Avoid freeze / thaw cycle.
Storage buffer	pH: 7.2 Preservative: 0.01% Sodium azide Constituents: 59% PBS, 40% Glycerol (glycerin, glycerine), 0.05% BSA
Purity	Protein A purified
Clonality	Monoclonal
Clone number	EPR16130
Isotype	IgG

Applications

The Abpromise guarantee

Our **Abpromise guarantee** covers the use of ab190794 in the following tested applications.

The application notes include recommended starting dilutions; optimal dilutions/concentrations should be determined by the end user.

Application	Abreviews	Notes
Flow Cyt (Intra)		1/30. ab172730 - Rabbit monoclonal IgG, is suitable for use as an isotype control with this antibody.
IHC-P		1/100. Perform heat mediated antigen retrieval with Tris/EDTA buffer pH 9.0 before commencing with IHC staining protocol.
WB		1/1000 - 1/10000. Detects a band of approximately 79 kDa (predicted molecular weight: 56 kDa).

Target

Function

May play an important role in cell growth and/or transcription.

Tissue specificity

High levels seen in the placenta, skeletal muscle, kidney and pancreas while lower levels were seen in the heart, brain and lung.

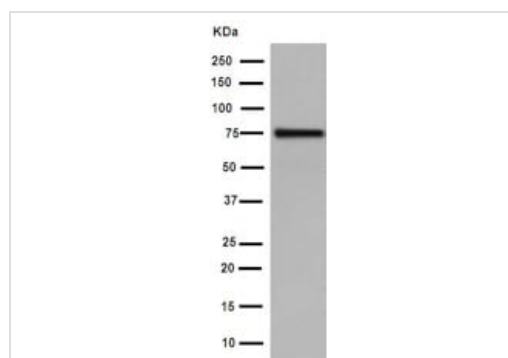
Sequence similarities

Belongs to the WD repeat PWP1 family.
Contains 5 WD repeats.

Cellular localization

Nucleus.

Images



Western blot - Anti-PWP1 antibody [EPR16130] (ab190794)

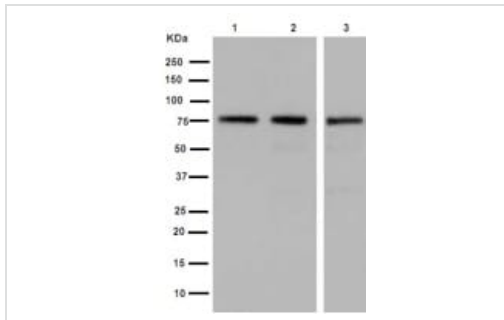
Anti-PWP1 antibody [EPR16130] (ab190794) at 1/10000 dilution + Jurkat cell lysate at 20 µg

Secondary

Goat Anti-Rabbit IgG, (H+L), Peroxidase conjugated at 1/1000 dilution

Predicted band size: 56 kDa

Additional bands at: 79 kDa. We are unsure as to the identity of these extra bands.



Western blot - Anti-PWP1 antibody [EPR16130] (ab190794)

All lanes : Anti-PWP1 antibody [EPR16130] (ab190794) at 1/1000 dilution

Lane 1 : HeLa cell lysate

Lane 2 : 293 cell lysate

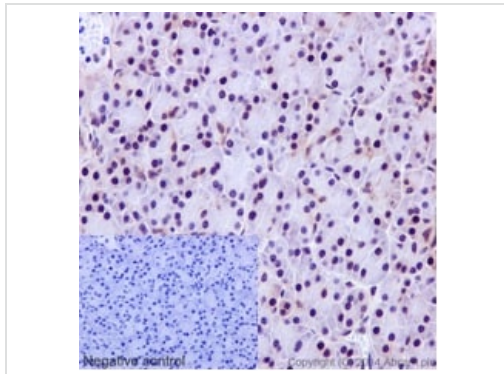
Lane 3 : HepG2 cell lysate

Lysates/proteins at 20 µg per lane.

Secondary

All lanes : Goat Anti-Rabbit IgG, (H+L), Peroxidase conjugated at 1/1000 dilution

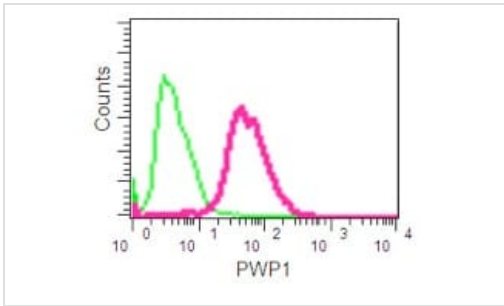
Predicted band size: 56 kDa



Immunohistochemistry (Formalin/PFA-fixed paraffin-embedded sections) - Anti-PWP1 antibody [EPR16130] (ab190794)

Immunohistochemical analysis of formalin-fixed, paraffin-embedded Human pancreas tissue, labeling PWP1 with ab190794 at 1/100 dilution. Detected using HRP Polymer for Rabbit IgG and counter-stained using hematoxylin.





Perform heat mediated antigen retrieval with Tris/EDTA buffer pH 9.0 before commencing with IHC staining protocol.



Intracellular Flow Cytometry analysis of PWP1 expression in Jurkat cells using ab190794 at 1/30 dilution (red) and a rabbit IgG as negative control (green). A FITC-conjugated goat anti-rabbit IgG (1/150) was used as the secondary antibody.

Flow Cytometry (Intracellular) - Anti-PWP1 antibody [EPR16130] (ab190794)

Why choose a recombinant antibody?

 Research with confidence Consistent and reproducible results	 Long-term and scalable supply Recombinant technology
 Success from the first experiment Confirmed specificity	 Ethical standards compliant Animal-free production

Anti-PWP1 antibody [EPR16130] (ab190794)

Please note: All products are "FOR RESEARCH USE ONLY. NOT FOR USE IN DIAGNOSTIC PROCEDURES"

Our Abpromise to you: Quality guaranteed and expert technical support

- Replacement or refund for products not performing as stated on the datasheet
- Valid for 12 months from date of delivery
- Response to your inquiry within 24 hours
- We provide support in Chinese, English, French, German, Japanese and Spanish
- Extensive multi-media technical resources to help you
- We investigate all quality concerns to ensure our products perform to the highest standards

If the product does not perform as described on this datasheet, we will offer a refund or replacement. For full details of the Abpromise, please visit <https://www.abcam.com/abpromise> or contact our technical team.

Terms and conditions

- Guarantee only valid for products bought direct from Abcam or one of our authorized distributors