

Product datasheet

Anti-PYCR2 antibody ab103535

★★★★★ [3 Abreviews](#) [3 References](#) [3 Images](#)

Overview

Product name	Anti-PYCR2 antibody
Description	Rabbit polyclonal to PYCR2
Host species	Rabbit
Tested applications	Suitable for: WB
Species reactivity	Reacts with: Human
Immunogen	Recombinant full length protein within Human PYCR2 aa 1-350. The exact immunogen sequence used to generate this antibody is proprietary information. If additional detail on the immunogen is needed to determine the suitability of the antibody for your needs, please contact our Scientific Support team to discuss your requirements.
Positive control	HeLa cell lysate; PYCR2 transfected 293T cell line lysate
General notes	<p>The Life Science industry has been in the grips of a reproducibility crisis for a number of years. Abcam is leading the way in addressing this with our range of recombinant monoclonal antibodies and knockout edited cell lines for gold-standard validation. Please check that this product meets your needs before purchasing.</p> <p>If you have any questions, special requirements or concerns, please send us an inquiry and/or contact our Support team ahead of purchase. Recommended alternatives for this product can be found below, along with publications, customer reviews and Q&As</p>

Properties

Form	Liquid
Storage instructions	Shipped at 4°C. Upon delivery aliquot. Store at -20°C or -80°C. Avoid freeze / thaw cycle.
Storage buffer	pH: 7.40 Constituent: 100% PBS
Purity	Protein A purified
Clonality	Polyclonal
Isotype	IgG

Applications

The Abpromise guarantee

Our **Abpromise guarantee** covers the use of ab103535 in the following tested applications.

The application notes include recommended starting dilutions; optimal dilutions/concentrations should be determined by the end user.

Application	Abreviews	Notes
WB	★★★★★ (3)	1/500 - 1/1000. Predicted molecular weight: 34 kDa.

Target

Function

Housekeeping enzyme that catalyzes the last step in proline biosynthesis. In some cell types, such as erythrocytes, its primary function may be the generation of NADP(+). Can utilize both NAD and NADP. Has higher affinity for NADP, but higher catalytic efficiency with NADH.

Tissue specificity

Detected in erythrocytes (at protein level).

Pathway

Amino-acid biosynthesis; L-proline biosynthesis; L-proline from L-glutamate 5-semialdehyde: step 1/1.

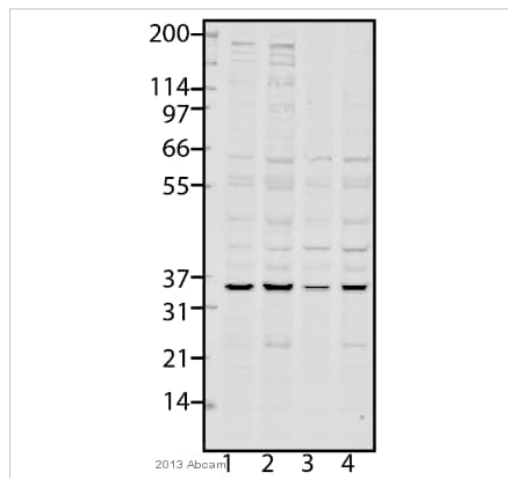
Sequence similarities

Belongs to the pyrroline-5-carboxylate reductase family.

Cellular localization

Cytoplasm.

Images



Western blot - Anti-PYCR2 antibody (ab103535)

This image is courtesy of an anonymous abreview.

All lanes : Anti-PYCR2 antibody (ab103535) at 1/1000 dilution

Lane 1 : HeLa whole cell lysate- 18µg

Lane 2 : HeLa whole cell lysate- 36µg

Lane 3 : RPE-1 whole cell lysate- 18µg

Lane 4 : RPE-1 whole cell lysate- 36µg

Secondary

All lanes : LICOR, anti rabbit 800CW conjugated to IRDye®
800CW at 1/20000 dilution

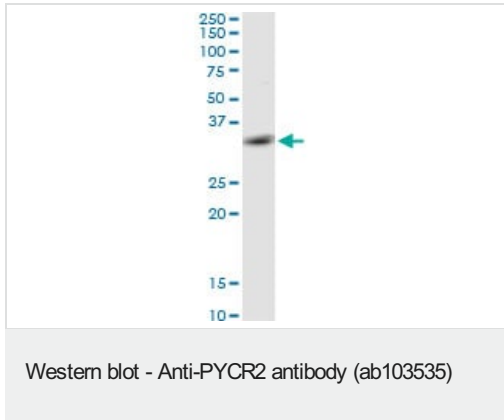
Performed under reducing conditions.

Predicted band size: 34 kDa

Observed band size: 35 kDa

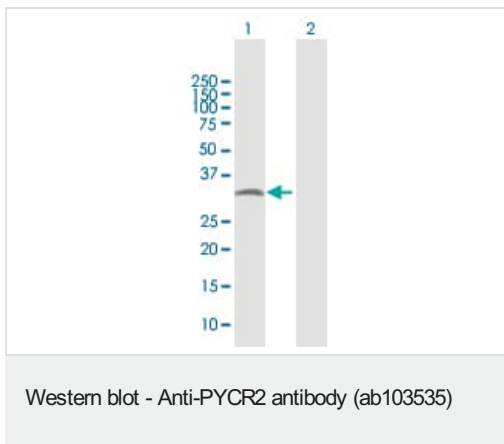
Exposure time: 7 minutes

Blocking: 10% Milk



Anti-PYCR2 antibody (ab103535) at 1/500 dilution + HeLa cell lysate at 50 µg

Predicted band size: 34 kDa



All lanes : Anti-PYCR2 antibody (ab103535) at 1/500 dilution

Lane 1 : PYCR2 transfected 293T cell line lysate

Lane 2 : Non-transfected 293T cell line lysate

Lysates/proteins at 25 µg per lane.

Predicted band size: 34 kDa

Please note: All products are "FOR RESEARCH USE ONLY. NOT FOR USE IN DIAGNOSTIC PROCEDURES"

Our Abpromise to you: Quality guaranteed and expert technical support

- Replacement or refund for products not performing as stated on the datasheet
- Valid for 12 months from date of delivery
- Response to your inquiry within 24 hours
- We provide support in Chinese, English, French, German, Japanese and Spanish
- Extensive multi-media technical resources to help you
- We investigate all quality concerns to ensure our products perform to the highest standards

If the product does not perform as described on this datasheet, we will offer a refund or replacement. For full details of the Abpromise, please visit <https://www.abcam.com/abpromise> or contact our technical team.

Terms and conditions

- Guarantee only valid for products bought direct from Abcam or one of our authorized distributors