


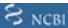


Product datasheet

Anti-QRFP antibody ab126388

5 Images

Overview

Product name	Anti-QRFP antibody
Description	Rabbit polyclonal to QRFP
Host species	Rabbit
Tested applications	Suitable for: IHC-P, WB
Species reactivity	Reacts with: Human
Immunogen	antigen sequence: GREHAGCRFR FGRQDEGSEA TGFLPAAGEK TSGPLGNLAE ELNGYSRKKG GFSFR, corresponding to amino acids 78-132 of Human QRFP.  Run BLAST with   Run BLAST with 
Positive control	WB: QRFP over-expression lysate (Co-expressed with a C-terminal myc-DDK tag (~3.1 kDa) in mammalian HEK293T cells. IHC-P: Human small intestine, prostate, pancreas and endometrium tissue.
General notes	<p>The Life Science industry has been in the grips of a reproducibility crisis for a number of years. Abcam is leading the way in addressing this with our range of recombinant monoclonal antibodies and knockout edited cell lines for gold-standard validation. Please check that this product meets your needs before purchasing.</p> <p>If you have any questions, special requirements or concerns, please send us an inquiry and/or contact our Support team ahead of purchase. Recommended alternatives for this product can be found below, along with publications, customer reviews and Q&As</p>

Properties

Form	Liquid
Storage instructions	Shipped at 4°C. Upon delivery aliquot and store at -20°C. Avoid freeze / thaw cycles.
Storage buffer	pH: 7.20 Preservative: 0.02% Sodium azide Constituents: 59% PBS, 40% Glycerol (glycerin, glycerine)
Purity	Immunogen affinity purified
Clonality	Polyclonal
Isotype	IgG

Applications

The Abpromise guarantee

Our **Abpromise guarantee** covers the use of ab126388 in the following tested applications.

The application notes include recommended starting dilutions; optimal dilutions/concentrations should be determined by the end user.

Application	Abreviews	Notes
IHC-P		1/200 - 1/500. Perform heat mediated antigen retrieval with citrate buffer pH 6 before commencing with IHC staining protocol.
WB		Use a concentration of 0.04 - 0.4 µg/ml. Predicted molecular weight: 15 kDa.

Target

Function

Stimulates feeding behavior, metabolic rate and locomotor activity and increases blood pressure. May have orexigenic activity. May promote aldosterone secretion by the adrenal gland.

Tissue specificity

Expressed widely in the brain with highest expression levels in the cerebellum, medulla, pituitary, retina, vestibular nucleus, and white matter. Also expressed in the bladder, colon, coronary artery, parathyroid gland, prostate, testis, and thyroid.

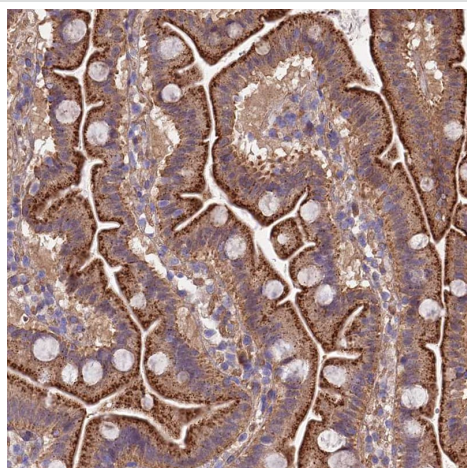
Sequence similarities

Belongs to the RFamide neuropeptide family.

Cellular localization

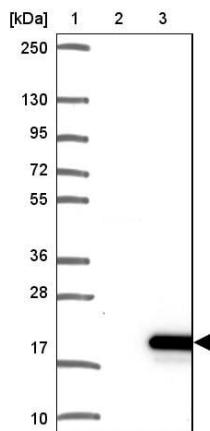
Secreted.

Images



Immunohistochemistry analysis of formalin-fixed, paraffin-embedded human small intestine tissue labeling QRFP with ab126388 at 1/500.

Immunohistochemistry (Formalin/PFA-fixed paraffin-embedded sections) - Anti-QRFP antibody (ab126388)



Western blot - Anti-QRFP antibody (ab126388)

Lane 3 : Anti-QRFP antibody (ab126388)

Lane 2 : Negative control (vector only transfected HEK293T lysate).

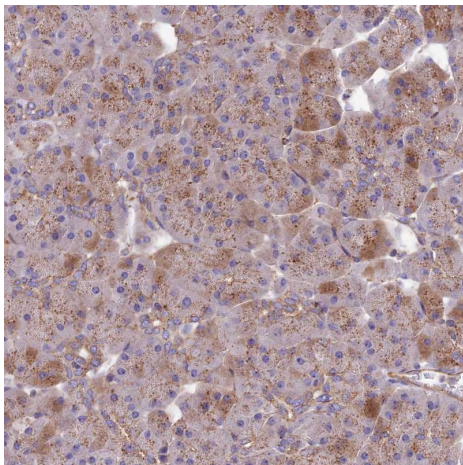
Lane 3 : Over-expression lysate (Co-expressed with a C-terminal myc-DDK tag (~3.1 kDa) in mammalian HEK293T cells, LY404880).

Predicted band size: 15 kDa

Lane 1: Marker [kDa] 250, 130, 95, 72, 55, 36, 28, 17, 10

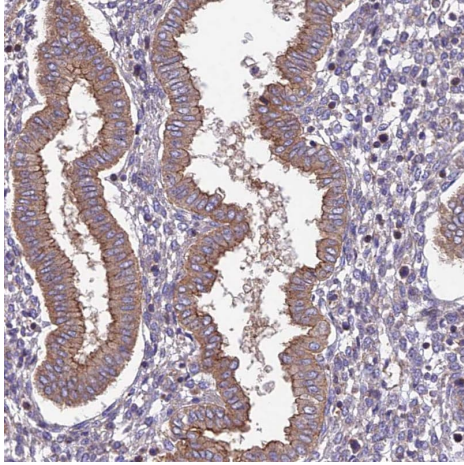
Lane 2: Negative control (vector only transfected HEK293T lysate)

Lane 3: Over-expression lysate (Co-expressed with a C-terminal myc-DDK tag (~3.1 kDa) in mammalian HEK293T cells, LY404880)



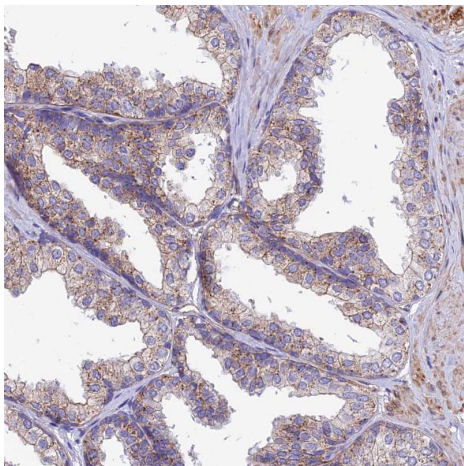
Immunohistochemistry (Formalin/PFA-fixed paraffin-embedded sections) - Anti-QRFP antibody (ab126388)

Immunohistochemistry analysis of formalin-fixed, paraffin-embedded human pancreas tissue labeling QRFP with ab126388 at 1/500.



Immunohistochemistry analysis of formalin-fixed, paraffin-embedded human endometrium tissue labeling QRFP with ab126388 at 1/500.

Immunohistochemistry (Formalin/PFA-fixed paraffin-embedded sections) - Anti-QRFP antibody (ab126388)



Immunohistochemistry analysis of formalin-fixed, paraffin-embedded human prostate tissue labeling QRFP with ab126388 at 1/500.

Immunohistochemistry (Formalin/PFA-fixed paraffin-embedded sections) - Anti-QRFP antibody (ab126388)

Please note: All products are "FOR RESEARCH USE ONLY. NOT FOR USE IN DIAGNOSTIC PROCEDURES"

Our Abpromise to you: Quality guaranteed and expert technical support

- Replacement or refund for products not performing as stated on the datasheet
- Valid for 12 months from date of delivery
- Response to your inquiry within 24 hours
- We provide support in Chinese, English, French, German, Japanese and Spanish
- Extensive multi-media technical resources to help you
- We investigate all quality concerns to ensure our products perform to the highest standards

If the product does not perform as described on this datasheet, we will offer a refund or replacement. For full details of the Abpromise, please visit <https://www.abcam.com/abpromise> or contact our technical team.

Terms and conditions

- Guarantee only valid for products bought direct from Abcam or one of our authorized distributors