


Product datasheet

Anti-R Cadherin antibody [EPR4836] ab109242

Recombinant RabMAb

2 Images

Overview

Product name	Anti-R Cadherin antibody [EPR4836]
Description	Rabbit monoclonal [EPR4836] to R Cadherin
Host species	Rabbit
Tested applications	Suitable for: WB Unsuitable for: Flow Cyt, ICC/IF or IHC-P
Species reactivity	Reacts with: Human Predicted to work with: Mouse, Rat 
Immunogen	Synthetic peptide. This information is proprietary to Abcam and/or its suppliers.
Positive control	HepG2 whole cell lysate (ab7900), fetal brain lysate, SH-SY5Y cell lysate
General notes	<p>This product is a recombinant monoclonal antibody, which offers several advantages including:</p> <ul style="list-style-type: none"> - High batch-to-batch consistency and reproducibility - Improved sensitivity and specificity - Long-term security of supply - Animal-free production <p>For more information see here.</p> <p>Our RabMAb[®] technology is a patented hybridoma-based technology for making rabbit monoclonal antibodies. For details on our patents, please refer to RabMAb[®] patents.</p>

Properties

Form	Liquid
Storage instructions	Shipped at 4°C. Store at -20°C. Stable for 12 months at -20°C.
Storage buffer	pH: 7.20 Preservative: 0.05% Sodium azide Constituents: 0.1% BSA, 40% Glycerol (glycerin, glycerine), 9.85% Tris glycine, 50% Tissue culture supernatant
Purity	Protein A purified
Clonality	Monoclonal
Clone number	EPR4836

Isotype IgG

Applications

The Abpromise guarantee Our **Abpromise guarantee** covers the use of ab109242 in the following tested applications. The application notes include recommended starting dilutions; optimal dilutions/concentrations should be determined by the end user.

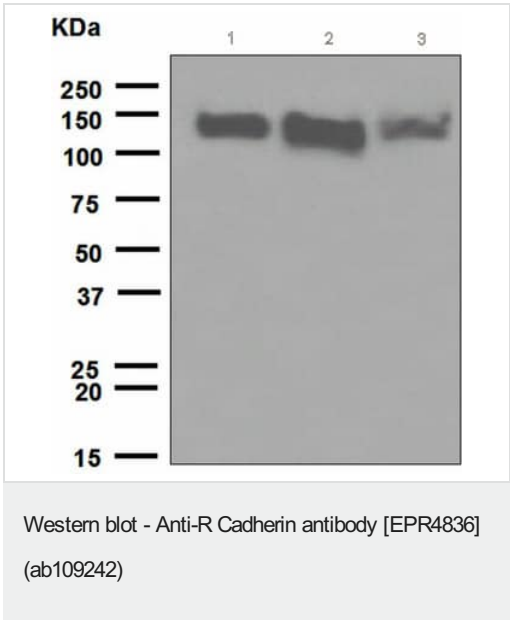
Application	Abreviews	Notes
WB		1/10000 - 1/50000. Predicted molecular weight: 100 kDa.

Application notes Is unsuitable for Flow Cyt, ICC/IF or IHC-P.

Target

Function	Cadherins are calcium dependent cell adhesion proteins. They preferentially interact with themselves in a homophilic manner in connecting cells; cadherins may thus contribute to the sorting of heterogeneous cell types. May play an important role in retinal development.
Tissue specificity	Expressed mainly in brain but also found in other tissues.
Sequence similarities	Contains 5 cadherin domains.
Cellular localization	Cell membrane.

Images



All lanes : Anti-R Cadherin antibody [EPR4836] (ab109242) at 1/10000 dilution

- Lane 1 :** HepG2 cell lysate
- Lane 2 :** Fetal brain lysate
- Lane 3 :** SH-SY5Y cell lysate

Lysates/proteins at 10 µg/ml per lane.

Predicted band size: 100 kDa

Why choose a recombinant antibody?



Research with confidence
Consistent and reproducible results



Long-term and scalable supply
Recombinant technology



Success from the first experiment
Confirmed specificity



Ethical standards compliant
Animal-free production

Anti-R Cadherin antibody [EPR4836] (ab109242)

Please note: All products are "FOR RESEARCH USE ONLY. NOT FOR USE IN DIAGNOSTIC PROCEDURES"

Our Abpromise to you: Quality guaranteed and expert technical support

- Replacement or refund for products not performing as stated on the datasheet
- Valid for 12 months from date of delivery
- Response to your inquiry within 24 hours
- We provide support in Chinese, English, French, German, Japanese and Spanish
- Extensive multi-media technical resources to help you
- We investigate all quality concerns to ensure our products perform to the highest standards

If the product does not perform as described on this datasheet, we will offer a refund or replacement. For full details of the Abpromise, please visit <https://www.abcam.com/abpromise> or contact our technical team.

Terms and conditions

- Guarantee only valid for products bought direct from Abcam or one of our authorized distributors