

Product datasheet

Anti-Rab-6 antibody ab95954

★★★★★ [6 Abreviews](#) [6 References](#) [6 Images](#)

Overview

Product name	Anti-Rab-6 antibody
Description	Rabbit polyclonal to Rab-6
Host species	Rabbit
Tested applications	Suitable for: WB, IHC-P, ICC/IF
Species reactivity	Reacts with: Mouse, Rat, Human
Immunogen	Recombinant full length protein corresponding to Human Rab-6. Database link: P20340
Positive control	WB: Transfected HeLa, A549, H1299, HCT 116 cells, mouse and rat brain tissue lysate; IHC-P: MDA-MB 468 xenograft tissue; IF: A549 cells.
General notes	<p>We have not tested the cross reactivity to RAB6B. ab95954 is raised against a full length RAB6A recombinant protein and may cross-react with RAB6B.</p> <p>The Life Science industry has been in the grips of a reproducibility crisis for a number of years. Abcam is leading the way in addressing this with our range of recombinant monoclonal antibodies and knockout edited cell lines for gold-standard validation. Please check that this product meets your needs before purchasing.</p> <p>If you have any questions, special requirements or concerns, please send us an inquiry and/or contact our Support team ahead of purchase. Recommended alternatives for this product can be found below, along with publications, customer reviews and Q&As</p>

Properties

Form	Liquid
Storage instructions	Shipped at 4°C. Store at +4°C short term (1-2 weeks). Upon delivery aliquot. Store at -20°C or -80°C. Avoid freeze / thaw cycle.
Storage buffer	pH: 7.00 Preservative: 0.025% Proclin 300 Constituents: 79% PBS, 20% Glycerol (glycerin, glycerine)
Purity	Immunogen affinity purified
Clonality	Polyclonal
Isotype	IgG

Applications

The Abpromise guarantee

Our **Abpromise guarantee** covers the use of ab95954 in the following tested applications.

The application notes include recommended starting dilutions; optimal dilutions/concentrations should be determined by the end user.

Application	Abreviews	Notes
WB	★★★★★ (3)	1/500 - 1/3000. Predicted molecular weight: 24 kDa.
IHC-P		1/100 - 1/500.
ICC/IF	★★★★★ (3)	1/100 - 1/200.

Target

Function

Protein transport. Regulator of membrane traffic from the Golgi apparatus towards the endoplasmic reticulum (ER). Has a low GTPase activity.

Tissue specificity

Ubiquitous.

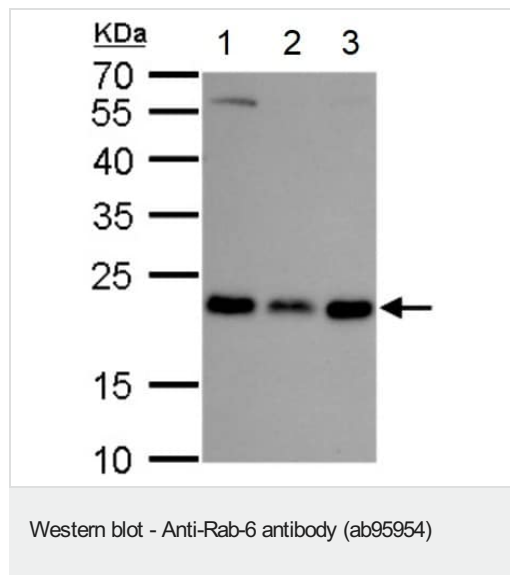
Sequence similarities

Belongs to the small GTPase superfamily. Rab family.

Cellular localization

Golgi apparatus membrane.

Images



All lanes : Anti-Rab-6 antibody (ab95954) at 1/1000 dilution

Lane 1 : A549 (human lung carcinoma cell line) whole cell lysate

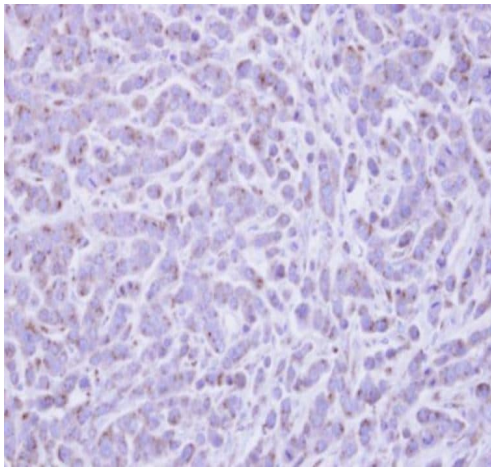
Lane 2 : H1299 (human non-small cell lung carcinoma cell line) whole cell lysate

Lane 3 : HCT 116 (human colorectal carcinoma cell line) whole cell lysate

Lysates/proteins at 30 µg per lane.

Predicted band size: 24 kDa

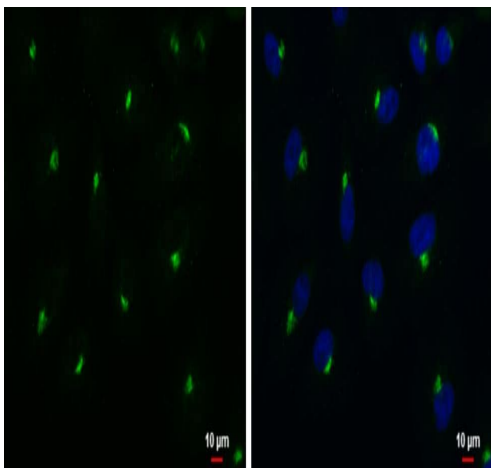
12 % SDS-PAGE



Immunohistochemical analysis of paraffin-embedded MDA-MB 468 xenograft tissue staining Rab-6 with ab95954 at 1:500 dilution.

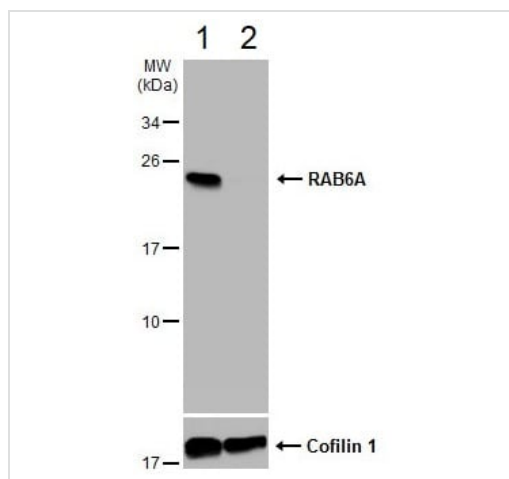
Antigen Retrieval: EDTA based buffer, pH 8.0, 15min.

Immunohistochemistry (Formalin/PFA-fixed paraffin-embedded sections) - Anti-Rab-6 antibody (ab95954)



Immunofluorescence analysis of 4% paraformaldehyde-fixed A549 (human lung carcinoma cell line) whole cell labelling Rab-6 protein at Golgi apparatus with ab95954 at 1:500 dilution. Blue: Hoechst 33342 staining. Scale bar = 10 μ m.

Immunocytochemistry/ Immunofluorescence - Anti-Rab-6 antibody (ab95954)



Western blot - Anti-Rab-6 antibody (ab95954)

All lanes : Anti-Rab-6 antibody (ab95954) at 1/500 dilution

Lane 1 : Wild-type HeLa (human epithelial cell line from cervix adenocarcinoma) whole cell lysate

Lane 2 : Rab-6 knockout HeLa whole cell lysate

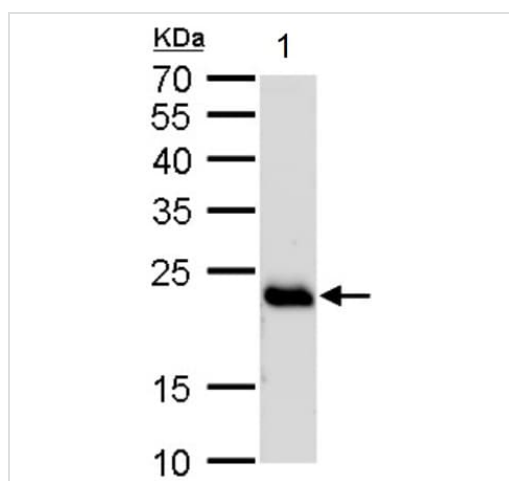
Lysates/proteins at 30 µg per lane.

Secondary

All lanes : HRP-conjugated anti-rabbit IgG

Predicted band size: 24 kDa

12% SDS-PAGE

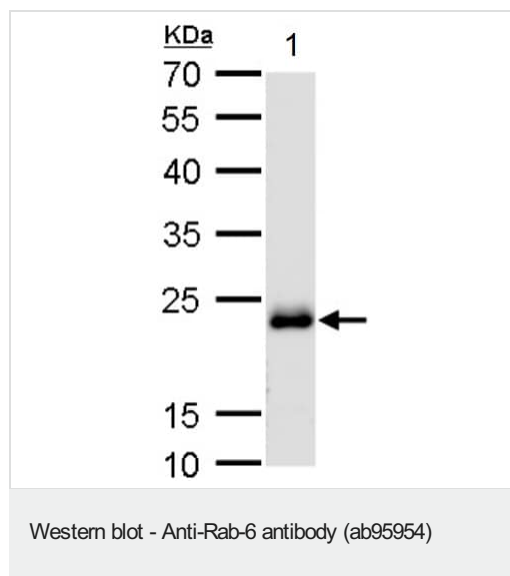


Western blot - Anti-Rab-6 antibody (ab95954)

Anti-Rab-6 antibody (ab95954) at 1/1000 dilution + Rat brain tissue lysate at 50 µg

Predicted band size: 24 kDa

12 % SDS-PAGE



Anti-Rab-6 antibody (ab95954) at 1/1000 dilution + Mouse brain tissue lysate at 50 µg

Predicted band size: 24 kDa

12 % SDS-PAGE

Please note: All products are "FOR RESEARCH USE ONLY. NOT FOR USE IN DIAGNOSTIC PROCEDURES"

Our Abpromise to you: Quality guaranteed and expert technical support

- Replacement or refund for products not performing as stated on the datasheet
- Valid for 12 months from date of delivery
- Response to your inquiry within 24 hours
- We provide support in Chinese, English, French, German, Japanese and Spanish
- Extensive multi-media technical resources to help you
- We investigate all quality concerns to ensure our products perform to the highest standards

If the product does not perform as described on this datasheet, we will offer a refund or replacement. For full details of the Abpromise, please visit <https://www.abcam.com/abpromise> or contact our technical team.

Terms and conditions

- Guarantee only valid for products bought direct from Abcam or one of our authorized distributors