




Product datasheet

Anti-Rab17 antibody ab77437

1 Image

Overview

Product name	Anti-Rab17 antibody
Description	Goat polyclonal to Rab17
Host species	Goat
Tested applications	Suitable for: WB
Species reactivity	Reacts with: Mouse Predicted to work with: Rat, Human 
Immunogen	Synthetic peptide: RKDSFHKAQQWLED , corresponding to internal sequence amino acids 102-115 of Mouse Rab17 (NP_033024.1).  Run BLAST with  Run BLAST with
Positive control	Mouse kidney membrane lysate
General notes	<p>The Life Science industry has been in the grips of a reproducibility crisis for a number of years. Abcam is leading the way in addressing this with our range of recombinant monoclonal antibodies and knockout edited cell lines for gold-standard validation. Please check that this product meets your needs before purchasing.</p> <p>If you have any questions, special requirements or concerns, please send us an inquiry and/or contact our Support team ahead of purchase. Recommended alternatives for this product can be found below, along with publications, customer reviews and Q&As</p>

Properties

Form	Liquid
Storage instructions	Shipped at 4°C. Store at +4°C short term (1-2 weeks). Upon delivery aliquot. Store at -20°C or -80°C. Avoid freeze / thaw cycle.
Storage buffer	pH: 7.30 Preservative: 0.02% Sodium azide Constituents: 0.5% BSA, Tris buffered saline
Purity	Immunogen affinity purified
Purification notes	Purified from goat serum by ammonium sulphate precipitation, followed by antigen affinity chromatography using the immunizing peptide.
Clonality	Polyclonal

Isotype

IgG

Applications

The Abpromise guarantee

Our **Abpromise guarantee** covers the use of ab77437 in the following tested applications.

The application notes include recommended starting dilutions; optimal dilutions/concentrations should be determined by the end user.

Application	Abreviews	Notes
WB		

Application notes

WB: Use at a concentration of 0.2 - 0.6 µg/ml. Detects a band of approximately 23 kDa (predicted molecular weight: 23 kDa).

Peptide ELISA: antibody detection limit dilution 1:64,000.

Not yet tested in other applications.

Optimal dilutions/concentrations should be determined by the end user.

Target

Function

Might be involved in transcellular transport.

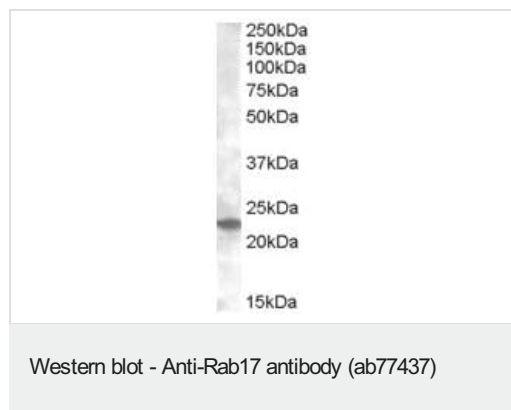
Sequence similarities

Belongs to the small GTPase superfamily. Rab family.

Cellular localization

Cell membrane.

Images



Anti-Rab17 antibody (ab77437) at 0.2 µg/ml + Mouse kidney lysate at 35 µg

Developed using the ECL technique.

Predicted band size: 23 kDa

Observed band size: 23 kDa

Please note: All products are "FOR RESEARCH USE ONLY. NOT FOR USE IN DIAGNOSTIC PROCEDURES"

Our Abpromise to you: Quality guaranteed and expert technical support

- Replacement or refund for products not performing as stated on the datasheet

- Valid for 12 months from date of delivery
- Response to your inquiry within 24 hours
- We provide support in Chinese, English, French, German, Japanese and Spanish
- Extensive multi-media technical resources to help you
- We investigate all quality concerns to ensure our products perform to the highest standards

If the product does not perform as described on this datasheet, we will offer a refund or replacement. For full details of the Abpromise, please visit <https://www.abcam.com/abpromise> or contact our technical team.

Terms and conditions

- Guarantee only valid for products bought direct from Abcam or one of our authorized distributors