


## Product datasheet

### Anti-Rab24 antibody [EPR9131] ab154824

Recombinant RabMAb

[1 References](#) [2 Images](#)

#### Overview

|                     |   |
|---------------------|---|
| Product name        | Anti-Rab24 antibody [EPR9131]   |
| Description         | Rabbit monoclonal [EPR9131] to Rab24  |
| Host species        | Rabbit  |
| Tested applications | <b>Suitable for:</b> WB<br><b>Unsuitable for:</b> Flow Cyt, ICC/IF, IHC-P or IP   |
| Species reactivity  | <b>Reacts with:</b> Human<br><b>Predicted to work with:</b> Mouse, Rat   |
| Immunogen           | Synthetic peptide. This information is proprietary to Abcam and/or its suppliers.   |
| Positive control    | 293T, SH-SY5Y and Fetal brain lysates.  |
| General notes       | <p>This product is a recombinant monoclonal antibody, which offers several advantages including:</p> <ul style="list-style-type: none"> <li>- High batch-to-batch consistency and reproducibility</li> <li>- Improved sensitivity and specificity</li> <li>- Long-term security of supply</li> <li>- Animal-free production</li> </ul> <p>For more information <a href="#">see here</a>.</p> <p>Our RabMAb<sup>®</sup> technology is a patented hybridoma-based technology for making rabbit monoclonal antibodies. For details on our patents, please refer to <a href="#">RabMAb<sup>®</sup> patents</a>.</p> |

#### Properties

|                      |  |
|----------------------|--|
| Form                 | Liquid   |
| Storage instructions | Shipped at 4°C. Store at -20°C.  |
| Storage buffer       | pH: 7.2<br>Preservative: 0.01% Sodium azide<br>Constituents: 9% PBS, 40% Glycerol (glycerin, glycerine), 0.05% BSA, 50% Tissue culture supernatant |
| Purity               | Tissue culture supernatant   |
| Clonality            | Monoclonal   |
| Clone number         | EPR9131  |

Isotype IgG

Applications

**The Abpromise guarantee** Our **Abpromise guarantee** covers the use of ab154824 in the following tested applications. The application notes include recommended starting dilutions; optimal dilutions/concentrations should be determined by the end user.

| Application | Abreviews | Notes   |
|-------------|-----------|---|
| WB          |           | 1/1000 - 1/10000. Predicted molecular weight: 23 kDa. |

**Application notes** Is unsuitable for Flow Cyt,ICC/IF,IHC-P or IP.

Target

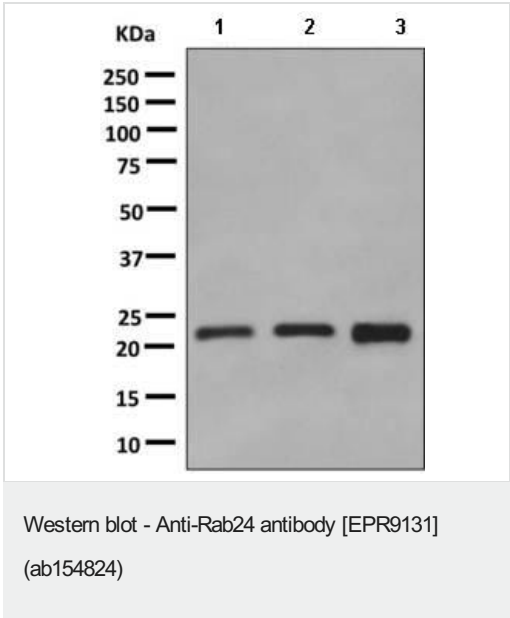
**Function** May be involved in autophagy-related processes.

**Sequence similarities** Belongs to the small GTPase superfamily. Rab family.

**Post-translational modifications** Isoprenylation is inefficient compared to other Rab family members.

**Cellular localization** Cytoplasm > cytosol. Membrane. Only about 20-25% is recovered in the particulate fraction.

Images



**All lanes** : Anti-Rab24 antibody [EPR9131] (ab154824) at 1/1000 dilution

**Lane 1** : 293T cell lysate  
**Lane 2** : SH-SY5Y cell lysate  
**Lane 3** : Fetal brain lysate

Lysates/proteins at 10 µg per lane.

**Secondary**  
**All lanes** : Goat anti-rabbit HRP at 1/2000 dilution

**Predicted band size:** 23 kDa

### Why choose a recombinant antibody?



**Research with confidence**  
Consistent and reproducible results



**Long-term and scalable supply**  
Recombinant technology



**Success from the first experiment**  
Confirmed specificity



**Ethical standards compliant**  
Animal-free production

Anti-Rab24 antibody [EPR9131] (ab154824)

**Please note:** All products are "FOR RESEARCH USE ONLY. NOT FOR USE IN DIAGNOSTIC PROCEDURES"

### Our Abpromise to you: Quality guaranteed and expert technical support

---

- Replacement or refund for products not performing as stated on the datasheet
- Valid for 12 months from date of delivery
- Response to your inquiry within 24 hours
- We provide support in Chinese, English, French, German, Japanese and Spanish
- Extensive multi-media technical resources to help you
- We investigate all quality concerns to ensure our products perform to the highest standards

If the product does not perform as described on this datasheet, we will offer a refund or replacement. For full details of the Abpromise, please visit <https://www.abcam.com/abpromise> or contact our technical team.

### Terms and conditions

---

- Guarantee only valid for products bought direct from Abcam or one of our authorized distributors