


Product datasheet

Anti-Rab25 antibody ab45855

3 Images

Overview

Product name	Anti-Rab25 antibody
Description	Rabbit polyclonal to Rab25
Host species	Rabbit
Specificity	From Mar 2024, QC testing of replenishment batches of this polyclonal changed. All tested and expected application and reactive species combinations are still covered by our Abcam product promise. However, we no longer test all applications. For more information on a specific batch, please contact our Scientific Support who will be happy to help.
Tested applications	Suitable for: ICC/IF, WB
Species reactivity	Reacts with: Rat, Human Predicted to work with: Mouse, Rabbit, Horse, Dog, Chimpanzee 
Immunogen	Synthetic peptide conjugated to KLH derived from within residues 150 to the C-terminus of Human Rab25. Read Abcam's proprietary immunogen policy (Peptide available as ab69566 .)
Positive control	This antibody gave a positive signal in the following Human Whole Cell lysates: MDA-MB-361, MCF7, T47D, HeLa, HepG2, Y79, SW480 and Jurkat. This antibody also gave a positive signal in the following Tissue lysates: Human Breast Tumour and Rat Thymus.
General notes	<p>The Life Science industry has been in the grips of a reproducibility crisis for a number of years. Abcam is leading the way in addressing this with our range of recombinant monoclonal antibodies and knockout edited cell lines for gold-standard validation. Please check that this product meets your needs before purchasing.</p> <p>If you have any questions, special requirements or concerns, please send us an inquiry and/or contact our Support team ahead of purchase. Recommended alternatives for this product can be found below, along with publications, customer reviews and Q&As</p>

Properties

Form	Liquid
Storage instructions	Shipped at 4°C. Store at +4°C short term (1-2 weeks). Upon delivery aliquot. Store at -20°C or -80°C. Avoid freeze / thaw cycle.
Storage buffer	<p>pH: 7.40</p> <p>Preservative: 0.02% Sodium azide</p> <p>Constituent: PBS</p>

Batches of this product that have a concentration < 1mg/ml may have BSA added as a stabilising agent. If you would like information about the formulation of a specific lot, please contact our scientific support team who will be happy to help.

Purity	Immunogen affinity purified
Clonality	Polyclonal
Isotype	IgG

Applications

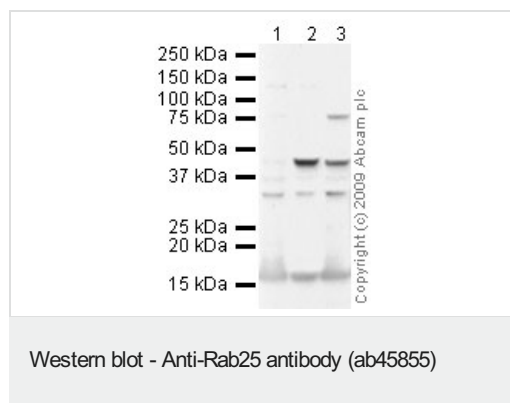
The Abpromise guarantee Our **Abpromise guarantee** covers the use of ab45855 in the following tested applications. The application notes include recommended starting dilutions; optimal dilutions/concentrations should be determined by the end user.

Application	Abreviews	Notes
ICC/IF		Use a concentration of 5 µg/ml.
WB		Use a concentration of 1 µg/ml. Detects a band of approximately 32 kDa (predicted molecular weight: 23 kDa).

Target

Function	Involved in the regulation of cell survival. Promotes invasive migration of cells in which it functions to localize and maintain integrin alpha-V/beta-1 at the tips of extending pseudopodia (PubMed:17925226). Involved in the regulation of epithelial morphogenesis through the control of CLDN4 expression and localization at tight junctions (By similarity). May selectively regulate the apical recycling pathway. Together with MYO5B regulates transcytosis.
Tissue specificity	Expressed in ovarian epithelium (NOE) and breast tissue. Expressed in ovarian cancer; expression is increased relative to NOE cells. Expression in ovarian cancer is stage dependent, with stage III and stage IV showing higher levels than early stage cancers. Expressed in breast cancer; expression is increased relative to normal breast tissue.
Sequence similarities	Belongs to the small GTPase superfamily. Rab family.
Cellular localization	Cell membrane. Cell projection, pseudopodium membrane. Cytoplasmic vesicle. Colocalizes with integrin alpha-V/beta-1 in vesicles at the pseudopodial tips.

Images



All lanes : Anti-Rab25 antibody (ab45855) at 1 µg/ml

Lane 1 : MDA-MB-361 (Human breast adenocarcinoma cell line)

Whole Cell Lysate

Lane 2 : MCF7 (Human breast adenocarcinoma cell line) Whole Cell Lysate

Lane 3 : T47D (Human ductal breast epithelial tumor cell line)

Whole Cell Lysate

Lysates/proteins at 10 µg per lane.

Secondary

All lanes : Goat polyclonal to Rabbit IgG - H&L - Pre-Adsorbed (HRP) at 1/3000 dilution

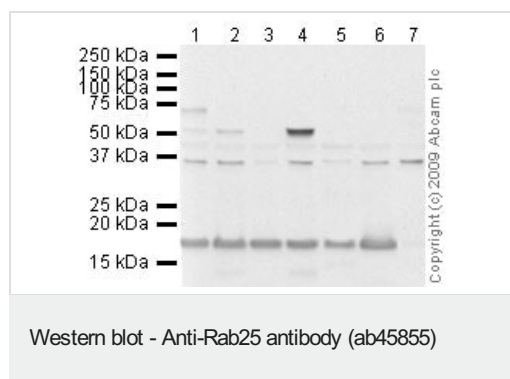
Developed using the ECL technique.

Performed under reducing conditions.

Predicted band size: 23 kDa

Observed band size: 32 kDa

Additional bands at: 16 kDa, 45 kDa, 75 kDa. We are unsure as to the identity of these extra bands.



All lanes : Anti-Rab25 antibody (ab45855) at 1 µg/ml

Lane 1 : HeLa (Human epithelial carcinoma cell line) Whole Cell Lysate

Lane 2 : HepG2 (Human hepatocellular liver carcinoma cell line) Whole Cell Lysate

Lane 3 : Y79 (Human retinoblastoma cell line) Whole Cell Lysate

Lane 4 : SW480 whole cell lysate ([ab3957](#))

Lane 5 : Rat Thymus Tissue Lysate

Lane 6 : Jurkat (Human T cell lymphoblast-like cell line) Whole Cell Lysate

Lane 7 : Human breast tumor tissue lysate - total protein ([ab30091](#))

Lysates/proteins at 10 µg per lane.

Secondary

All lanes : Goat polyclonal to Rabbit IgG - H&L - Pre-Adsorbed (HRP) at 1/3000 dilution

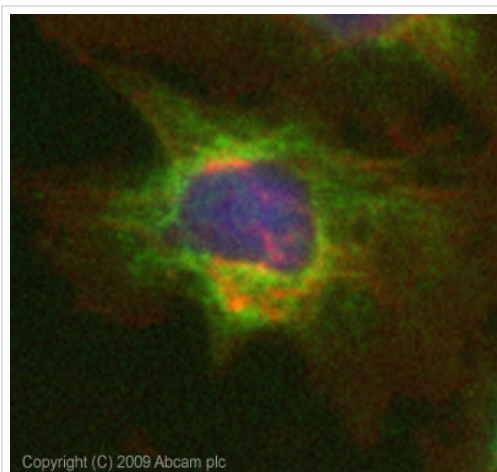
Developed using the ECL technique.

Performed under reducing conditions.

Predicted band size: 23 kDa

Observed band size: 36 kDa

Additional bands at: 17 kDa, 50 kDa, 70 kDa. We are unsure as to the identity of these extra bands.



Immunocytochemistry/ Immunofluorescence - Anti-Rab25 antibody (ab45855)

ICC/IF image of ab45855 stained HeLa cells. The cells were 100% methanol fixed (5 min) and then incubated in 1%BSA / 10% normal goat serum / 0.3M glycine in 0.1% PBS-Tween for 1h to permeabilise the cells and block non-specific protein-protein interactions. The cells were then incubated with the antibody (ab45855, 5µg/ml) overnight at +4°C. The secondary antibody (green) was Alexa Fluor® 488 goat anti-rabbit IgG (H+L) used at a 1/1000 dilution for 1h. Alexa Fluor® 594 WGA was used to label plasma membranes (red) at a 1/200 dilution for 1h. DAPI was used to stain the cell nuclei (blue) at a concentration of 1.43µM. This antibody also gave a positive result in 100% methanol fixed (5 min) Hek293 cells at 5µg/ml, and in 4% PFA fixed (10 min) HeLa and MCF7 cells at 5µg/ml.

Please note: All products are "FOR RESEARCH USE ONLY. NOT FOR USE IN DIAGNOSTIC PROCEDURES"

Our Abpromise to you: Quality guaranteed and expert technical support

- Replacement or refund for products not performing as stated on the datasheet
- Valid for 12 months from date of delivery
- Response to your inquiry within 24 hours
- We provide support in Chinese, English, French, German, Japanese and Spanish
- Extensive multi-media technical resources to help you
- We investigate all quality concerns to ensure our products perform to the highest standards

If the product does not perform as described on this datasheet, we will offer a refund or replacement. For full details of the Abpromise, please visit <https://www.abcam.com/abpromise> or contact our technical team.

Terms and conditions

- Guarantee only valid for products bought direct from Abcam or one of our authorized distributors