


Product datasheet

Anti-Rab4 antibody ab230301

3 Images

Overview

Product name	Anti-Rab4 antibody
Description	Rabbit polyclonal to Rab4
Host species	Rabbit
Tested applications	Suitable for: WB, IHC-P
Species reactivity	Reacts with: Human Predicted to work with: Mouse, Rat 
Immunogen	Synthetic peptide corresponding to Human Rab4 (C terminal). Database link: P20338
Positive control	IHC-P: Human pancreas and liver tissues. WB: HeLa cell lysate.
General notes	<p>The Life Science industry has been in the grips of a reproducibility crisis for a number of years. Abcam is leading the way in addressing this with our range of recombinant monoclonal antibodies and knockout edited cell lines for gold-standard validation. Please check that this product meets your needs before purchasing.</p> <p>If you have any questions, special requirements or concerns, please send us an inquiry and/or contact our Support team ahead of purchase. Recommended alternatives for this product can be found below, along with publications, customer reviews and Q&As</p>

Properties

Form	Liquid
Storage instructions	Shipped at 4°C. Store at +4°C short term (1-2 weeks). Upon delivery aliquot. Store at -20°C long term. Avoid freeze / thaw cycle.
Storage buffer	pH: 7.4
Purity	Whole antiserum.
Clonality	Whole antiserum
Clonality	Polyclonal
Isotype	IgG

Applications

The Abpromise guarantee

Our **Abpromise guarantee** covers the use of ab230301 in the following tested applications.

The application notes include recommended starting dilutions; optimal dilutions/concentrations should be determined by the end user.

Application	Abreviews	Notes
WB		1/1000 - 1/2000. Detects a band of approximately 26 kDa (predicted molecular weight: 24 kDa).
IHC-P		1/200. Perform heat mediated antigen retrieval before commencing with IHC staining protocol.

Target

Function

Protein transport. Probably involved in vesicular traffic.

Sequence similarities

Belongs to the small GTPase superfamily. Rab family.

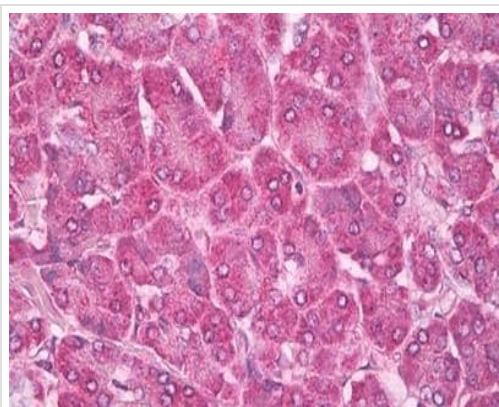
Post-translational modifications

Phosphorylated by CDK1 kinase during mitosis.

Cellular localization

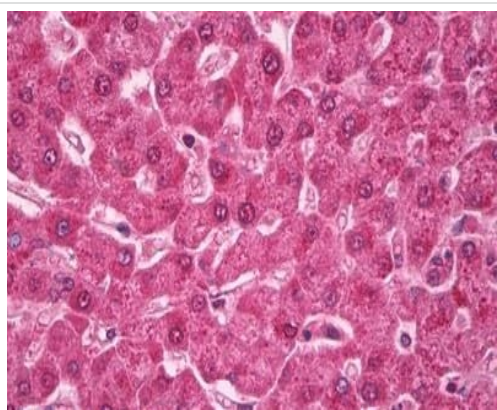
Membrane. Cytoplasm. Generally associated with membranes. Cytoplasmic when phosphorylated by CDK1.

Images



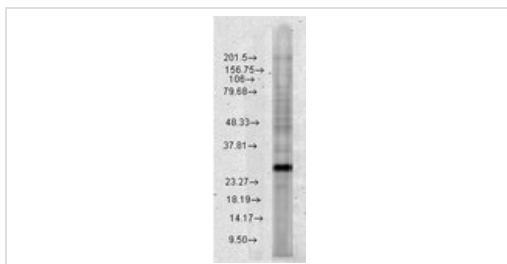
Formalin-fixed, paraffin-embedded human pancreas tissue stained for Rab4 using ab230301 at 1/200 dilution in immunohistochemical analysis.

Immunohistochemistry (Formalin/PFA-fixed paraffin-embedded sections) - Anti-Rab4 antibody (ab230301)



Immunohistochemistry (Formalin/PFA-fixed paraffin-embedded sections) - Anti-Rab4 antibody (ab230301)

Formalin-fixed, paraffin-embedded human liver tissue stained for Rab4 using ab230301 at 1/200 dilution in immunohistochemical analysis.



Western blot - Anti-Rab4 antibody (ab230301)

Anti-Rab4 antibody (ab230301) at 1/1000 dilution + HeLa (human epithelial cell line from cervix adenocarcinoma) cell lysate

Predicted band size: 24 kDa

Observed band size: 26 kDa

Please note: All products are "FOR RESEARCH USE ONLY. NOT FOR USE IN DIAGNOSTIC PROCEDURES"

Our Abpromise to you: Quality guaranteed and expert technical support

- Replacement or refund for products not performing as stated on the datasheet
- Valid for 12 months from date of delivery
- Response to your inquiry within 24 hours
- We provide support in Chinese, English, French, German, Japanese and Spanish
- Extensive multi-media technical resources to help you
- We investigate all quality concerns to ensure our products perform to the highest standards

If the product does not perform as described on this datasheet, we will offer a refund or replacement. For full details of the Abpromise, please visit <https://www.abcam.com/abpromise> or contact our technical team.

Terms and conditions

- Guarantee only valid for products bought direct from Abcam or one of our authorized distributors