

Anti-Rab4 antibody - Early Endosome Marker ab13252

★★★★★ [6 Abreviews](#) [36 References](#) [2 Images](#)

Overview

Product name	Anti-Rab4 antibody - Early Endosome Marker
Description	Rabbit polyclonal to Rab4 - Early Endosome Marker
Host species	Rabbit
Specificity	This antibody is very specific for Rab4. To our knowledge this antibody does not cross-react with other Rab proteins. However, as there are dozens of different proteins in the Rab family, not every single one has been tested for cross-reactivity with this antibody.
Tested applications	Suitable for: WB, ICC
Species reactivity	Reacts with: Rat
Immunogen	Fusion protein corresponding to Human Rab4. Database link: P20338
General notes	<p>The Life Science industry has been in the grips of a reproducibility crisis for a number of years. Abcam is leading the way in addressing this with our range of recombinant monoclonal antibodies and knockout edited cell lines for gold-standard validation. Please check that this product meets your needs before purchasing.</p> <p>If you have any questions, special requirements or concerns, please send us an inquiry and/or contact our Support team ahead of purchase. Recommended alternatives for this product can be found below, along with publications, customer reviews and Q&As</p>

Properties

Form	Liquid
Storage instructions	Shipped at 4°C. Store at +4°C short term (1-2 weeks). Upon delivery aliquot. Store at -20°C or -80°C. Avoid freeze / thaw cycle.
Storage buffer	Preservative: 0.09% Sodium azide Constituents: PBS, 50% Glycerol (glycerin, glycerine)
Purity	Protein A purified
Clonality	Polyclonal
Isotype	IgG

Applications

The Abpromise guarantee

Our **Abpromise guarantee** covers the use of ab13252 in the following tested applications.

The application notes include recommended starting dilutions; optimal dilutions/concentrations should be determined by the end user.

Application	Abreviews	Notes
WB	★★★★★ (1)	1/1000. Detects a band of approximately 26 kDa (predicted molecular weight: 25.6 kDa).
ICC	★★★★★ (1)	1/200 - 1/500.

Target

Function

Protein transport. Probably involved in vesicular traffic.

Sequence similarities

Belongs to the small GTPase superfamily. Rab family.

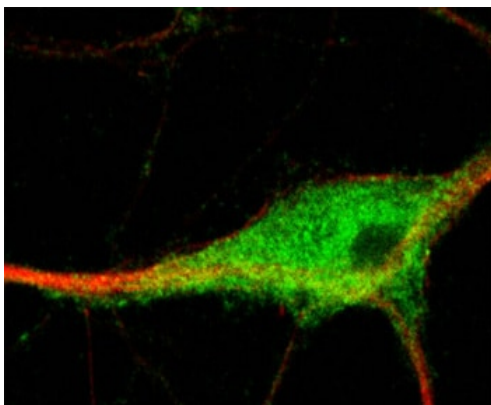
Post-translational modifications

Phosphorylated by CDK1 kinase during mitosis.

Cellular localization

Membrane. Cytoplasm. Generally associated with membranes. Cytoplasmic when phosphorylated by CDK1.

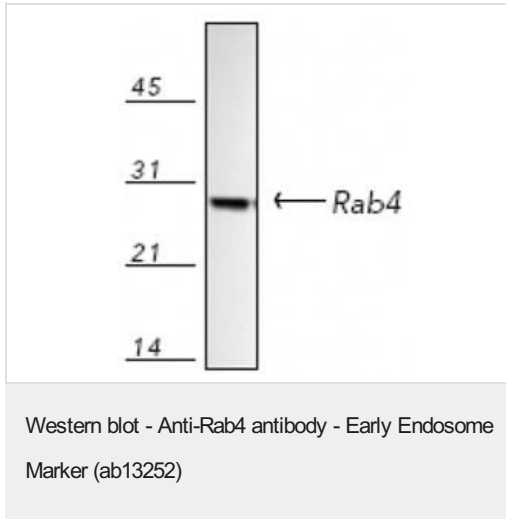
Images



Immunocytochemistry - Anti-Rab4 antibody - Early Endosome Marker (ab13252)

This image is courtesy of Randal Moldrich, CNRS UMR7637, ESPCI, France

ab13252, rabbit polyclonal to Rab4 was used in fixed primary cultures of rat hippocampal neurons (embryonic day 18) at a dilution of 1/200. A secondary goat anti-rabbit antibody was used for detection (Alexa Fluor 488; 1/200; green). Confocal microscopy revealed typically punctuate immunofluorescence expected of Rab4 in these neurons. The red colour labelling is that of monoclonal mouse anti-beta-tubulin II at a 1/400 dilution, followed by secondary goat anti-mouse Alexa Fluor 568.



Anti-Rab4 antibody - Early Endosome Marker (ab13252) at 1/1000 dilution + Lysates prepared from rat brain tissue

Predicted band size: 25.6 kDa

Please note: All products are "FOR RESEARCH USE ONLY. NOT FOR USE IN DIAGNOSTIC PROCEDURES"

Our Abpromise to you: Quality guaranteed and expert technical support

- Replacement or refund for products not performing as stated on the datasheet
- Valid for 12 months from date of delivery
- Response to your inquiry within 24 hours
- We provide support in Chinese, English, French, German, Japanese and Spanish
- Extensive multi-media technical resources to help you
- We investigate all quality concerns to ensure our products perform to the highest standards

If the product does not perform as described on this datasheet, we will offer a refund or replacement. For full details of the Abpromise, please visit <https://www.abcam.com/abpromise> or contact our technical team.

Terms and conditions

- Guarantee only valid for products bought direct from Abcam or one of our authorized distributors