




## Product datasheet

### Anti-Rab5 antibody ab13253

★★★★★ [3 Abreviews](#) [32 References](#) [4 Images](#)

#### Overview

|                            |   |
|----------------------------|---|
| <b>Product name</b>        | Anti-Rab5 antibody  |
| <b>Description</b>         | Rabbit polyclonal to Rab5   |
| <b>Host species</b>        | Rabbit  |
| <b>Tested applications</b> | <b>Suitable for:</b> IHC-P, ICC/IF  |
| <b>Species reactivity</b>  | <b>Reacts with:</b> Mouse, Rat, Human<br><b>Predicted to work with:</b> Dog    |
| <b>Immunogen</b>           | Synthetic peptide corresponding to Human Rab5 aa 150-250 conjugated to keyhole limpet haemocyanin.<br>Database link: <a href="#">P20339</a><br><div>  <a href="#">Run BLAST with</a>  <a href="#">Run BLAST with</a> </div>   |
| <b>Positive control</b>    | ICC/IF: Rat hippocampal neurons (embryonic day 18), HEK cells, HeLa cells. IHC-P: Mouse back skin tissue section.   |
| <b>General notes</b>       | <p>The Life Science industry has been in the grips of a reproducibility crisis for a number of years. Abcam is leading the way in addressing this with our range of recombinant monoclonal antibodies and knockout edited cell lines for gold-standard validation. Please check that this product meets your needs before purchasing.</p> <p>If you have any questions, special requirements or concerns, please send us an inquiry and/or contact our Support team ahead of purchase. Recommended alternatives for this product can be found below, along with publications, customer reviews and Q&amp;As</p> |

#### Properties

|                             |  |
|-----------------------------|--|
| <b>Form</b>                 | Liquid   |
| <b>Storage instructions</b> | Shipped at 4°C. Store at +4°C short term (1-2 weeks). Upon delivery aliquot. Store at -20°C or -80°C. Avoid freeze / thaw cycle. |
| <b>Storage buffer</b>       | Preservative: 0.09% Sodium azide<br>Constituents: 2.68% PBS, 50% Glycerol (glycerin, glycerine)                                  |
| <b>Purity</b>               | Protein A purified   |
| <b>Clonality</b>            | Polyclonal   |
| <b>Isotype</b>              | IgG  |

## Applications

### The Abpromise guarantee

Our **Abpromise guarantee** covers the use of ab13253 in the following tested applications.

The application notes include recommended starting dilutions; optimal dilutions/concentrations should be determined by the end user.

| Application | Abreviews | Notes                                      |
|-------------|-----------|--|
| IHC-P       |           | 1/100. Use Bouin's fixative to fix tissue. |
| ICC/IF      |           | 1/80.                                      |

## Target

### Function

Required for the fusion of plasma membranes and early endosomes.

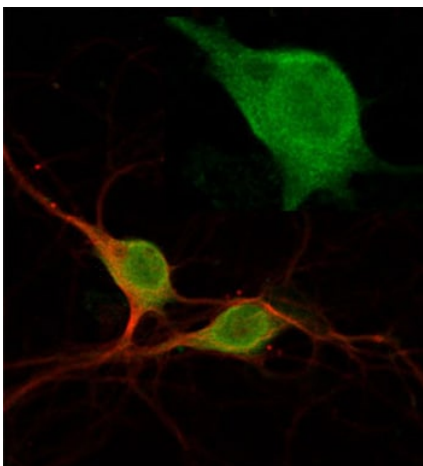
### Sequence similarities

Belongs to the small GTPase superfamily. Rab family.

### Cellular localization

Cell membrane. Early endosome membrane. Melanosome. Enriched in stage I melanosomes.

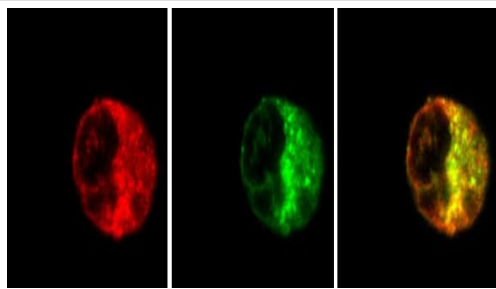
## Images



Confocal microscopy of fixed primary cultures of rat hippocampal neurons (embryonic day 18) showing immunocytochemical labelling of polyclonal rabbit anti-Rab5 (Abcam ab13253, 1/200; Alexa Fluor 488; 1/200; green) and monoclonal mouse anti-tubulin-II (Alexa Fluor 568 1/200; red). Magnification 63x; insert 180x.

Immunocytochemistry/ Immunofluorescence - Anti-Rab5 antibody (ab13253)

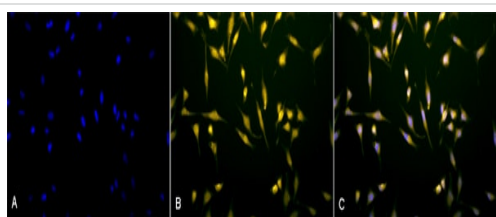
This image is courtesy of Randal Moldrich, CNRS UMR7637, ESPCI, France



Immunocytochemistry/ Immunofluorescence - Anti-Rab5 antibody (ab13253)

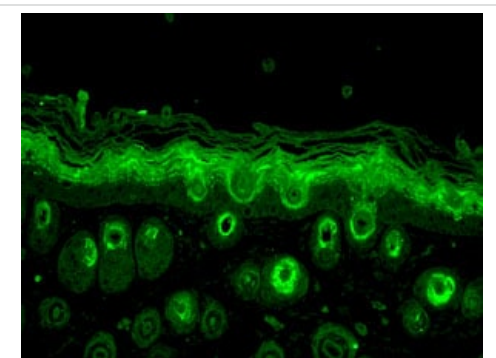
This image is courtesy of Randal Moldrich, CNRS UMR7637, ESPCI, France

ab13253 Rabbit polyclonal to Rab5 was used in fixed HEK cells that had been transfected with Rab5-GFP. Fluorescence microscopy of fixed Rab5-transfected HEK cells showing (left to right) immunocytochemical labelling of rabbit polyclonal Rab5 (ab13253, 1/500; Cy3; red), and Rab5-GFP (green) with their overlay (far right). Scale bar = 7  $\mu$ m. Showing good co-localisation.



Immunocytochemistry/ Immunofluorescence - Anti-Rab5 antibody (ab13253)

Immunofluorescent analysis of 2% paraformaldehyde fixed Human cervical cancer cell line (HeLa) for 20min at RT, labelling Rab5 with ab13253 at 1/80 dilution for 12 hours at 4°C, followed by secondary antibody Goat Anti-Rabbit (FITC) (green) at 1/200 dilution for 2 hours at RT. Counterstain: DAPI (blue) nuclear stain at 1:40000 for 2 hours at RT. Image showing cytoplasmic staining on HeLa cells. (A) DAPI (blue) nuclear stain. (B) Anti-Rab5 Antibody (green). (C) Composite image.



Immunohistochemistry (Formalin/PFA-fixed paraffin-embedded sections) - Anti-Rab5 antibody (ab13253)

ab13253 at 1/100 dilution staining Rab5 in mouse back skin tissue section by Immunohistochemistry (Bouin's fixative fixed paraffin-embedded tissue section). Antigen retrieval was done by microwave in citrate buffer. A Fluorophore-conjugated goat anti-rabbit secondary was used at 1/50 dilution.

**Please note:** All products are "FOR RESEARCH USE ONLY. NOT FOR USE IN DIAGNOSTIC PROCEDURES"

### Our Abpromise to you: Quality guaranteed and expert technical support

- Replacement or refund for products not performing as stated on the datasheet
- Valid for 12 months from date of delivery
- Response to your inquiry within 24 hours
- We provide support in Chinese, English, French, German, Japanese and Spanish
- Extensive multi-media technical resources to help you
- We investigate all quality concerns to ensure our products perform to the highest standards

If the product does not perform as described on this datasheet, we will offer a refund or replacement. For full details of the Abpromise, please visit <https://www.abcam.com/abpromise> or contact our technical team.

#### **Terms and conditions**

---

- Guarantee only valid for products bought direct from Abcam or one of our authorized distributors