

Product datasheet

Anti-Rab5A antibody [3A4] - Early Endosome Marker ab66746

KO VALIDATED

★★★★★ 1 Abreviews 9 References 3 Images

Overview

Product name	Anti-Rab5A antibody [3A4] - Early Endosome Marker
Description	Mouse monoclonal [3A4] to Rab5A - Early Endosome Marker
Host species	Mouse
Tested applications	Suitable for: WB Unsuitable for: ICC/IF
Species reactivity	Reacts with: Mouse, Human
Immunogen	Recombinant fragment corresponding to Human Rab5a aa 1-250.
Positive control	WB: Extracts of mouse and human brain. ICC/IF: U87MG cells.
General notes	<p>This product was changed from ascites to tissue culture supernatant on 24/01/2019. Please note that the dilutions may need to be adjusted accordingly. If you have any questions, please do not hesitate to contact our scientific support team.</p> <p>The Life Science industry has been in the grips of a reproducibility crisis for a number of years. Abcam is leading the way in addressing this with our range of recombinant monoclonal antibodies and knockout edited cell lines for gold-standard validation. Please check that this product meets your needs before purchasing.</p> <p>If you have any questions, special requirements or concerns, please send us an inquiry and/or contact our Support team ahead of purchase. Recommended alternatives for this product can be found below, along with publications, customer reviews and Q&As</p>

Properties

Form	Liquid
Storage instructions	Shipped at 4°C. Upon delivery aliquot and store at -20°C. Avoid freeze / thaw cycles.
Storage buffer	pH: 7.40 Preservative: 0.1% Sodium azide Constituent: PBS
Purity	Protein G purified
Clonality	Monoclonal

Clone number	3A4
Myeloma	Sp2/0
Isotype	IgG2b
Light chain type	kappa

Applications

The Abpromise guarantee Our **Abpromise guarantee** covers the use of ab66746 in the following tested applications. The application notes include recommended starting dilutions; optimal dilutions/concentrations should be determined by the end user.

Application	Abreviews	Notes
WB		Use at an assay dependent concentration. Detects a band of approximately 24 kDa (predicted molecular weight: 24 kDa).

Application notes Is unsuitable for ICC/IF.

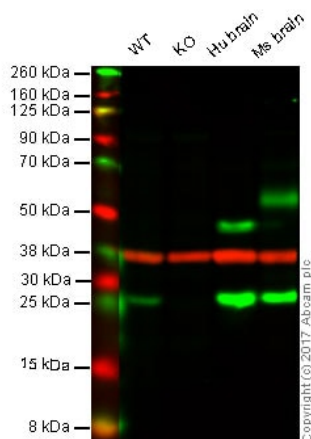
Target

Function The small GTPases Rab are key regulators of intracellular membrane trafficking, from the formation of transport vesicles to their fusion with membranes. Rabs cycle between an inactive GDP-bound form and an active GTP-bound form that is able to recruit to membranes different sets of downstream effectors directly responsible for vesicle formation, movement, tethering and fusion. RAB5A is required for the fusion of plasma membranes and early endosomes (PubMed:10818110, PubMed:14617813, PubMed:16410077, PubMed:15378032). Contributes to the regulation of filopodia extension (PubMed:14978216). Required for the exosomal release of SDCBP, CD63, PDCD6IP and syndecan (PubMed:22660413). Regulates maturation of apoptotic cell-containing phagosomes, probably downstream of DYN2 and PIK3C3.

Sequence similarities Belongs to the small GTPase superfamily. Rab family.

Cellular localization Cell membrane. Early endosome membrane. Melanosome. Cytoplasmic vesicle. Cell projection, ruffle. Membrane. Cytoplasm, cytosol. Cytoplasmic vesicle, phagosome membrane. Enriched in stage I melanosomes (PubMed:17081065). Alternates between membrane-bound and cytosolic forms (Probable).

Images



Western blot - Anti-Rab5 antibody [3A4] - Drosophila
Early Endosome Marker (ab66746)

Lane 1: Wild type HAP1 whole cell lysate (20 μ g)

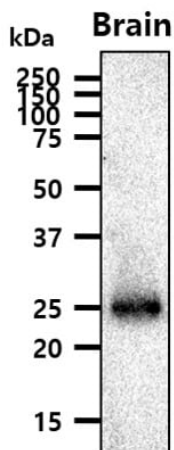
Lane 2: Rab5 knockout HAP1 whole cell lysate (20 μ g)

Lane 3: Hu brain whole cell lysate (20 μ g)

Lane 4: Ms brain whole cell lysate (20 μ g)

Lanes 1 - 4: Merged signal (red and green). Green - ab66746 observed at 25 kDa. Red - loading control, [ab181602](#), observed at 37 kDa.

This image was produced using the ascites version of this antibody.



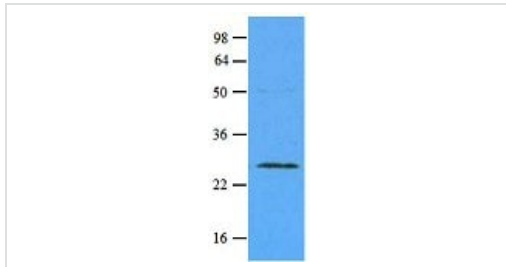
Western blot - Anti-Rab5 antibody [3A4] - Drosophila
Early Endosome Marker (ab66746)

Anti-Rab5A antibody [3A4] - Early Endosome Marker (ab66746) at 1/500 dilution + mouse brain at 45 μ g

Secondary

goat anti-mouse secondary antibody conjugated to HRP

Predicted band size: 24 kDa



Western blot - Anti-Rab5 antibody [3A4] - Drosophila
Early Endosome Marker (ab66746)

Anti-Rab5A antibody [3A4] - Early Endosome Marker (ab66746) at
1/500 dilution + extracts of mouse brain at 45 µg

Secondary

HRP-conjugated goat anti-mouse

Developed using the ECL technique.

Predicted band size: 24 kDa

Observed band size: 24 kDa

This image was produced using the ascites version of this antibody.

Please note: All products are "FOR RESEARCH USE ONLY. NOT FOR USE IN DIAGNOSTIC PROCEDURES"

Our Abpromise to you: Quality guaranteed and expert technical support

- Replacement or refund for products not performing as stated on the datasheet
- Valid for 12 months from date of delivery
- Response to your inquiry within 24 hours
- We provide support in Chinese, English, French, German, Japanese and Spanish
- Extensive multi-media technical resources to help you
- We investigate all quality concerns to ensure our products perform to the highest standards

If the product does not perform as described on this datasheet, we will offer a refund or replacement. For full details of the Abpromise, please visit <https://www.abcam.com/abpromise> or contact our technical team.

Terms and conditions

- Guarantee only valid for products bought direct from Abcam or one of our authorized distributors