


Anti-Rab5A antibody - C-terminal ab228770

4 Images

Overview

Product name	Anti-Rab5A antibody - C-terminal
Description	Rabbit polyclonal to Rab5A - C-terminal
Host species	Rabbit
Tested applications	Suitable for: WB, IP, IHC-P
Species reactivity	Reacts with: Mouse, Human Predicted to work with: Rat, Dog, Rhesus monkey 
Immunogen	Synthetic peptide within Human Rab5A (C terminal). The exact immunogen sequence used to generate this antibody is proprietary information. If additional detail on the immunogen is needed to determine the suitability of the antibody for your needs, please contact our Scientific Support team to discuss your requirements. (Carrier-protein conjugated). Database link: <u>P20339</u>
Positive control	WB: A431 and Raji whole cell lysate; Mouse brain lysate. IP: HeLa whole cell lysate. IHC-P: U-87 MG xenograft.
General notes	<p>The Life Science industry has been in the grips of a reproducibility crisis for a number of years. Abcam is leading the way in addressing this with our range of recombinant monoclonal antibodies and knockout edited cell lines for gold-standard validation. Please check that this product meets your needs before purchasing.</p> <p>If you have any questions, special requirements or concerns, please send us an inquiry and/or contact our Support team ahead of purchase. Recommended alternatives for this product can be found below, along with publications, customer reviews and Q&As</p>

Properties

Form	Liquid
Storage instructions	Shipped at 4°C. Store at +4°C short term (1-2 weeks). Upon delivery aliquot. Store at -20°C long term. Avoid freeze / thaw cycle.
Storage buffer	pH: 7.00 Preservative: 0.01% Thimerosal (merthiolate) Constituents: 79.99% PBS, 20% Glycerol (glycerin, glycerine)
Purity	Immunogen affinity purified
Clonality	Polyclonal

Isotype

IgG

Applications

The Abpromise guarantee

Our **Abpromise guarantee** covers the use of ab228770 in the following tested applications.

The application notes include recommended starting dilutions; optimal dilutions/concentrations should be determined by the end user.

Application	Abreviews	Notes
WB		1/500 - 1/3000. Predicted molecular weight: 24 kDa.
IP		1/100 - 1/500.
IHC-P		1/100 - 1/1000.

Target

Function

The small GTPases Rab are key regulators of intracellular membrane trafficking, from the formation of transport vesicles to their fusion with membranes. Rabs cycle between an inactive GDP-bound form and an active GTP-bound form that is able to recruit to membranes different sets of downstream effectors directly responsible for vesicle formation, movement, tethering and fusion. RAB5A is required for the fusion of plasma membranes and early endosomes (PubMed:10818110, PubMed:14617813, PubMed:16410077, PubMed:15378032). Contributes to the regulation of filopodia extension (PubMed:14978216). Required for the exosomal release of SDCBP, CD63, PDCD6IP and syndecan (PubMed:22660413). Regulates maturation of apoptotic cell-containing phagosomes, probably downstream of DYN2 and PIK3C3.

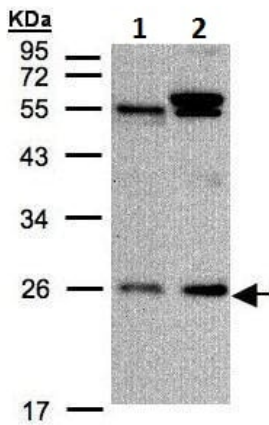
Sequence similarities

Belongs to the small GTPase superfamily. Rab family.

Cellular localization

Cell membrane. Early endosome membrane. Melanosome. Cytoplasmic vesicle. Cell projection, ruffle. Membrane. Cytoplasm, cytosol. Cytoplasmic vesicle, phagosome membrane. Enriched in stage I melanosomes (PubMed:17081065). Alternates between membrane-bound and cytosolic forms (Probable).

Images



Western blot - Anti-Rab5A antibody - C-terminal (ab228770)

All lanes : Anti-Rab5A antibody - C-terminal (ab228770) at 1/1000 dilution

Lane 1 : A431 (human epidermoid carcinoma cell line) whole cell lysate

Lane 2 : Raji (human Burkitt's lymphoma cell line) whole cell lysate

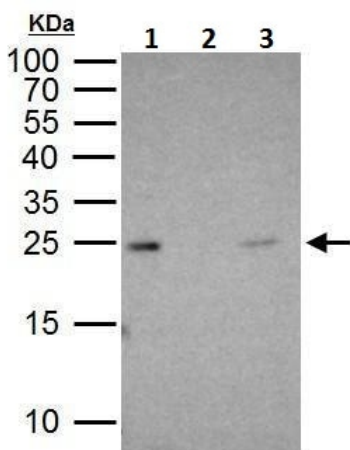
Lysates/proteins at 30 µg per lane.

Secondary

All lanes : HRP-conjugated anti-rabbit IgG

Predicted band size: 24 kDa

12% SDS-PAGE gel.



Immunoprecipitation - Anti-Rab5A antibody - C-terminal (ab228770)

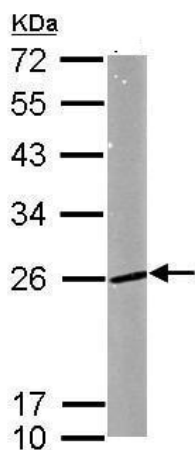
Rab5 was immunoprecipitated from 1 mg of HeLa (human epithelial cell line from cervix adenocarcinoma) whole cell lysate with ab228770. Western blot was performed from the immunoprecipitate using ab228770 at 1/1000 dilution. Anti-rabbit IgG was used as secondary antibody.

Lane 1: HeLa whole cell lysate 30 µg (Input).

Lane 2: Control IP with 2 µg of preimmune rabbit IgG in HeLa whole cell lysate.

Lane 3: ab228770 IP in HeLa whole cell lysate.

15% SDS-PAGE gel.



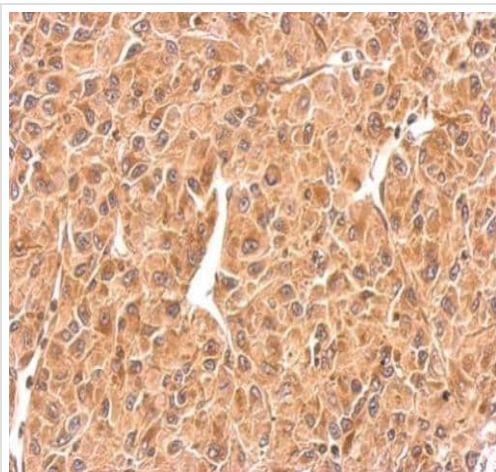
Western blot - Anti-Rab5A antibody - C-terminal (ab228770)

Anti-Rab5A antibody - C-terminal (ab228770) at 1/1000 dilution +
Mouse brain lysate at 50 µg

Secondary

HRP-conjugated anti-rabbit IgG

Predicted band size: 24 kDa



Immunohistochemistry (Formalin/PFA-fixed paraffin-embedded sections) - Anti-Rab5A antibody - C-terminal (ab228770)

Paraffin-embedded U-87 MG (human glioblastoma-astrocytoma epithelial cell line) xenograft stained for Rab5 using ab228770 at 1/500 dilution in immunohistochemical analysis.

Please note: All products are "FOR RESEARCH USE ONLY. NOT FOR USE IN DIAGNOSTIC PROCEDURES"

Our Abpromise to you: Quality guaranteed and expert technical support

- Replacement or refund for products not performing as stated on the datasheet
- Valid for 12 months from date of delivery
- Response to your inquiry within 24 hours
- We provide support in Chinese, English, French, German, Japanese and Spanish
- Extensive multi-media technical resources to help you
- We investigate all quality concerns to ensure our products perform to the highest standards

If the product does not perform as described on this datasheet, we will offer a refund or replacement. For full details of the Abpromise, please visit <https://www.abcam.com/abpromise> or contact our technical team.

Terms and conditions

- Guarantee only valid for products bought direct from Abcam or one of our authorized distributors