




Anti-RACK1 antibody ab166796

[1 References](#) [2 Images](#)

Overview

Product name	Anti-RACK1 antibody
Description	Goat polyclonal to RACK1
Host species	Goat
Tested applications	Suitable for: WB, IHC-P
Species reactivity	Reacts with: Human Predicted to work with: Rabbit, Horse, Chicken, Hamster, Cow, Dog, Pig, Monkey, Gorilla 
Immunogen	Synthetic peptide corresponding to internal sequence amino acids 133-147 of Human RACK1 (NP_006089.1).  Run BLAST with Expasy  Run BLAST with NCBI
Positive control	Human Small Intestine tissue; Human Lymph Node lysate; Mouse and Rat Spleen lysates.
General notes	<p>The Life Science industry has been in the grips of a reproducibility crisis for a number of years. Abcam is leading the way in addressing this with our range of recombinant monoclonal antibodies and knockout edited cell lines for gold-standard validation. Please check that this product meets your needs before purchasing.</p> <p>If you have any questions, special requirements or concerns, please send us an inquiry and/or contact our Support team ahead of purchase. Recommended alternatives for this product can be found below, along with publications, customer reviews and Q&As</p>

Properties

Form	Liquid
Storage instructions	Shipped at 4°C. Upon delivery aliquot and store at -20°C. Avoid freeze / thaw cycles.
Storage buffer	pH: 7.30 Preservative: 0.02% Sodium azide Constituents: 99% Tris buffered saline, 0.5% BSA
Purity	Immunogen affinity purified
Clonality	Polyclonal
Isotype	IgG

Applications

The Abpromise guarantee

Our **Abpromise guarantee** covers the use of ab166796 in the following tested applications.

The application notes include recommended starting dilutions; optimal dilutions/concentrations should be determined by the end user.

Application	Abreviews	Notes
WB		Use a concentration of 0.1 - 0.3 µg/ml. Detects a band of approximately 33 kDa (predicted molecular weight: 35 kDa).
IHC-P		Use a concentration of 3.75 µg/ml.

Target

Function

Seems to bind protein kinase C acting as an intracellular receptor to anchor the activated PKC to the cytoskeleton. May be involved in up-regulation of the activity of kinases such as PKC via binding to KRT1. Together with KRT1 and ITGB1, serves as a platform for SRC activation or inactivation. May play an important role in the developing brain and neuronal differentiation.

Sequence similarities

Belongs to the WD repeat G protein beta family.
Contains 7 WD repeats.

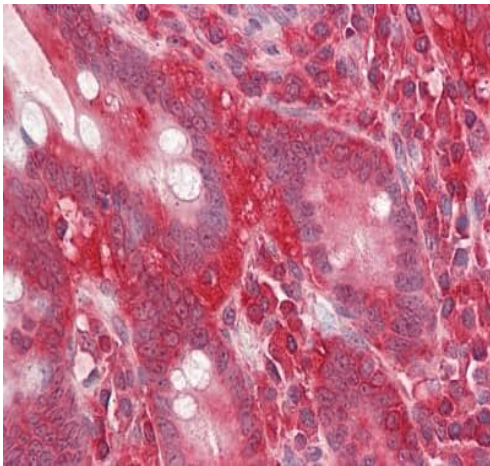
Domain

The WD repeats domain 5 mediates interaction with TRIM63.

Cellular localization

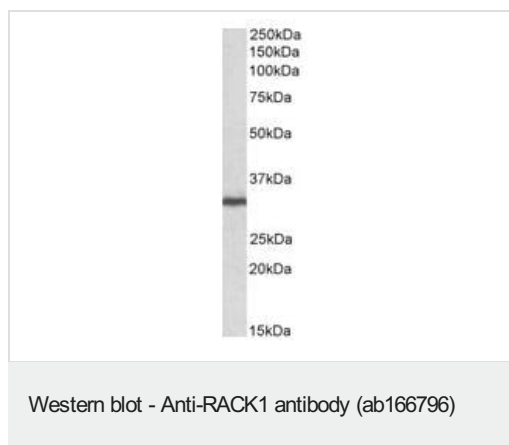
Cell membrane. Located on plasma membrane of neuroblastoma NMB7 cells.

Images



Immunohistochemical analysis of formalin-fixed, paraffin-embedded Human small intestine tissue labeling RACK1 with ab166796 at 3.75 µg/ml.

Immunohistochemistry (Formalin/PFA-fixed paraffin-embedded sections) - Anti-RACK1 antibody (ab166796)



Anti-RACK1 antibody (ab166796) at 0.1 µg/ml + Human Lymph
Node lysate (in RIPA buffer) at 35 µg

Developed using the ECL technique.

Predicted band size: 35 kDa

Observed band size: 33 kDa

Primary incubation: 1 hour.

Please note: All products are "FOR RESEARCH USE ONLY. NOT FOR USE IN DIAGNOSTIC PROCEDURES"

Our Abpromise to you: Quality guaranteed and expert technical support

- Replacement or refund for products not performing as stated on the datasheet
- Valid for 12 months from date of delivery
- Response to your inquiry within 24 hours
- We provide support in Chinese, English, French, German, Japanese and Spanish
- Extensive multi-media technical resources to help you
- We investigate all quality concerns to ensure our products perform to the highest standards

If the product does not perform as described on this datasheet, we will offer a refund or replacement. For full details of the Abpromise, please visit <https://www.abcam.com/abpromise> or contact our technical team.

Terms and conditions

- Guarantee only valid for products bought direct from Abcam or one of our authorized distributors