


Anti-Rad1 antibody ab168397

2 Images

Overview

Product name	Anti-Rad1 antibody
Description	Mouse polyclonal to Rad1
Host species	Mouse
Tested applications	Suitable for: WB, ICC/IF
Species reactivity	Reacts with: Human Predicted to work with: Rabbit, Horse, Cow, Dog, Pig, Chimpanzee, Rhesus monkey, Chinese hamster, Orangutan 
Immunogen	Recombinant full length protein, corresponding to amino acids 1-282 of Human Rad1 (NP_002844).
Positive control	Rad1 transfected 293T cell line lysate, HeLa cells
General notes	<p>The Life Science industry has been in the grips of a reproducibility crisis for a number of years. Abcam is leading the way in addressing this with our range of recombinant monoclonal antibodies and knockout edited cell lines for gold-standard validation. Please check that this product meets your needs before purchasing.</p> <p>If you have any questions, special requirements or concerns, please send us an inquiry and/or contact our Support team ahead of purchase. Recommended alternatives for this product can be found below, along with publications, customer reviews and Q&As</p>

Properties

Form	Liquid
Storage instructions	Shipped at 4°C. Store at +4°C short term (1-2 weeks). Upon delivery aliquot. Store at -20°C long term.
Storage buffer	pH: 7.4 Constituent: 99% PBS
Purity	Protein A purified
Clonality	Polyclonal
Isotype	IgG

Applications

The Abpromise guarantee

Our **Abpromise guarantee** covers the use of ab168397 in the following tested applications.

The application notes include recommended starting dilutions; optimal dilutions/concentrations should be determined by the end user.

Application	Abreviews	Notes
WB		Use a concentration of 1 µg/ml. Predicted molecular weight: 32 kDa.
ICC/IF		Use a concentration of 10 µg/ml.

Target

Function

Component of the 9-1-1 cell-cycle checkpoint response complex that plays a major role in DNA repair. The 9-1-1 complex is recruited to DNA lesion upon damage by the RAD17-replication factor C (RFC) clamp loader complex. Acts then as a sliding clamp platform on DNA for several proteins involved in long-patch base excision repair (LP-BER). The 9-1-1 complex stimulates DNA polymerase beta (POLB) activity by increasing its affinity for the 3'-OH end of the primer-template and stabilizes POLB to those sites where LP-BER proceeds; endonuclease FEN1 cleavage activity on substrates with double, nick, or gap flaps of distinct sequences and lengths; and DNA ligase I (LIG1) on long-patch base excision repair substrates. Isoform 1 possesses 3'->5' double stranded DNA exonuclease activity.

Tissue specificity

Expressed in testis, uterus, bladder, spleen, ovaries, lung, brain and muscle (at protein level).

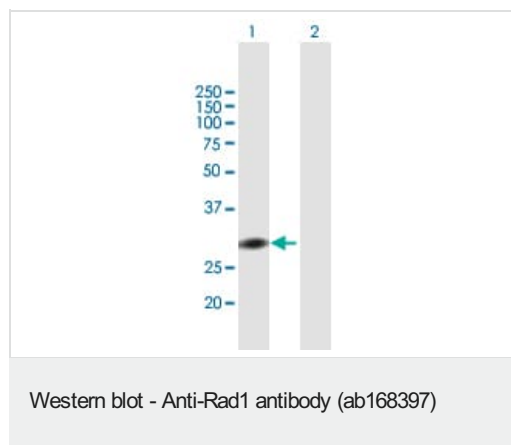
Sequence similarities

Belongs to the rad1 family.

Cellular localization

Nucleus.

Images

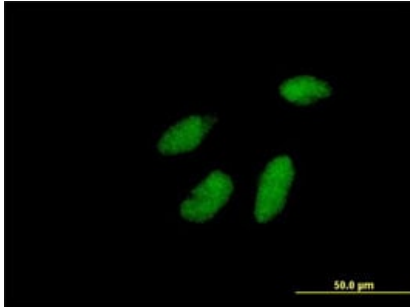


All lanes : Anti-Rad1 antibody (ab168397) at 1 µg/ml

Lane 1 : Rad1 transfected 293T cell line lysate

Lane 2 : Non-transfected 293T cell line lysate

Predicted band size: 32 kDa



Immunofluorescent analysis of HeLa cells labeling Rad1 with ab168397 at 10 µg/ml.

Immunocytochemistry/ Immunofluorescence - Anti-Rad1 antibody (ab168397)

Please note: All products are "FOR RESEARCH USE ONLY. NOT FOR USE IN DIAGNOSTIC PROCEDURES"

Our Abpromise to you: Quality guaranteed and expert technical support

- Replacement or refund for products not performing as stated on the datasheet
- Valid for 12 months from date of delivery
- Response to your inquiry within 24 hours
- We provide support in Chinese, English, French, German, Japanese and Spanish
- Extensive multi-media technical resources to help you
- We investigate all quality concerns to ensure our products perform to the highest standards

If the product does not perform as described on this datasheet, we will offer a refund or replacement. For full details of the Abpromise, please visit <https://www.abcam.com/abpromise> or contact our technical team.

Terms and conditions

- Guarantee only valid for products bought direct from Abcam or one of our authorized distributors