

Product datasheet

Anti-RAP1A antibody [EP878] ab124963

RabMAb

1 Image

Overview

| | |
|----------------------------|--|
| Product name | Anti-RAP1A antibody [EP878] |
| Description | Rabbit monoclonal [EP878] to RAP1A |
| Host species | Rabbit |
| Tested applications | Suitable for: WB Unsuitable for: Flow Cyt, ICC/IF, IHC-P or IP |
| Species reactivity | Reacts with: Mouse, Rat, Human |
| Immunogen | Synthetic peptide. This information is proprietary to Abcam and/or its suppliers. |
| Positive control | Human brain, BXPc 3, C6, and NIH 3T3 cell lysates. |
| General notes | <p>Our RabMAb[®] technology is a patented hybridoma-based technology for making rabbit monoclonal antibodies. For details on our patents, please refer to RabMAb[®] patents.</p> <p>The Life Science industry has been in the grips of a reproducibility crisis for a number of years. Abcam is leading the way in addressing this with our range of recombinant monoclonal antibodies and knockout edited cell lines for gold-standard validation. Please check that this product meets your needs before purchasing.</p> <p>If you have any questions, special requirements or concerns, please send us an inquiry and/or contact our Support team ahead of purchase. Recommended alternatives for this product can be found below, along with publications, customer reviews and Q&As</p> |

Properties

| | |
|-----------------------------|---|
| Form | Liquid |
| Storage instructions | Shipped at 4°C. Upon delivery aliquot and store at -20°C. Avoid repeated freeze / thaw cycles. |
| Storage buffer | pH: 7.2 Preservative: 0.05% Sodium azide Constituents: 0.1% BSA, 40% Glycerol (glycerin, glycerine), 9.85% Tris glycine, 50% Tissue culture supernatant |
| Purity | Tissue culture supernatant |
| Clonality | Monoclonal |
| Clone number | EP878 |

IsotypeIgG

Applications

The Abpromise guarantee Our **Abpromise guarantee** covers the use of ab124963 in the following tested applications. The application notes include recommended starting dilutions; optimal dilutions/concentrations should be determined by the end user.

| Application | Abreviews | Notes |
|-------------|-----------|--|
| WB | | 1/1000 - 1/10000. Detects a band of approximately 21 kDa (predicted molecular weight: 21 kDa). |

Application notes Is unsuitable for Flow Cyt,ICC/IF,IHC-P or IP.

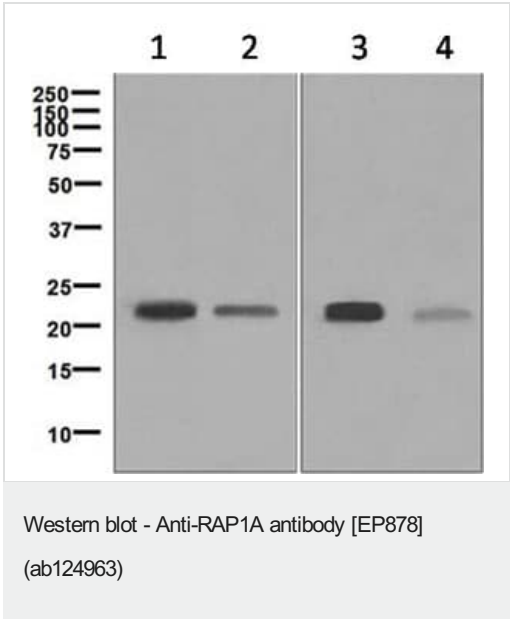
Target

Function Induces morphological reversion of a cell line transformed by a Ras oncogene. Counteracts the mitogenic function of Ras, at least partly because it can interact with Ras GAPs and RAF in a competitive manner.

Sequence similarities Belongs to the small GTPase superfamily. Ras family.

Cellular localization Cell membrane.

Images



All lanes : Anti-RAP1A antibody [EP878] (ab124963) at 1/1000 dilution

Lane 1 : Human brain cell lysates

Lane 2 : BXPC 3 cell lysates

Lane 3 : C6 cell lysates

Lane 4 : NIH 3T3 cell lysates

Lysates/proteins at 10 µg per lane.

Secondary

All lanes : HRP labelled goat anti-rabbit at 1/2000 dilution

Predicted band size: 21 kDa

Please note: All products are "FOR RESEARCH USE ONLY. NOT FOR USE IN DIAGNOSTIC PROCEDURES"

Our Abpromise to you: Quality guaranteed and expert technical support

- Replacement or refund for products not performing as stated on the datasheet
- Valid for 12 months from date of delivery
- Response to your inquiry within 24 hours
- We provide support in Chinese, English, French, German, Japanese and Spanish
- Extensive multi-media technical resources to help you
- We investigate all quality concerns to ensure our products perform to the highest standards

If the product does not perform as described on this datasheet, we will offer a refund or replacement. For full details of the Abpromise, please visit <https://www.abcam.com/abpromise> or contact our technical team.

Terms and conditions

- Guarantee only valid for products bought direct from Abcam or one of our authorized distributors