

Anti-Ras antibody ab196630

★★★★★ [8 Abreviews](#) [1 References](#) [6 Images](#)

Overview

Product name	Anti-Ras antibody
Description	Rabbit polyclonal to Ras
Host species	Rabbit
Specificity	The antibody detects endogenous level of total RAS protein. The immunogen shares 90.5 % of identity with HRAS and NRAS.
Tested applications	Suitable for: WB, IHC-P, ICC/IF
Species reactivity	Reacts with: Mouse, Rat, Human
Immunogen	Recombinant fragment corresponding to Human Ras aa 1-100 (N terminal). Database link: P01116
Positive control	WB: L929 cells, rat muscle, 293 cells IHC: mouse kidney, mouse testis ICC/IF: HeLa cells, NIH/3T3 cells
General notes	<p>The Life Science industry has been in the grips of a reproducibility crisis for a number of years. Abcam is leading the way in addressing this with our range of recombinant monoclonal antibodies and knockout edited cell lines for gold-standard validation. Please check that this product meets your needs before purchasing.</p> <p>If you have any questions, special requirements or concerns, please send us an inquiry and/or contact our Support team ahead of purchase. Recommended alternatives for this product can be found below, along with publications, customer reviews and Q&As</p>

Properties

Form	Liquid
Storage instructions	Shipped at 4°C. Store at +4°C short term (1-2 weeks). Upon delivery aliquot. Store at -20°C long term. Avoid freeze / thaw cycle.
Storage buffer	<p>pH: 7.40</p> <p>Preservative: 0.02% Sodium azide</p> <p>Constituents: 49% PBS, 50% Glycerol (glycerin, glycerine), 0.87% Sodium chloride</p> <p>(without Mg²⁺ and Ca²⁺)</p>
Purity	Immunogen affinity purified
Clonality	Polyclonal

Isotype

IgG

Applications

The Abpromise guarantee

Our **Abpromise guarantee** covers the use of ab196630 in the following tested applications.

The application notes include recommended starting dilutions; optimal dilutions/concentrations should be determined by the end user.

Application	Abreviews	Notes
WB	★★★★★ (5)	1/500 - 1/1000. Predicted molecular weight: 21 kDa.
IHC-P		1/50 - 1/200.
ICC/IF		1/50 - 1/200.

Target

Function

Ras proteins bind GDP/GTP and possess intrinsic GTPase activity.

Involvement in disease

Defects in HRAS are the cause of faciocutaneoskeletal syndrome (FCSS) [MIM:218040]. A rare condition characterized by prenatally increased growth, postnatal growth deficiency, mental retardation, distinctive facial appearance, cardiovascular abnormalities (typically pulmonic stenosis, hypertrophic cardiomyopathy and/or atrial tachycardia), tumor predisposition, skin and musculoskeletal abnormalities.

Defects in HRAS are the cause of congenital myopathy with excess of muscle spindles (CMEMS) [MIM:218040]. CMEMS is a variant of Costello syndrome.

Defects in HRAS may be a cause of susceptibility to Hurthle cell thyroid carcinoma (HCTC) [MIM:607464]. Hurthle cell thyroid carcinoma accounts for approximately 3% of all thyroid cancers. Although they are classified as variants of follicular neoplasms, they are more often multifocal and somewhat more aggressive and are less likely to take up iodine than are other follicular neoplasms.

Note=Mutations which change positions 12, 13 or 61 activate the potential of HRAS to transform cultured cells and are implicated in a variety of human tumors.

Defects in HRAS are a cause of susceptibility to bladder cancer (BLC) [MIM:109800]. A malignancy originating in tissues of the urinary bladder. It often presents with multiple tumors appearing at different times and at different sites in the bladder. Most bladder cancers are transitional cell carcinomas. They begin in cells that normally make up the inner lining of the bladder. Other types of bladder cancer include squamous cell carcinoma (cancer that begins in thin, flat cells) and adenocarcinoma (cancer that begins in cells that make and release mucus and other fluids). Bladder cancer is a complex disorder with both genetic and environmental influences.

Note=Defects in HRAS are the cause of oral squamous cell carcinoma (OSCC).

Sequence similarities

Belongs to the small GTPase superfamily. Ras family.

Post-translational modifications

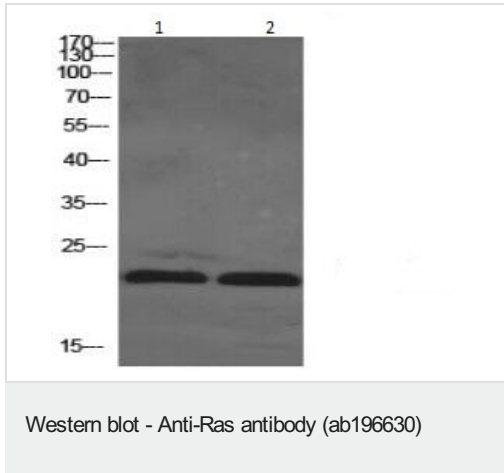
Palmitoylated by the ZDHHC9-GOLGA7 complex. A continuous cycle of de- and re-palmitoylation regulates rapid exchange between plasma membrane and Golgi.

S-nitrosylated; critical for redox regulation. Important for stimulating guanine nucleotide exchange. No structural perturbation on nitrosylation.

Cellular localization

Cell membrane. Golgi apparatus membrane. The active GTP-bound form is localized most strongly to membranes than the inactive GDP-bound form (By similarity). Shuttles between the

Images



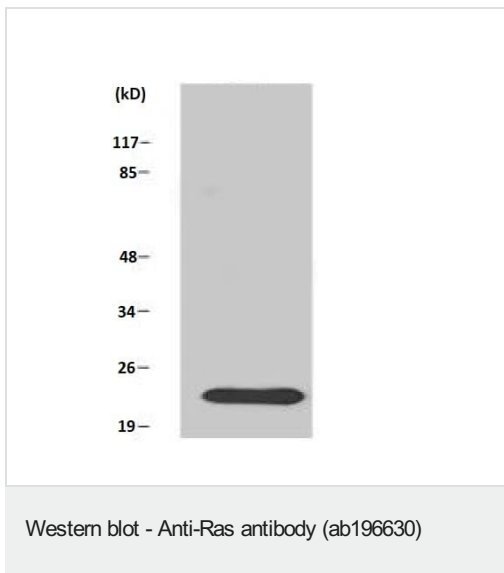
All lanes : Anti-Ras antibody (ab196630) at 1/1000 dilution

Lane 1 : Mouse L929 cells

Lane 2 : Rat muscle cells

Predicted band size: 21 kDa

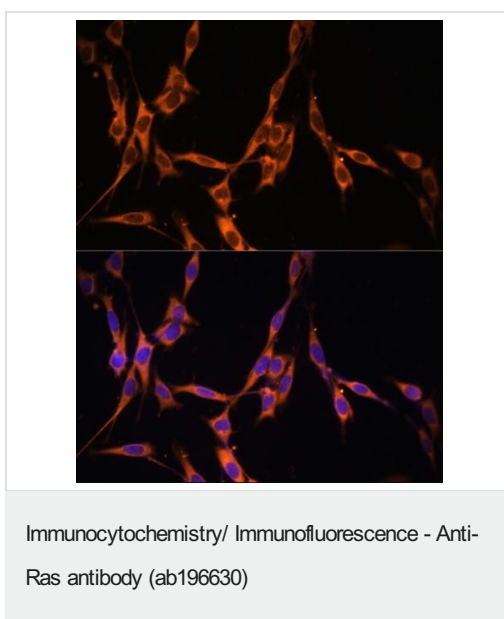
Observed band size: 21 kDa



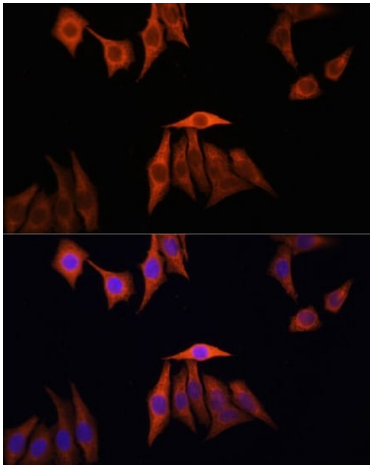
Anti-Ras antibody (ab196630) at 1/1000 dilution + Human 293 cells

Predicted band size: 21 kDa

Observed band size: 21 kDa

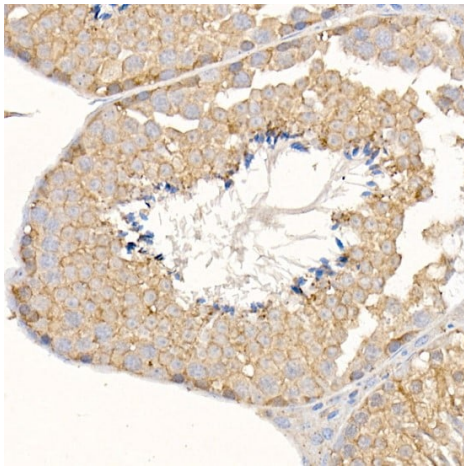


Immunofluorescence analysis of mouse NIH/3T3 cells using ab196630.



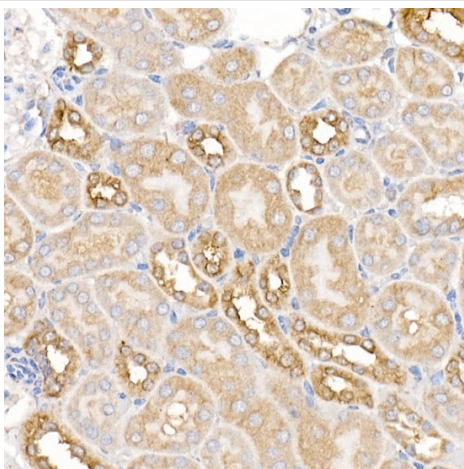
Immunofluorescence analysis of human HeLa cells using ab196630

Immunocytochemistry/ Immunofluorescence - Anti-Ras antibody (ab196630)



Immunohistochemistry of paraffin-embedded mouse testis using ab196630.

Immunohistochemistry (Formalin/PFA-fixed paraffin-embedded sections) - Anti-Ras antibody (ab196630)



Immunohistochemistry of paraffin-embedded mouse kidney using ab196630

Immunohistochemistry (Formalin/PFA-fixed paraffin-embedded sections) - Anti-Ras antibody (ab196630)

Please note: All products are "FOR RESEARCH USE ONLY. NOT FOR USE IN DIAGNOSTIC PROCEDURES"

Our Abpromise to you: Quality guaranteed and expert technical support

- Replacement or refund for products not performing as stated on the datasheet
- Valid for 12 months from date of delivery
- Response to your inquiry within 24 hours
- We provide support in Chinese, English, French, German, Japanese and Spanish
- Extensive multi-media technical resources to help you
- We investigate all quality concerns to ensure our products perform to the highest standards

If the product does not perform as described on this datasheet, we will offer a refund or replacement. For full details of the Abpromise, please visit <https://www.abcam.com/abpromise> or contact our technical team.

Terms and conditions

- Guarantee only valid for products bought direct from Abcam or one of our authorized distributors