

Product datasheet

Rat IgG2 α , kappa monoclonal [RTK2758] - Isotype Control ab18450

[12 References](#) [1 Image](#)

Overview

Product name	Rat IgG2 α , kappa monoclonal [RTK2758] - Isotype Control
Conjugation notes	Please note that this antibody is unconjugated.
Tested applications	Suitable for: ICC/IF, Flow Cyt, IP, WB, IHC-P, IHC-Fr
Immunogen	Trinitrophenol + KLH
General notes	<p>ab18450 RTK2758 immunoglobulin reacts with KLH. The RTK2758 immunoglobulin was chosen as an isotype control after screening on a variety of resting, activated, live, and fixed mouse and human tissues. RTK2758 immunoglobulin is useful as an isotype-matched control in Western blotting, immunoprecipitation, immunohistochemical staining, bioassay and immunofluorescent staining (surface or intracellular) for flow cytometric analysis.</p> <p>The Life Science industry has been in the grips of a reproducibility crisis for a number of years. Abcam is leading the way in addressing this with our range of recombinant monoclonal antibodies and knockout edited cell lines for gold-standard validation. Please check that this product meets your needs before purchasing.</p> <p>If you have any questions, special requirements or concerns, please send us an inquiry and/or contact our Support team ahead of purchase. Recommended alternatives for this product can be found below, along with publications, customer reviews and Q&As</p>

Properties

Form	Liquid
Storage instructions	Shipped at 4°C. Store at +4°C. Do Not Freeze.
Storage buffer	<p>pH: 7.20</p> <p>Preservative: 0.09% Sodium azide</p> <p>Constituent: PBS</p> <p>0.2 μm filter sterilized</p>
Purity	Immunogen affinity purified
Purification notes	The immunoglobulin was purified by affinity chromatography.
Isotype control notes	ab18450 RTK2758 immunoglobulin reacts with KLH. The RTK2758 immunoglobulin was chosen

as an isotype control after screening on a variety of resting, activated, live, and fixed mouse and human tissues. RTK2758 immunoglobulin is useful as an isotype-matched control in Western blotting, immunoprecipitation, immunohistochemical staining, bioassay and immunofluorescent staining (surface or intracellular) for flow cytometric analysis.

Clonality	Monoclonal
Clone number	RTK2758
Isotype	IgG2a
Light chain type	kappa

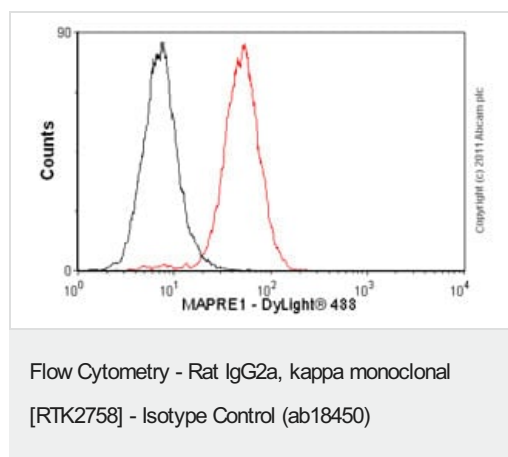
Applications

The Abpromise guarantee Our **Abpromise guarantee** covers the use of ab18450 in the following tested applications.

The application notes include recommended starting dilutions; optimal dilutions/concentrations should be determined by the end user.

Application	Abreviews	Notes
ICC/IF		Use at an assay dependent concentration.
Flow Cyt		Use 2µg for 10 ⁶ cells. ab18450 is a negative isotype control.
IP		Use at an assay dependent concentration.
WB		Use at an assay dependent concentration.
IHC-P		Use at an assay dependent concentration.
IHC-Fr		Use at an assay dependent concentration.

Images



Overlay histogram showing HeLa cells stained with **ab53358** (red line). The cells were fixed with 4% paraformaldehyde (10 min) and then permeabilized with 0.1% PBS-Tween for 20 min. The cells were then incubated in 1x PBS / 10% normal goat serum / 0.3M glycine to block non-specific protein-protein interactions. The cells were then incubated with the antibody (**ab53358**, 1µg/1x10⁶ cells) for 30 min at 22°C. The secondary antibody used was DyLight[®] 488 goat anti-rat IgG (H+L) (**ab98386**) at 1/500 dilution for 30 min at 22°C. Isotype control antibody (black line) was rat IgG2a, kappa monoclonal [aRTK2758] (ab18450, 2µg/1x10⁶ cells) used under the same conditions. Acquisition of >5,000 events was performed. This antibody gave a positive signal in HeLa cells fixed with 80% methanol (5 min)/permeabilized in 0.1% PBS-Tween used under the same conditions.

Please note: All products are "FOR RESEARCH USE ONLY. NOT FOR USE IN DIAGNOSTIC PROCEDURES"

Our Abpromise to you: Quality guaranteed and expert technical support

- Replacement or refund for products not performing as stated on the datasheet
- Valid for 12 months from date of delivery
- Response to your inquiry within 24 hours

- We provide support in Chinese, English, French, German, Japanese and Spanish
- Extensive multi-media technical resources to help you
- We investigate all quality concerns to ensure our products perform to the highest standards

If the product does not perform as described on this datasheet, we will offer a refund or replacement. For full details of the Abpromise, please visit <https://www.abcam.com/abpromise> or contact our technical team.

Terms and conditions

- Guarantee only valid for products bought direct from Abcam or one of our authorized distributors