

Anti-RBM22 antibody ab157105

[1 References](#) [2 Images](#)

Overview

Product name	Anti-RBM22 antibody
Description	Rabbit polyclonal to RBM22
Host species	Rabbit
Tested applications	Suitable for: WB, IP
Species reactivity	Reacts with: Mouse, Human Predicted to work with: Rat, Rabbit, Horse, Chicken, Guinea pig, Cow, Dog, Turkey, Pig, Xenopus laevis, Chimpanzee, Zebrafish, Rhesus monkey, Gorilla, Orangutan, Xenopus tropicalis



Immunogen	Synthetic peptide, corresponding to a region within amino acids 175-225 of Human RBM22 (NP_060517.1).
------------------	---

 [Run BLAST with](#) [Expasy](#)  [Run BLAST with](#) [NCBI](#)

Positive control	293T, HeLa, Jurkat and NIH 3T3 whole cell lysates.
-------------------------	--

General notes	<p>The Life Science industry has been in the grips of a reproducibility crisis for a number of years. Abcam is leading the way in addressing this with our range of recombinant monoclonal antibodies and knockout edited cell lines for gold-standard validation. Please check that this product meets your needs before purchasing.</p> <p>If you have any questions, special requirements or concerns, please send us an inquiry and/or contact our Support team ahead of purchase. Recommended alternatives for this product can be found below, along with publications, customer reviews and Q&As</p>
----------------------	---

Properties

Form	Liquid
Storage instructions	Shipped at 4°C. Store at +4°C.
Storage buffer	pH: 7 Preservative: 0.09% Sodium azide Constituent: 99% Tris citrate/phosphate
	pH 7 to 8
Purity	Immunogen affinity purified
Purification notes	ab157105 was affinity purified using an epitope specific to RBM22 immobilized on solid support.

Clonality	Polyclonal
Isotype	IgG

Applications

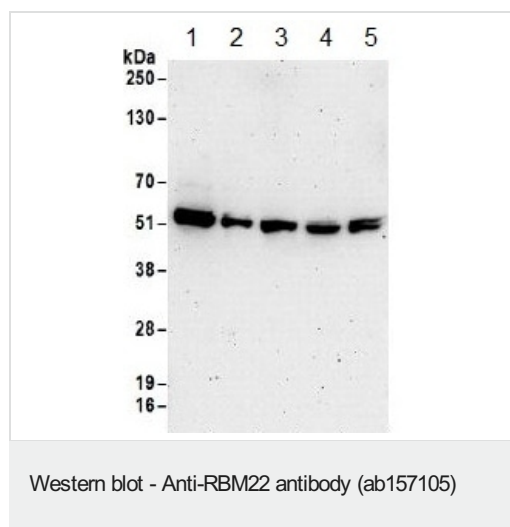
The Abpromise guarantee Our **Abpromise guarantee** covers the use of ab157105 in the following tested applications. The application notes include recommended starting dilutions; optimal dilutions/concentrations should be determined by the end user.

Application	Abreviews	Notes
WB		1/2000 - 1/10000. Predicted molecular weight: 47 kDa.
IP		Use at 2-10 µg/mg of lysate.

Target

Function	Involved in the first step of pre-mRNA splicing. Binds directly to the internal stem-loop (ISL) domain of the U6 snRNA and to the pre-mRNA intron near the 5' splice site during the activation and catalytic phases of the spliceosome cycle. Involved in both translocations of the nuclear SLU7 to the cytoplasm and the cytosolic calcium-binding protein PDCD6 to the nucleus upon cellular stress responses.
Sequence similarities	Belongs to the SLT11 family. Contains 1 C3H1-type zinc finger. Contains 1 RRM (RNA recognition motif) domain.
Domain	The C-terminus RRM domain and the zinc finger motif are necessary for RNA-binding.
Cellular localization	Nucleus. Cytoplasm. Mainly located in the nucleus. Translocated from the nucleus to the cytoplasm after heat shock cell treatment. May be shuttling between the nucleus and the cytosol.

Images



All lanes : Anti-RBM22 antibody (ab157105) at 0.1 µg/ml

Lane 1 : 293T whole cell lysate at 50 µg

Lane 2 : 293T whole cell lysate at 15 µg

Lane 3 : HeLa whole cell lysate at 50 µg

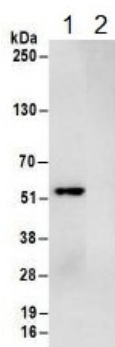
Lane 4 : Jurkat whole cell lysate at 50 µg

Lane 5 : NIH 3T3 whole cell lysate at 50 µg

Developed using the ECL technique.

Predicted band size: 47 kDa

Exposure time: 3 minutes



Immunoprecipitation - Anti-RBM22 antibody
(ab157105)

Detection of RBM22 in Immunoprecipitates of 293T whole cell lysates (1 mg for IP, 20% of IP loaded) using ab157105 at 6 µg/mg lysate for IP (Lane 1). For WB detection an ab157105 was used at 1 µg/ml. Lane 2 represents control IgG IP. Detection: Chemiluminescence with an exposure time of 3 seconds.

Please note: All products are "FOR RESEARCH USE ONLY. NOT FOR USE IN DIAGNOSTIC PROCEDURES"

Our Abpromise to you: Quality guaranteed and expert technical support

- Replacement or refund for products not performing as stated on the datasheet
- Valid for 12 months from date of delivery
- Response to your inquiry within 24 hours
- We provide support in Chinese, English, French, German, Japanese and Spanish
- Extensive multi-media technical resources to help you
- We investigate all quality concerns to ensure our products perform to the highest standards

If the product does not perform as described on this datasheet, we will offer a refund or replacement. For full details of the Abpromise, please visit <https://www.abcam.com/abpromise> or contact our technical team.

Terms and conditions

- Guarantee only valid for products bought direct from Abcam or one of our authorized distributors